



Wabash Valley
COMMUNITY FOUNDATION

2022 Annual Report | Creating Tomorrow



Contents

3	Message to the Community	24	Featured Artists
4	Building for a Better Tomorrow	28	Ways to Give
6	Shaping Community Opportunities	30	Donors
8	Creating a Healthy, Educated & Thriving Community	36	Memorials & Tributes
10	Grants	38	The Legacy Society
18	Scholarships	42	Financial Overview
22	Celebrating 30 Years of Impact	44	Boards & Staff
		46	Committees

In 2022, the Wabash Valley Community Foundation celebrated 30 years of Creating Tomorrow to achieve our vision of a healthy, educated and thriving Wabash Valley. From building endowments to shaping community opportunities, we are thankful for the individuals, families, businesses and organizations that have chosen us as their philanthropic partner. Thank you for all you do to create a better tomorrow for the communities we serve.

Our Mission is to engage people, build resources and enrich lives.

Our Vision is for a healthy, educated and thriving community.

Our Core Values

Integrity

We are honest and ethical in our approach. We value and respect all people and believe that building trust builds a better community.

Accountability

We measure ourselves against the highest standards of philanthropy, stewardship and fiscal responsibility.

Collaboration

We work strategically in partnership and provide leadership, when needed, to achieve our vision.

Transparency

We communicate, both internally and externally, with candor, honesty and respect.

Message to the Community

Anniversaries are a time to celebrate the past and dream about the future. In preparation for our 30th Anniversary, we went through records, videos, stories and pictures, even reading through transcriptions of interviews dating back to our formation.

As we reflected on the past 30 years, we felt immense gratitude toward the thousands of individuals, families, businesses and organizations that have partnered with us since 1992. Your generosity and commitment to create a better tomorrow have allowed us to impact our communities through our grantmaking and philanthropic services. Thank you.

The Community Foundation's 30th Anniversary year was one of excitement and celebration. However, it was also one of immense sadness. Our friend, mentor and colleague, Sally Zuel, passed away during her tenure as Board President. Sally devoted so much of her life to others and profoundly impacted the many lives she touched. Our community has suffered a great loss.

When we began work this past summer on our 30th Anniversary Annual Report, Sally remarked on how proud she was that the Community Foundation effectively "lived its mission" of engaging people, building resources and enriching lives. She was excited that the Community Foundation had positioned itself for continued growth in the future. More importantly, that the Community Foundation was positioned

to provide meaningful funding for projects, programs and opportunities that strengthen our Clay, Sullivan and Vigo county communities.

The Community Foundation is fortunate to have benefitted from Sally's leadership, as well as the leadership of so many before her. As we gathered information from our early days, when we had more dreams than endowment, we were reminded that our founding president, the late Don Springman, would say, "One day... one day the Wabash Valley Community Foundation will be something." Thirty years later, what a "something" this organization has become.

We are proud of how much we have accomplished together. We, being the Community Foundation, and each of you, our donors, partners, community members, organizations and friends. The Community Foundation is at its best and strongest when we work together, and the past 30 years are an amazing example of that. Whatever role you play or have played in the Community Foundation's legacy of impact in the Wabash Valley, thank you for your support, guidance and friendship.

As we look to the future, we are more determined than ever to work within each of our three counties to find innovative and effective solutions for some of our most challenging opportunities. Just as 30 years ago, when Lilly Endowment inspired our founding volunteers, every volunteer and staff member since has been inspired to respond to community needs and remains committed to Creating Tomorrow. For **good**. For **ever**.®



Santhana Naidu

Vice-President

Wabash Valley Community Foundation



Beth Tevlin

Executive Director

Wabash Valley Community Foundation

Building for a Better Tomorrow

The Community Foundation has spent three decades bringing people and resources together to build a better tomorrow through strategic giving, community leadership, personalized service, local expertise and strong investments.

Three years ago, Lilly Endowment Inc.'s GIFT VII challenged us to take a closer look at the communities we serve, listen to our residents and compile data needed to make better-informed decisions.

In Clay County, we learned that school districting, consolidation, competition and geography created distinct silos of resident interaction. To connect Clay County as vibrant, healthy, family-friendly and prosperous communities, the Community Foundation launched a series of county-wide training institutes made possible through GIFT VII's Implementation Grant. These institutes promoted the assets of local communities and encouraged relationships from residents throughout Clay County.

Throughout 2022, the Community Foundation strengthened its relationship with Clay County residents through the *Community* Builders Institute, a program offered by Rural Community Solutions. The Institute's overarching goal was to help bring people together by promoting small businesses, schools and volunteerism. Community teams were formed for the *Community* Builders Institute, with six tours serving the communities of Poland/Bowling

When people are involved in their community, supportive connections are formed, resulting in thriving and prosperous towns.

Green, Center Point, Staunton, Cory, Brazil and Clay City. As an added incentive, each participating community received a \$5,000 grant at the conclusion of the Institute to be used for the betterment of their community.

At each tour, participants were able to interact more deeply with the people at the heart of their towns, visiting local small businesses unique to their community such as The Farm and

Company in Bowling Green, Exotic Feline Rescue Center in Center Point, Indiana Sheriff's Youth Ranch in Brazil, Butts Dairy Farm in Cory, Farm Connection and Clay City Pottery in Clay City and many others. The business owners shared their passion, heartfelt stories, business models and impact with the participants, helping to enlighten their neighbors.

When people are involved in their community, supportive connections are formed, resulting in thriving and prosperous towns. The Community Foundation and the participants in the *Community* Builders Institute are continuously working together for the betterment of not only the communities in Clay County but for the county and all its individuals, families and neighbors, helping to create a better tomorrow.

The *Community* Builders Institute is open to all residents of Clay County. Anyone with a high interest in volunteerism, philanthropy or even just in their community is encouraged to become a participant in 2023. To learn more, please contact the Community Foundation at **812-232-2234**.



The Farm & Co. | Bowling Green, IN



Honeysuckle Hill Bee-stro | Brazil, IN



White Pine Manor | Brazil, IN



Exotic Feline Rescue Center | Center Point, IN



Wilma & Liston Buell Center | Clay City, IN

Grantees of the 2022 Clay County Community Builders Institute

Poland/Bowling Green is using its grant to add public Wi-Fi to help attract young millennial families to the community.

Center Point is waiting to decide based on the needs of their community in the coming year.

Staunton is using its grant to purchase new chairs and build flower boxes at the Staunton Community Center.

Cory will use its grant to refurbish and upgrade a local playground and add lighting to numerous parks and downtown.

Brazil is using its grant to repair and tint windows at the Clay County Historical Society, helping to preserve the collections from sunlight.

Clay City is using its grant to help fund a mural through the Clay City USA Foundation.

Shaping Community Opportunities

Your generosity helps the Community Foundation support and sustain our community's nonprofit organizations whose missions enhance the quality of life in the Wabash Valley. Thanks to you, we are shaping community opportunities now and for generations to come.

Sporting an Impact

Since 2008, the Sullivan County Youth Sports Complex (SCYSC) has provided the Sullivan County community with safe, fun and engaging youth sports. Serving over 1,200 children and their families each year, SCYSC hosts a variety of events for baseball, football, softball, soccer and cheerleading.

With more than 34 acres and nine sports fields, the ever-growing SCYSC sought a way to expand that would provide its families with a safe experience while positively impacting the entire Sullivan County community. Volunteers determined the addition of a 1.5-acre parking lot would allow the SCYSC to continue to host recreational sports leagues and, as demand grows, host travel teams and create new tournament opportunities. The parking lot project would provide a safe and viable option for families while also impacting recreation and tourism by bringing visitors to Sullivan County.

As youth sports provide an opportunity for children to learn teamwork and cooperation while supporting a healthy, active lifestyle, Community Foundation awarded the SCYSC a grant of \$20,000 to assist in the creation of 225 parking spaces. This new addition to the SCYSC has helped make youth sports in Sullivan County more accessible, creating a healthier, stronger tomorrow.



Visitors utilize the newly created parking lot at the Sullivan County Youth Sports Complex (SCYSC)

Making a Splash in Sullivan

In the early 1960s, Sullivan set its sights on the idea of constructing a public pool for its residents. With a goal of completion by 1963, the County and City began work on what would soon become one of Sullivan County's most popular spots. When the pool opened on schedule in July 1963, it quickly became a hot spot for all. Unfortunately, its enhanced popularity resulted in excessive wear and tear from use, requiring the pool to be shut down in 2018.

Prior to its closing, the City Pool had minimal equipment to adapt to the changing needs of the community. With rising costs and the onset of the COVID-19 pandemic, city officials could have elected to permanently close the pool. However, they chose to optimize this opportunity and give back to its citizens in a way that enhances their experience and overall quality of life.

After months of planning, city officials unveiled its plans to add a new water slide, AstroTurf, event space, a larger pool with varying depths, shaded cabanas and seating, a kiddie pool with interactive water features, a café and a lily pad walk. These additions promote physical activity for all ages in a fun and inviting way while fostering a healthy environment for the community.

To assist in the creation of the lily pad rope walk, the Community Foundation awarded a \$50,000 grant to the City of Sullivan. This attraction already enhanced the lives of the families who visited during the City Pool's soft opening in 2022. Children spent the summer testing their strength and agility by jumping or climbing from lily pad to lily pad, making a big splash!



Children enjoyed the lily pad walk at the Sullivan City pool

Revitalizing Community in Shelburn

The Town of Shelburn has spent the past several years working toward revitalizing its downtown area. Though a significant amount of work has been completed, there is still much to be done to bring about the best quality of life for its citizens.

Shelburn's Community Building is a favorite spot for people in the community, as well as a strong, multi-purpose asset for Shelburn's effort to boost tourism. Not only does it provide ample space to host receptions, conferences, meetings, parties and more, it is also home to the Shelburn Police Department, public library and Senior Citizens Center.

In recent years, the Community Building's structure suffered damage due to natural weathering and excessive use, leaving it in dire need of renovation. The Community Foundation awarded a \$25,000 grant to the Town of Shelburn to assist with repairs and renovations. This past year, the work was completed, allowing the Town of Shelburn to serve as a host for participants of the Sullivan County Community Builders Institute.



Institute participants listen to a presentation at Shelburn's Community Building

Creating a Healthy, Educated & Thriving Community

Healthy

Wabash Valley Crew was formed in June of 2016 to encourage Vigo County youth to participate in rowing. In the years since its formation, Wabash Valley Crew has expanded to include youth from surrounding counties, as well as students from Indiana State University, Rose-Hulman Institute of Technology and Saint Mary-of-the-Woods College. The organization has also collaborated with the YMCA of the Wabash Valley and Vigo County School Corporation to offer additional programs to benefit residents of all ages.

Through this collaborative effort in the community, Wabash Valley Crew hopes to see opportunities unfold not only in rowing but in other water sports such as kayaking and canoeing. With a proper infrastructure, such as a boathouse, Wabash Valley Crew could easily see 50-150 participants per event enjoying the services of Fairbanks Park.

The Community Foundation Board realized the creation of a boathouse could impact community and economic growth, youth, riverfront development, tourism, beautification, and health and wellness. Based on this potential, the Board voted to issue a \$150,000 challenge grant as a kickoff to the Community Foundation's 30th Anniversary celebrations.

It is up to the community to help meet the match. From now until December 31, 2023, for every \$1 donated by the general public, Wabash Valley Crew will receive \$1 from the Community Foundation, up to \$150,000.



Members of Wabash Valley Crew row along the Wabash River

Photo courtesy of Brendan Kearns



TO LEARN MORE,
SCAN HERE

Educated

As Indiana's community college, Ivy Tech seeks to provide workforce solutions that enhance the state's economy. The College is uniquely qualified to fulfill the workforce needs of West Central Indiana's healthcare industry as the largest, singly accredited community college in the nation and Indiana's largest post-secondary institution.

In response to the shortage of healthcare professionals in West Central Indiana, Ivy Tech Terre Haute developed a multi-phased approach to renovate its spaces for the School of Health Sciences. The College expanded the Paramedic Science footprint from 1,337 square feet to 2,053 square feet, a nearly 54% increase in square footage. Similarly, the renovation increased the Respiratory Therapy lab space from 2,033 square feet to 2,613 square feet, a nearly 30% increase in square footage. As a result, both programs now have the ability to conduct lecture and lab classes simultaneously, allowing both programs to enhance their course scheduling. The modern classrooms and labs also provide opportunities to create simulated experiences in the patient care setting, enabling a seamless transition from Ivy Tech to the workforce.

To assist with the phased renovations, the Community Foundation provided a \$50,000 grant payable over two years, enabling both programs to more effectively communicate the program to prospective students, enhance student experiences and address the workforce gap in Paramedic Sciences and Respiratory Therapy. Both programs began the Fall 2022 semester in the newly renovated areas. The impact of this investment is anticipated to have a long-term effect on the enrollment, retention and successful graduation of students in both Paramedic Science and Respiratory Therapy, helping to create an educated community.



Ivy Tech Terre Haute

Thriving

Happiness Bag is an independent nonprofit organization providing services to friends with disabilities across the Wabash Valley. Created in 1972, the organization began as a theater group of Indiana State University students and has since evolved into programs to support those with physical and/or intellectual disabilities. Serving ages three and older, Happiness Bag provides Adult Day Programs, Resident Habilitation, Respite Care Program, Summer Day Camp, Participant Assistance & Care (PAC) Services, DHI Individual and Group: Community Based Habilitation, music therapy and wellness coordination. The organization also offers recreational sports such as track & field, corn hole, basketball, bowling, aquatics, bocce and cycling.

As the only organization in the Wabash Valley providing education and recreational programs designed for those with disabilities, Happiness Bag has grown from supporting 60 individuals to nearly 300. This vast increase created an immense need for a larger space to accommodate those receiving support, their families and the ever-increasing staff.

To help fund additional facility space, the Community Foundation awarded Happiness Bag with a grant of \$25,000. This expanded facility will allow Happiness Bag to expand its programs, services and staff, increase revenue and allow those it serves to be a part of a happier and thriving community.



Happiness Bag

Grants

The Community Foundation strives to create a better tomorrow by strengthening local nonprofit organizations through program grants. Each year, grants are awarded to improve the quality of life in the Wabash Valley by contributing to the development of each community, addressing community needs and investing in solutions that strengthen and improve our communities.

Community Grant and Field of Interest Funds – \$531,942.00

The Community Foundation recognizes that our pool of community grant and field of interest funds is the engine that drives our competitive and proactive grant processes. These grants are critical to the quality-of-life impact made throughout Clay, Sullivan and Vigo counties in which the funds were established to benefit.

We are pleased to recognize the following community grant funds that have reached a total value of \$1,000,000 or more:

Bentrup Family Endowment Fund
Delmar L. and Betty L. Jones Family Fund
Hulman George Family Endowment Fund
Lilly Endowment Board Designated Fund
Lilly Endowment Fund
Vigo County Community Grant Fund

Clay County Funds

100 Women Who Care Clay County Fund
Albert and Freda Eder DeCoursey Community Fund
Andrew and Mary Anne Murphy Fund
Anna Ferrell Endowment Fund
Beulah Ahlemeyer Memorial Fund
Bill and Edna Ahlemeyer Endowment Fund
Brazil High School Class of 1957 Fund
Brazil Rotary Community Fund
Clay City Lions Community Fund
Clay City Community Recreation Fund
Clay Civic Memorial Foundation Community Fund
Clay County Community Foundation Board Endowment Fund
Clay County Community Grant Fund
Clay County Farm Bureau Endowment Fund
Clyde and Kathryn Bullerdict Memorial Fund
Connley-Hall-Rentschler Fund
Coughanowr Insurance Inc. Endowment Fund
Don and Marian Harrison Endowment Fund

Donald and Norma Nicosin Endowment Fund
Dr. Charles and Susie French Family Fund
Dr. Hal and Muriel Glidden Family Fund
Emry's Generation Fund
Ernest and Mary Yelton Community Fund
Eva's Generation Fund
Fred Nevils Family Fund
Gilbert and Wilmadean Schepper Family Fund
Guy & Anne Tribble Family Fund
Guys Who Give Clay County Endowment Fund
H. Michael Lawson Community Fund
Harley and Thelma Andrews Family Fund
Hendrickson Family Memorial Fund
Herschel and Josephine Morge Endowment Fund
Hostetler Family Fund
Jack and Diane Braden Endowment Fund
Jeffrey A. and J. Shan Bell Memorial Fund
Jeffrey Etling and Dr. Miranda Goodale Endowment Fund
Jim and Alice Romas Endowment Fund

Joe and Betsy Milner Family Endowment Fund
John and Barbara Eder Family Fund
John and Vicki Switzer Community Fund
John E. and Karen E. Mercer Family Endowment Fund
Jon and Sandy Hendrich Endowment Fund
Kathy Knox Memorial Fund
Kenneth and Eleanor Hauser Endowment Fund
Kumpf Family Endowment Fund
L.T. and Janice K. Clark Family Endowment Fund
Larry & Martha Tempel Family Community Fund
Larry and Barbara Nolte Community Fund
Lewis & Eva Berry Endowment Fund
Lilly Endowment Board Designated Fund for Clay County
Lilly Endowment Fund for Clay County
Melvin E., Rosemary and Eugene Nolte Family Memorial Fund
Merle and Louise Crafton Family Endowment Fund

Miller & Stewart, L.L.C., CPA's Clay County Community Fund
 Mr. and Mrs. Fletcher D. Stitzle Endowment Fund
 Norman and Carolyn Keiser Endowment Fund
 Patrick J. Knierim Memorial Fund
 Paul and Rita Harden Family Fund
 Popcorn Festival Committee Fund
 Randy and Cathy Collins Endowment Fund
 Richard and Hila Zimmerman Endowment Fund
 Richard and Sue Lightfoot Endowment Fund
 Richard L. and Mary L. McCullough Family Fund
 Riddell National Bank – John H. Riddell Memorial Fund
 Rolene Moore Fund
 Ronald and Sarah Reagan Family Fund
 Sam J. and Joyce E. Emmert Family Endowment Fund
 Steve and Michelle Bell Fund
 Tom and Lynne Reberger Endowment Fund
 Tommy and Clara Thompson Community Fund
 Traci K. Miller Memorial Fund
 Utilities District of Western Indiana REMC Community Fund
 Virgil and Mary Jo Butts Family Fund
 Wabash Valley Pharmaceutical Society Fund – Clay County
 William and Mary Margaret Kocher Memorial Fund
 William Harshbarger, Sr. and Anna Eder Harshbarger Memorial Fund
 William Robert Huff Memorial Fund
 Youth Grant Committee – Clay County Fund

Sullivan County Funds

100 Women Who Care Sullivan County Fund
 Allomatic Products Community Enrichment Fund
 Bill and Lorene Hankins Endowment Fund
 Black Beauty Sullivan County Community Fund
 Carlisle Community Endowment Fund
 Cemetery Preservation Endowment Fund
 Dana M. Burton Memorial Endowment Fund
 Diane Marheine Memorial Community Fund
 Dick and Janice Knotts Fund
 Don and Nancy Hunt Community Fund
 Dr. Allen and Shirley Lueking Family Fund
 Emil and Janet Page Family Endowment Fund
 First National Bank & Trust Employee Fund
 Garrett Family Fund
 Guy and Wilma Edds Charitable Endowment Fund – Gammie's Closet
 Harold and Malinda Medsker Endowment Fund

Harry J. Stanley Memorial Fund for Children of Sullivan County
 Henry D. Bobe Community Fund
 Hoosier Energy Fund
 JAC Fund
 Jack Krumreich and Ellen Tucker Endowment Fund
 James and Mary Halberstadt Endowment Fund
 JJJ & K Endowment Fund
 Joe & Betty Dukes Family Fund
 John and Yvonne Longfield Endowment Fund
 Jordan and Ally Orwig Endowment Fund
 Judy Halberstadt Harris Endowment Fund
 Judy King Environmental Fund
 Kenneth and Mary Conner Endowment Fund
 Lana Martindale Memorial Fund
 Larry and Janet Hays Endowment Fund
 Larry and Patti Mayfield Family Endowment Fund
 Lilly Endowment Board Designated Fund for Sullivan County
 Lilly Endowment Fund for Sullivan County
 Lloyd and Michele Smith Endowment Fund
 Lois A. Andrews Foundation Fund for Sullivan County
 Lorene B. and Malcolm Pigg Beautification Fund
 Lorene B. and Malcolm Pigg Endowment Fund
 Merom Community Endowment Fund
 Milam Family Endowment Fund
 Milton L. and Ruth Pleasant Kult Fund
 Pigg Family Charitable Giving Fund
 Pigg Implement, Inc. Endowment Fund
 Robert and Susan McCammon Endowment Fund
 Rusty and Margie Hays Endowment Fund
 Sullivan Business & Professional Women's Club Endowment Fund
 Sullivan County Community Foundation Board Endowment Fund
 Sullivan County Community Grant Fund
 Sullivan County Historical Society Fund for Sullivan County
 Sullivan Family Dentistry Fund
 Sullivan Rotary Club Endowment Fund
 Tara and Jason Jenkins Endowment Fund
 Templeton Coal Company, Inc. Fund for Sullivan County
 Tom and Kay Weitekamp Fund
 Unger Family Fund
 William and Joanne Wright Family Endowment Fund
 William Ferd and Connie Pleasant Johnson Memorial Fund
 William Snyder Endowment Fund
 Youth Endowment Fund for Sullivan County

Vigo County Funds

100 Women Who Care Endowment Fund
 100+ Women Who Care Community Fund
 Aiden and Lorene Smith Memorial Endowment Fund
 Allen and Mildred D. Felstein Charitable Endowment Fund
 Alpa Patel and Thomas Yeagley Community Fund
 Altrusa Foundation Fund
 Andres Family Endowment Fund
 Andy and Libby Hendricks Endowment Fund
 Anonymous
 Backpack Endowment Fund
 Baldin E. Kloer Memorial Fund
 Barbara R. Kelley Endowment Fund
Bentrup Family Endowment Fund
 Bill and Marci Gropp Tennis Fund
 Bobby Lee Bennett & Shirley Rosalee Williams Dailey Bennett Fund
 Brighton Family Fund
 C. Don and Gail A. Nattkemper Community Fund
 Carl W. ("Bang") and Josephine M. Price Memorial Fund
 Carol A. & Douglas C. Sloan Community Fund
 Carol M. Starkey Kochell Charitable Fund
 Cary and Paula Sparks Family Fund
 Charles Harlan Fund for the Hull Cemetery
 Chris and Melinda Wall Community Fund
 Cindy F. Readinger Endowment Fund
 Dale and Carla Hendricks Endowment Fund
 David and Becky Doti Family Fund
 David and Joan Zaun Endowment Fund
 David and Luann Bolk Endowment Fund
Delmar L. and Betty L. Jones Family Fund
 Diann and Craig McKee Community Fund
 Don and Nancy Brattain Rogers Community Fund
 Don and Peggy Decker Endowment Fund
 Donald O. Springman Endowment Fund
 Dr. Bruce Philip Anshutz Memorial Fund
 Dr. Paul and Nadine Humphrey Charitable Fund
 Drake Johnson Memorial Fund
 Eifert Family Fund
 Encouraging Access & Success in Education Fund
 Erna L. Cox Community Fund
 Erna L. Cox Educational Fund
 First Financial Bank Community Endowment Fund
 Garrett Pendergast and Stephanie Welsh Community Fund
 Gary and Nancy Faulkner Fund
 Gary W. and Judy A. Schomer Family Endowment Fund

Gene and Wilma J. Eckerty Memorial Fund
 Gershon H & Janice K Loeser Endowment Fund
 Gibson Family Endowment Fund
 Guille and Cindy Cox Endowment Fund
 Guys Who Give Community Fund
 Hartman Brown Fund
 Helping Hand Endowment Fund
 Henry and Geraldine Adelman Memorial Fund
 Herrington Family Endowment Fund
 Hulman George Family Endowment Fund
 J. Scott and Armeen Williams Fund
 Jacqueline H. Phillips Endowment Fund
 James R. Piker, Ada A. Piker & Virginia M. Ginter Memorial Fund
 Janice and Vern Fellows Endowment Fund
 Jeff and Jennifer Perry Fund
 Jerry and Jo Einsteadig Community Fund
 John Tipton Memorial Fund
 Joseph E. and Martha Jean Claretto Endowment Fund
 Joseph H. and Robin E. Chillington Endowment Fund
 Julie McLaughlin Memorial Fund
 Landsbaum Endowment Fund
 Larry P. Fleschner Good Samaritan Fund
 Lavelda M. Goble Endowment Fund
 Leon & Roberta Sackrider Endowment Fund
 Leonard S. "Steve" Arnold Memorial Fund
 Lilly Endowment Board Designated Fund
 Lilly Endowment Fund
 Linda K. Vickers Memorial Fund
 Lukens Family Endowment Fund
 Mae C. and Jack H. Page Endowment Fund
 Mary Ann Conroy and Michael Mueller Endowment Fund
 Medical Heritage Society Fund
 Meis Family Endowment Fund
 MillerWhite Community Endowment Fund
 Morris & Patty Salter and Bill & Melba Fenoglio Memorial Fund
 Mr. and Mrs. Hugh B. Lee, Jr. Endowment Fund
 Myrl and Marie Wilkinson Community Endowment Fund
 O. Earl and Tina Elliott Family Endowment Fund
 Paul M. Stanley Community Fund
 Piker Family Fund
 PMC Fund
 Ray G. Ingram Endowment Fund

Richard C. Vining Community Fund
 Robert and Irene Berlen Endowment Fund
 Robert and Julie Baesler Community Fund
 Robert R. and Dorothy W. Drummond Community Fund
 Rose M. Hill Family Endowment Fund
 Sally Zuel Family Fund
 Salo and Mary Levite Endowment Fund
 Sara Lou & Jack Joelson Fund
 Steve Harris Memorial Endowment Fund
 Susan Decker and Vicki Kosowsky Community Fund
 Templeton Coal Company, Inc. Fund for Vigo County
 Terre Haute Academy of Medicine Endowment Fund
 Terry and Beth Tevlin Community Fund
 The Nation Fund
 Thelma Maxine Dever Memorial Fund
 Thomas and Susan Dinkel Family Fund
 Thomas L. and Connie L. Francis Charitable Endowment Fund
 Tribune-Star Christmas Basket Fund
 Victor and Marian L. Danek Endowment Fund
 Vigo County Community Grant Fund
 Volunteer Action Center Endowment Fund
 Wabash Valley Asphalt Endowment Fund
 Wabash Valley Community Foundation Flood Relief Fund
 Wabash Valley Long Term Disaster Recovery Fund
 Wabash Valley Pharmaceutical Society Fund – Vigo County
 Walter and Katherine Bledsoe Family Endowment Fund
 Wernsing Fund
 White Family Endowment Fund
 William A. Reed, Jr. Memorial Endowment Fund
 Wood Family Fund
 Wright, Shagley & Lowery PC Community Fund

Clay County – \$95,999.00

Brazil Main Street
Downtown Brazil holiday decorations
 \$21,500.00

Clay County 4-H Council
Replace furnace at the 4-H grounds exhibit hall
 \$9,562.00

Clay County Humane Society
Replace specialized HVAC system
 \$25,000.00

Clay County YMCA
Electronic sign
 \$11,500.00

Town of Center Point
Center Point Community Park equipment upgrades
 \$18,000.00

Wreath, Inc.
Playground expansion
 \$10,437.00

Sullivan County – \$83,723.00

Carlisle Lions Community Ambulance Service, Inc.
Motorized lift
 \$20,000.00

Heart of Sullivan
ADA ramp and updates to equipment at Sullivan City Park
 \$15,000.00

Humane Society of Sullivan County
Drainage of the facility's outdoor area which had become flood-prone due to neighboring construction
 \$6,000.00

Northeast East Elementary School
Custodial equipment
 \$1,000.00

Ruth House
Technology and marketing materials
 \$5,885.00

St. Mary's Community Kitchen & Pantry
Supplies and necessities
 \$4,500.00

Sullivan City Fire Department
Two thermal imaging cameras
 \$16,000.00

Sullivan City Police Department
Tables and chairs to conduct in-house trainings
 \$6,440.00

Sullivan County Public Library
Archival, storage and display supplies to properly handle and preserve historical items received from the Sullivan County History Museum
 \$8,898.00

Vigo County – \$352,220.00

12 Points Brown Bag Project

Nutrition and hygiene items to provide to residents of two public housing units on Terre Haute's north side
\$3,000.00

Arts Illiana

Art exhibitions and workshops for local artists (an underserved area in Vigo County)
\$7,500.00

Art Spaces

Sculpture in Deming Park celebrating the story of the Lost Creek Settlement
\$25,000.00

Blood Services Vigo County – American Red Cross

Supplies for local blood drives
\$5,000.00

Catholic Charities

Employee security training
\$10,000.00

Chances and Services for Youth

Program support for Big Brothers Big Sisters
\$20,000.00

CANDLES Museum

Digitization of the Eva Kor Collection
\$8,000.00

Crossroads of America Council, Boy Scouts of America

ScoutReach program
\$10,000.00

Intrepid Phoenix

Fitness for Recovery (a substance abuse disorder recovery program)
\$14,600.00

Ivy Tech Foundation

Capital improvements to the health sciences building on the Terre Haute campus, year two of two
\$25,000.00

Linda Luebke Strings Festival

Scholarships and program expenses for the two-day strings festival involving youth from throughout Vigo County
\$5,000.00

Lost Creek Township

Garden Trail restroom facility
\$20,000.00

Mollie Wheat Memorial Clinic

Women's Health Day event
\$2,500.00

Next Step

Recovery Café Terre Haute
\$15,000.00

Providence Health Care

Blanket warming machine
\$10,120.00

REACH Services

Technology and education expansion for Pathways
\$25,000.00

Saint Joseph University Parish

Utility Assistance Fund
\$12,500.00

Saint Mary-of-the-Woods College

ADA upgrades to the SMW Conservatory Auditorium
\$20,000.00

Team Acorn Triathlon Club

Tent to provide shade and house medical supplies
\$4,000.00

Terre Haute Chamber of Commerce

Business Concierge Hospitality Training Program
\$15,000.00

Terre Haute Children's Museum

Renovation of multipurpose room
\$25,000.00

United Way of the Wabash Valley

Launch of the African American Board Leadership Institute
\$20,000.00

Vigo County Historical Society

Restoration and repairs to the Paul Dresser Home
\$25,000.00

YMCA

Sensory tools/equipment
\$25,000.00

Donor-advised, Designated and Agency Endowed Funds – \$1,400,174.32

14th & Chestnut Community Center Endowment Fund

14th & Chestnut Community Center
\$6,644.00

AgriInstitute Endowment Fund

AgriInstitute, Inc.
\$453.00

Angels for Eastside Fund

Clay Community Schools
\$395.00

Angels for Sullivan Elementary School

Sullivan Elementary School
\$541.00

Angels for Sullivan Junior High School Fund

Southwest School Corporation
\$445.00

Annunciation Church Educational Endowment Fund

Annunciation Catholic Church
\$549.00

ARC of Vigo County Endowment Fund

ARC of Vigo County
\$244.00

Area 7 Agency on Aging and Disabled Endowment Fund

Area 7 Agency on Aging and Disabled
\$1,003.00

Art Spaces Endowment Fund

Art Spaces, Inc.
\$373.00

Art Spaces Preservation Fund

No Grant Awarded

Barbara A. Vogel Fund for the Sheldon Swope Art Museum

Sheldon Swope Art Museum, Inc.
\$337.00

"Blessed for Another Day" – Matt Luecking Memorial Endowment Fund

Vigo County Education Foundation
\$764.00

Boy Scouts of America, Crossroads of America Council Endowment Fund

Boy Scouts of America, Crossroads of America Council
\$1,468.00

Brenda Howell Angel Fund

Vigo County Education Foundation
\$681.00

Brown Baggers School Food Program Endowment Fund

Brown Bagger School Food Program
\$2,506.00

Bruce and Nancy Brentlinger Family Fund

No Grant Awarded

C.H.A.N.C.E.S. and Services for Youth Endowment Fund

Chances and Services for Youth
\$2,582.00

Catholic Charities Endowment Fund

Catholic Charities of Terre Haute
\$697.00

Charles Harlan Fund for the Hull Cemetery

Hull Cemetery Association, Inc.
\$9,714.00

Clabber Girl Fund for Camp Riley

Riley Memorial Association
\$4,425.00

Clay Community Schools CAPE Fund

Clay Community Schools
\$24,127.99

Clay County Community Foundation Operating Endowment

Operating Fund
\$5,700.00

Clay County Genealogical Society Fund

Clay County Genealogical Society
\$329.00

Clay County Hospital Health Improvement Fund

No Grant Awarded

Clay County YMCA Endowment Fund

YMCA of the Wabash Valley
\$2,807.00

Clay Youth Baseball League Fund
Clay Youth Baseball League
\$333.00

Clothes Closet Endowment Fund
League of Terre Haute
\$382.00

Col. Peter Baer Memorial Fund
14th & Chestnut Community Center
\$293.00

Community Kitchen Endowment Fund
First Presbyterian Church of Sullivan
\$2,387.00

Community Theatre of Terre Haute Endowment Fund
Community Theatre of Terre Haute
\$402.00

Crossroads of America Youth Orchestra Endowment Fund
Linda Luebke Strings Festival Fund
\$8,779.58

Cyril W. & Mary H. Hicks Memorial Fund for Forest Park
City of Brazil
\$49,731.00

Danette Angermeier Memorial Fund
Sheldon Swope Art Museum, Inc.
\$120.00

David and Jerry Penman Mitchell Concertmaster Chair Fund
Terre Haute Symphony Association
\$570.00

Delmar L. and Betty L. Jones Fund for Hospice
Visiting Nurse Association of the Wabash Valley, Inc.
\$1,276.00

Dierdorf Fund
Clay County Humane Shelter
\$33,697.00

Dispute Resolution Center Endowment Fund
Dispute Resolution Center for the Wabash Valley
\$293.00

Don and Jane Fread Memorial Fund
Maple Ave. United Methodist Church
\$608.00

Donna J. Doti Endowment Fund
Mary's Children, Inc.
\$1,184.00

Earl and Hazel Travioli Charitable Endowment Fund
Natalie Pugh Memorial Scholarship Fund
\$5,315.50
American Cancer Society, Vigo County Unit
\$5,315.50
Indiana State University Foundation
\$5,315.50
American Heart Association
\$5,315.50

Earl and Tina Elliott Advised Fund
Natalie Pugh Scholarship Fund
\$2,000.00
St. Benedict Church
\$10,000.00
Catholic Charities of Terre Haute
\$1,000.00
Next Step Foundation, Inc.
\$2,500.00

Edmund J. and Mary R. Dede Fund
Gibault Foundation, Inc.
\$1,797.45
Light House Mission, Inc.
\$1,798.71
Sheldon Swope Art Museum, Inc.
\$1,798.71
Rose-Hulman Institute of Technology
\$1,798.71
St. Benedict Church
\$1,798.71
Catholic Charities of Terre Haute
\$1,797.45
Visiting Nurse Association of the Wabash Valley, Inc.
\$1,797.42

Eileen Stith Jensen Endowment Fund for the Sheldon Swope Art Museum
Sheldon Swope Art Museum, Inc.
\$13,921.00

Elizabeth Smudde Memorial Fund
Sacred Heart Church
\$961.00

Emily Shagley Memorial Fund
No Grant Awarded

Emily's Walk on the Wabashiki Fund
West Vigo Community Corp (Center)
\$500.00
West Vigo High School
\$1,000.00
Terre Haute Children's Museum
\$250.00
Wabash River Development and Beautification, Inc.
\$250.00
reTHink, Inc.
\$500.00

Esther MacBain Meeks Memorial Fund for Children's Literature
Friends of Vigo County Public Library
\$638.00

Felstein Grandchildren Fund in Memory of Allen & Millie Felstein
United Hebrew Congregation Foundation
\$536.21

Fred and Nancy Nation Endowment Fund
No Grant Awarded

Fund to Honor Coach Paul E. Weekley
Northeast School Corporation
\$252.00

Garfield High School Purple Eagle Plaza Community Project Fund
Sincerus
\$8,250.00

Genevieve E. Klueh Endowment Fund
Terre Haute Humane Society
\$1,125.00

George C. Carroll Memorial Fund
Sheldon Swope Art Museum, Inc.
\$5,683.00

George I. and Rose E. Felstein Fund
Shriners Hospitals for Children
\$992.90
Riley Memorial Association
\$992.90
Visiting Nurse Association of the Wabash Valley, Inc.
\$992.90
Rose-Hulman Institute of Technology
\$992.90
Terre Haute Boys and Girls Club
\$1,489.35
United Hebrew Congregation Foundation
\$1,985.80
Union Health Foundation, Inc.
\$2,482.25

Gibault Fund
Gibault Foundation, Inc.
\$5,315.00

Gill Township Volunteer Fireman's Operational Fund
Gill Township Volunteer Fire Fighters, Inc.
\$463.00

Girl Scouts of Central Indiana Fund
Girl Scouts of Central Indiana
\$750.00

Golish Family Memorial Fund for Light House Mission
Light House Mission, Inc.
\$4,650.00

Golish Family Memorial Fund for Spay-Neuter League, Inc. in Terre Haute Indiana
Spay-Neuter League
\$4,650.00

Goodwill Industries Endowment Fund
Wabash Valley Goodwill Industries, Inc.
\$4,496.00

Guido and Barbara Miescher Endowment Fund
Sheldon Swope Art Museum, Inc.
\$13,026.00

Haley Kathryn Smith Memorial Fund
No Grant Awarded

Happiness Bag Endowment Fund
Happiness Bag, Inc.
\$313.00

Harlan Farmers Chapel Church Fund
Farmers' Chapel Community Church
\$4,704.00

Harriet McNeal Fund for the Sheldon Swope Art Museum
Sheldon Swope Art Museum, Inc.
\$325.00

Herman and Coriene White Charitable Fund
Western Indiana Community Foundation
\$4,000.00
Vermillion Trails Alliance
\$18,000.00
Parke Vermillion County Humane Society
\$1,500.00

Hermine M. Haslem Endowment Fund for the Sheldon Swope Art Museum
Sheldon Swope Art Museum, Inc.
\$2,419.00

Hospice of the Wabash Valley Endowment Fund
Visiting Nurse Association of the Wabash Valley
\$879.00

Humane Society Fund
Terre Haute Humane Society
\$4,572.00

Humane Society of Sullivan County Endowment Fund
Humane Society of Sullivan County
\$2,489.00

Irwin & Mary Reiss Operating Endowment Fund for the Sullivan County Community Foundation
Operating Fund
\$498.00

Ivy Tech Technology Endowment Fund
Ivy Tech Community College
\$1,438.00

J. Carter Hale Memorial Fund
No Grant Awarded

J. Laurence and Barbara A. Passmore Charitable Endowment Fund
Wabash Valley Crew
\$10,000.00

J. Morton & June K. Swango Fund
Terre Haute Parks & Recreation Department
\$13,533.50
Vigo County Parks & Recreation Department
\$13,533.50
TREES, Inc.
\$13,533.50
History Center of Vigo County
\$13,533.50

Jackie's Garden Fund
No Grant Awarded

James Eddy Hatch Endowment Fund
Indiana State University Foundation
\$3,700.00

Jamie Jacobsen Memorial Endowment Fund
FSA of the Wabash Valley, Inc.
\$2,400.00

Jason A. Harvey Memorial Endowment Fund
No Grant Awarded

Jerry and Jo Einsteadig Endowment Fund
No Grant Awarded

Jesse R. Sherwood Fund
Town of Carlisle
\$2,288.00

Jessie E. Hickman Fund
Union Health Foundation, Inc.
\$3,295.40
Rose-Hulman Institute of Technology
\$3,295.40
St. Stephen's Episcopal Church
\$1,647.70
Central Presbyterian Church
\$1,647.70
YMCA of the Wabash Valley
\$1,647.70
Terre Haute Boys and Girls Club
\$1,647.70
Saint Mary-of-the-Woods College
\$3,295.40

Jim and Beverly Cristee Fund
Terre Haute Symphony Association
\$500.00
Art Spaces, Inc.
\$500.00

John Rogers Cox Preservation Fund
Sheldon Swope Art Museum, Inc.
\$2,652.00

Joseph A. Bray Detachment 471 Marine Corps League Endowment Fund
VA Illiana Health Care System
\$1,553.00
Richard L. Roudebush VA Medical Center
\$1,553.00

Katherine Hamilton Endowment Fund for Hamilton Center, Inc.
Hamilton Center, Inc.
\$761.00

Kay Aubin Memorial Fund
Our Father's Arms, Inc.
\$247.00

Kelly Fuqua Memorial Fund
Clay County Humane Shelter
\$520.00

Kiwanis Club of Terre Haute Fund
Dugger Elementary School
\$500.00
Vigo County School Corporation
\$500.00

Larry C. Archer Memorial Fund for Autism Awareness and Understanding
Mount Pleasant United Methodist Church
\$2,052.00

League of Terre Haute Endowment Fund
League of Terre Haute
\$811.00

Leo & Virginia Pllum Endowment Fund
Sullivan County Community Hospital
\$412.25
Sullivan County Community Grant Fund
\$412.00
American National Red Cross, West Central Indiana
\$412.25

Light House Mission Endowment Fund
Light House Mission, Inc.
\$338.00

Marilyn Scott Allen Fund
Sheldon Swope Art Museum, Inc.
\$4,500.00

Marilyn Wheeler Pendergast Foundation Fund for the Sheldon Swope Art Museum
Sheldon Swope Art Museum, Inc.
\$1,953.00

Marion and Marie Kattman Sendmeyer Endowment Fund for Poland Historical Chapel
Poland Chapel Historic Society
\$2,158.00

Mary and Don Smith Fund
No Grant Awarded

Mary Ann Carroll Fund for the Sheldon Swope Art Museum
Sheldon Swope Art Museum, Inc.
\$330.00

Mary Ann Stadler Memorial Fund
No Grant Awarded

Mary Ellen Adams Endowment Fund for the Eastside Church of Christ
Eastside Church of Christ
\$273.00

Mary Kindrick Memorial Fund
Archdiocese of Indianapolis – United Catholic Appeal
\$10,988.80
St. Margaret Mary Church
\$10,988.80
Sisters of Providence
\$10,988.80
Saint Meinrad School of Theology
\$10,988.80
Rose-Hulman Institute of Technology
\$10,988.80

Mental Health Association in Vigo County Endowment Fund
Mental Health America
\$349.00

Merom Conference Center Endowment Fund
Merom Camp & Retreat Center, Inc.
\$4,005.00

Merom Improvement Association Agency Fund
Merom Improvement Assoc., Inc.
\$2,671.00

Merom United Methodist Church Endowment Fund
Merom United Methodist Church
\$5,163.00

Miriam Fund for the Sheldon Swope Art Museum
Sheldon Swope Art Museum, Inc.
\$1,071.00

Myrl & Marie Wilkinson Endowment Fund
Operating Fund
\$8,542.00

Nancy Hellmann Educational Fund
Vigo County Education Foundation
\$300.00

Newman Family Endowment Fund

Terre Haute Humane Society
\$250.00
Tunnel to Towers Foundation
\$100.00
Golden Retriever Rescue & Community Education
\$100.00
14th & Chestnut Community Center
\$100.00
Exotic Feline Rescue Center
\$100.00
League of Terre Haute
\$350.00
Dog It Dig It Rescue
\$345.00

Norma G. McNeill Fund

Wabash Valley Community Foundation
\$467.05
Open Arms Christian Ministries
\$8,873.95

Norma Lemmon Evans Fund for the Sheldon Swope Art Museum

Sheldon Swope Art Museum, Inc.
\$362.00

North Clay Student Art Collection Endowment Fund

North Clay Middle School
\$233.00

O. Earl and Tina Elliott Children Advised Fund

Earl and Tina Elliott Advised Fund
\$1,000.00

Our Father's Arms Charitable Fund

Our Father's Arms, Inc.
\$435.00

Patrick and Mary Cahill Family Endowment Fund

No Grant Awarded

Paul Edmiston Agriculture Education Fund

Sullivan High School
\$555.00

Pfister Fund

Catholic Charities of Terre Haute
\$2,035.62
Mother Theodore Corporation IV
\$11,874.45
St. Joseph University Parish
\$1,357.08
Sacred Heart Church
\$2,035.62
St. Benedict Church
\$1,357.08
Archdiocese of Indianapolis – United Catholic Appeal
\$1,357.08
Franciscan Retreats, Inc.
\$678.54
Sisters of Our Lady Mt. Carmel
\$5,089.05
Sisters of Providence
\$6,785.40
Wabash Valley Health Center
\$1,357.08

Posey Township Volunteer Fire Department Endowment Fund

Posey Township Volunteer Fire Department of Clay County
\$525.00

Primo A. and Sylvia A. Andres Fund

St. Margaret Mary Church
\$438.00

Purdue Extension Vigo County Endowment Fund

Purdue Extension
\$1,164.00

Ralph and Helen Tevlin Endowment Fund

History Center of Vigo County
\$70.00

Richard Alcock Memorial Fund

Vigo County Education Foundation
\$100.00
Terre Haute Symphony Association
\$100.00
Terre Haute Children's Museum
\$175.00
Sheldon Swope Art Museum, Inc.
\$125.00

Richard and JoAnne Rowe Educational Fund for Musical Arts

Terre Haute Symphony Association
\$527.00

Richard and Virginia McHugh Fund

Shelburn United Methodist Church
\$223.00

Richard C. Vining Endowment Fund

United Way of the Wabash Valley
\$500.00

Robert and Carolyn Steinbaugh Fund for the Sheldon Swope Art Museum

Sheldon Swope Art Museum, Inc.
\$333.00

Robert P. White Elks Charitable Fund

Indiana Elks Charities
\$12,253.00

Robert S. Ratcliffe Memorial Fund

Community Theatre of Terre Haute
\$251.72
Girl Scouts of Central Indiana
\$251.64
Boy Scouts of America, Crossroads of America Council
\$251.64

Rod Bradfield Art Fund

Vigo County Education Foundation
\$315.00

Ronald G. Reeves Endowment Fund

Boy Scouts of America, Crossroads of America Council
\$488.80
First Congregational Church
\$2,444.00
United Way of the Wabash Valley
\$488.80
Sheldon Swope Art Museum, Inc.
\$244.40
Wabash Valley Family Sports Center
\$488.80
TREES, Inc.
\$244.40
Wabash Valley Community Foundation
\$488.80

Roy E. Brown Memorial Fund

City of Brazil
\$216.00

Saint Ann Clinic Endowment Fund

Wabash Valley Health Center
\$6,465.00

Saint Benedict Church Endowment Fund

St. Benedict Church
\$1,447.00

Saint Joseph University Parish Fund

St. Joseph University Parish
\$223.00

Shagley Family Fund for the Sheldon Swope Art Museum

Sheldon Swope Art Museum, Inc.
\$373.00

Sheldon Swope Art Museum Endowment Fund

Sheldon Swope Art Museum, Inc.
\$29,756.00

Shepherds of Griffin Bike Park Fund

Shepherds of Griffin Bike Park
\$3,919.06

Southwest High Schools Alumni Association – Cooper Endowment

Southwest High Schools Alumni Association, Inc.
\$4,958

Spay-Neuter League Endowment Fund

Spay-Neuter League
\$4,698.00

Stair Steps to Success Endowment Fund

Chances and Services for Youth
\$686.00

Sullivan County 4-H Endowment Fund

Sullivan County 4-H
\$634.00

Sullivan County Ag Day Fund

No Grant Awarded

Sullivan County Community Hospital Foundation Endowment Fund

Sullivan County Community Hospital
\$2,300.00

Sullivan County Operating Endowment Fund

Operating Fund
\$5,721.00

Sullivan County Public Library Endowment Fund
Sullivan County Public Library
\$442.00

Sullivan County Public Library Genealogy, Family & County History Endowment Fund
Sullivan County Public Library
\$1,833.00

Sullivan County Soil and Water Conservation Fund
Sullivan County Soil & Water Conservation District
\$4,745.00

Sullivan Presbyterian Church Mission Fund
First Presbyterian Church of Sullivan
\$495.00

Sumar Fund for the Salvation Army
Salvation Army
\$6,004.00

Susie Dewey Fund for the Sheldon Swope Art Museum
Sheldon Swope Art Museum, Inc.
\$317.00

Sycamore Trails RC&D Endowment Fund
Sycamore Trails RC&D Council, Inc.
\$2,356.00

Sycamore Trails RC&D SCCF Endowment Fund
Sycamore Trails RC&D Council, Inc.
\$390.00

Terre Haute Academy of Medicine Fund
SEFI / Science Education Foundation of Indiana
\$1,011.00

Terre Haute Bar Association Endowment Fund
No Grant Awarded

Terre Haute Boys and Girls Club – John G. Schmidt Capital Endowment Fund
Terre Haute Boys and Girls Club
\$400.00

Terre Haute Boys and Girls Club – Max Gibson Endowment Fund
Terre Haute Boys and Girls Club
\$1,410.00

Terre Haute Catholic Charities Foodbank Endowment Fund
Catholic Charities of Terre Haute
\$13,932.00

Terre Haute Children's Science and Technology Museum Endowment Fund
Terre Haute Children's Museum
\$18,313.00

Terre Haute Day Nursery Association Endowment Fund
United Child Care Center
\$5,040.00
ISU Early Childhood Education Center
\$3,492.00
Sheldon Swope Art Museum, Inc.
\$2,300.00
Hamilton Center, Inc.
\$13,175.00

Terre Haute Parks Department Endowment Fund
No Grant Awarded

Terre Haute Parks Department Project Fund – Hulman Links
Terre Haute Parks & Recreation Department
\$6,000.00

Terre Haute Rotary Club Endowment Fund
Terre Haute Rotary Foundation, Inc.
\$1,808.00

Terre Haute Symphony Association – Walter and Margaret Reed Fund
Terre Haute Symphony Association
\$3,873.00

Terre Haute Symphony Association Fund
Terre Haute Symphony Association
\$6,243.00
Jerry and David Mitchell Fund for the Terre Haute Symphony
\$533,545.77

Terry and Beth Tevlin Family Endowment Fund
Sheldon Swope Art Museum, Inc.
\$250.00
History Center of Vigo County
\$180.00

Terry and Judy Hogan Fund
Friends of Rea Park, Inc.
\$5,000.00
St. Benedict Church
\$5,000.00
Terre Haute Symphony Association
\$5,000.00

Terry Ho M.D. Memorial Fund
Sisters of Our Lady Mt. Carmel
\$500.00
St. Patrick Soup Kitchen
\$443.01

The Barnabas Fund
No Grant Awarded

The Essence of Red Committee
Wabash Valley Health Center
\$352.35

The Halo Fund
No Grant Awarded

The Penman Girls Operating Endowment Fund
Operating Fund
\$1,277.00

Thomas L. and Connie L. Francis Endowment Fund for The Sheldon Swope Art Museum
Sheldon Swope Art Museum, Inc.
\$1,925.00

Thomas L. and Patricia W. Kelly Fund
St. Patrick Soup Kitchen
\$575.00
Friends of Rea Park, Inc.
\$575.00

THSO Fund for the Future
Terre Haute Symphony Association
\$4,394.00

Travis James Smith Memorial Fund
Purdue University
\$500.00
Vigo County Education Foundation
\$1,000.00

TREES, Inc. Endowment Fund
TREES, Inc.
\$1,411.00

Turman Township Youth Foundation 2000 Limited Fund
Turman Township Youth Foundation
\$215.00

United Cerebral Palsy Endowment Fund
REACH Services, Inc.
\$343.00

United Way of the Wabash Valley – Ada Hodge Fund
United Way of the Wabash Valley
\$12,175.00

United Way of the Wabash Valley Endowment Fund
United Way of the Wabash Valley
\$326.00

United Way of the Wabash Valley Operating Endowment
United Way of the Wabash Valley
\$5,730.00

Veterans of Foreign Wars, Post 972 Charitable Endowment Fund
No Grant Awarded

Vigo County CASA Fund
Vigo County CASA
\$1,000.00

Vigo County Education Foundation Endowment Fund
Vigo County Education Foundation
\$2,738.00

Vigo County Historical Society Endowment Fund
History Center of Vigo County
\$7,791.00

Vigo County Parks and Recreation Department Projects Fund
No Grant Awarded

Vigo County Public Library Endowment Fund
Vigo County Public Library
\$521.00

Visiting Nurse Association of the Wabash Valley, Inc. Endowment Fund
Visiting Nurse Association of the Wabash Valley
\$298.00

Voltmer Family Endowment Fund
No Grant Awarded

Wabash Valley Community Foundation Board Operating Endowment Fund
Operating Fund
\$642.00

Wabash Valley Community Foundation Operating Endowment Fund
Operating Fund
\$19,985.00

Walter and Katherine Bledsoe Foundation Fund
Wabash Valley Health Center
\$2,269.50
St. Benedict Church
\$2,269.50

West Terre Haute Clinic Community Project Fund
Valley Professionals Community Health Center
\$28,890.69

Western Indiana Community Action Agency Fund
Western Indiana Community Action Agency, Inc.
\$297.00

World Gospel Church Missions Endowment Fund
World Gospel Church, Inc.
\$4,638.00

Scholarships

Total Awarded = \$1,090,845
159 Scholarship Funds
156 Students Receiving Awards

Advantage Plus of Indiana Federal Credit Union Scholarship Fund
Haylee Chumley

Advice McCrae Scholarship Fund
Christopher Jaeger

Albert A. Landes Endowed Scholarship Fund
Emma Dickison
Shelby Cobb

Albert and Freda Eder DeCoursey Scholarship Fund
Madeline Sindors

Albert and Verna McKee Memorial Scholarship Fund
Cody Hutchison

Alyssa Mechelle Hogue Memorial Scholarship Fund
Carter Campbell

Ambrose and Miriam Rubey Scholarship Fund
No Scholarship Awarded

Andy and Edythe Turner Memorial Scholarship Fund
Cailin Morris

Bentrup Family Nursing Scholarship Fund
Jaycee Dyer

Bentrup Family Scholarship for Mechanical Engineering Fund
Paul Maicher
Noberto Martinez

Bernard C. Hoilman Scholarship Fund
Gage Knowes

Beta Sigma Phi City Council Scholarship Fund
Theron Strong

Betty E. and Curt DeBaun, Jr. Aviation Scholarship Fund
Noah Garriss
Sawyer Johnson

Bill Wood Insurance Adjuster's Scholarship Fund
Bryce McLeish

Blair Endowment Fund
Trinity Trefz

Bob & Olive Sanders Family Scholarship Fund
Jerome Blevins

Bob Romas Memorial Scholarship Fund
Jacob Hogg

Brazil Business & Professional Women's Club Scholarship Fund
Stuart Bennett

Brent & Helen Rentschler Scholarship Fund
Kaylee Miller

Camden Scott Romas Memorial Scholarship Fund
No Scholarship Awarded

Cameron Taylor Memorial Scholarship Fund
Mason Meeks Johnson

Carol M. Starkey Kochell Scholarship Fund
Johnathan Otte
Cameron Roush

Catherine Elizabeth Grimes Memorial Scholarship Fund
Haylee Chumley

Charles Carter Hedrick Memorial Scholarship Fund
No Scholarship Awarded

Charles F. and Nancy A Bradford Scholarship Fund
William Svihla

Charles W. Harbison Scholarship
Bryannah Burgett

Cheryl Sanders Konowitz Nursing Scholarship
Rylee DeHart

Chris Gilbert Memorial Scholarship Fund
Madison Mahady

Clay County Scholarship Fund
Jacob Hogg

Cyril W. Hicks & Mary H. Hicks Scholarship Fund
Kamryn Hardey
Layla Lee

Dan & Jane Robbins Northview Marching Knights Scholarship Fund
Mason Shorter

David A. Gilman, Ph.D. Memorial Scholarship Fund
No Scholarship Awarded

Deakins/Shattuck Memorial Scholarship Fund
Jacob Hogg

Dedia M. Sexton Scholarship Fund
Jacob Hogg
Layla Lee

Dedia M. Sexton Scholarship Fund for the Indiana School for the Deaf
Zachary Bippus
Nicholle Bradach

Denise D. & John C. Bell Scholarship Fund
Emilie Floyd

Dercie E. (Hawkins) Simmons Education Scholarship
Josie Gettinger
Sophie Hurst

Diane K. Marheine Memorial Scholarship Fund
Madison Keller

Don and Mary Goltry Scholarship Fund
No Scholarship Awarded

Dorothy Wurst Porter Scholarship Fund
Johnathan Otte

Dr. and Mrs. James O. Conklin Scholarship Fund
Cheyenne Stewart
Aiya Vaughn

Dr. Charlotte M. Boener Scholarship Fund
Taylor Denning
Ashley Heindel
Audrey Vandevender

Dr. James Harvey Crowder Memorial Scholarship Fund
Maura Secrest

Dr. John E. Freed, Jr. Memorial Scholarship Fund
Mary Ann Etling

Dr. Robert K. Webster & Wanda Webster, R.N. Scholarship Fund
Emilie Floyd

Dr. Susan M. Latta, Ph.D. Memorial Scholarship Fund
Reagan Motsinger

Dr. William W. Drummy Memorial Scholarship
Kinley Ballrd

Earl & Hazel Travioli Scholarship

Arianna Greene
Nicole Horton
Amanda Kelley
Giana White

Earl F. Hopkins Scholarship Fund

Mackenzie Stanley

Eleanor Jane Dixon Hoilman Scholarship Fund

Josie Lyons
Morgan Nelson

Elizabeth A. Bledsoe Scholarship Fund

Johni Boone

Erskine Lee and Eula Webb Scholarship Fund

Johnathan Otte

Esther Ruddell Ladson Scholarship Fund

William Newby

Evelyn W. Gettinger Indiana University Scholarship Fund

Gracie Shorter

Everett E. & Fern A. Tucker Scholarship Fund

Rylie Head

Farmersburg Alumni Association Scholarship Fund

David Keller

Floyd and Irene Phillips Scholarship Fund

Summer Hiatt

Fred A. & Nannie O. Graham Scholarship Fund

No Scholarship Awarded

Fred Christman Scholarship Fund

Jaidlyn Arney

Garrett A. Pendergast and Stephanie M. Welsh Police and Fireman Scholarship Fund

Chloe Denny

Garrett Pendergast Scholarship Fund

Haylee Chumley

Gary & Leesa Nesty Scholarship Fund

No Scholarship Awarded

Gay Floyd RN Memorial Scholarship Fund

Kinley Ballard

Gene K. and Charlotte Taylor Shike Scholarship Fund

Ashley Dunkin

Gerstmeyer Technical High School Scholarship Fund

Carter Campbell

Gill Township Scholarship Fund

Brooklyn Coulson

Glenn High School Alumni Scholarship Fund

Haylee Chumley

Halie's Rainbow – The Halie Hite Memorial Scholarship Fund

Mason Shorter

**Kamryn Hardey**

Cyril W. Hicks &
Mary H. Hicks
Scholarship Fund

Hazel A. Dennis,
R.N. Nursing
Scholarship Fund

Harold Paul Loveall III Memorial Scholarship Fund

Michael Herrmann

Harriet Hicks Scholarship Fund

Trinity Trefz

Harry M. & Rosemary L. Grandey Scholarship Fund

Madelyn Gearld

Hazel A. Dennis, R.N. Nursing Scholarship Fund

Kamryn Hardey

J.P. Alexander Memorial Scholarship Fund

Drake Catlin

Jack Fox Memorial Scholarship Fund

Grace Kidwell

Jack Lower Memorial Scholarship Fund

Alison Siples

James F. Jackson Scholarship Fund

Cheyenne Stewart

Janet Romine Chatfield Business Award

Zachary Weir

Janice Hart Modesitt, R.N. Nursing Scholarship Fund

Makenna McNabb

Jeffrey Alan Cole Memorial Scholarship Fund

Zachary Weir

Jennifer M. Dunham Memorial Scholarship Fund

Nicholas Roark

Jenna Kay Perrelle Memorial Scholarship Fund

Paige Baldwin
Jadelyn Runyan

Jesse O. & Martha L. Reynolds Scholarship Fund

Bailey Horton

Jim Case Scholarship Fund

Carlee Zellers

Jo Ann F. Johnson Memorial Scholarship Fund

Amber Beauchman

John & Myrtle Price Scholarship Fund

Jacob Hogg

John & Eunice Organ Valedictorian Award

Logan Carie
Damon Earle
Scott Fusco
Alyssa Pike
Alexis Simpson
Genevieve Vandergriff
Kendra Wineinger

John D. Gettinger Purdue Scholarship Fund

Emilea McGowan

John K. and Helen M. Lemry Scholarship Fund

Madison Cook
Grace Palmer

John Kasis Memorial Scholarship Fund

Mekhi Moore

John Schoffstall Memorial Scholarship Fund

Keegan Beeler
Kaden Whitaker

Joseph E. and Dorothy Archer Scholarship Fund

Carter Campbell
Colin Frank
Katelyn Graham
Addyson Jackson
Carson Lutz

Josh Kackley Memorial Scholarship Fund

Hannah Driskill

Kimberley Jeanne Fowler Wulf Scholarship for Catholic Education

Cheyenne Stewart

Larry Paul Fleschner Scholarship Fund

Parker Mahurin

Laura Brooke McDonald Memorial Scholarship Fund

Jaidlyn Arney

Lavelda M. Goble Scholarship Fund

Austin Landis

Leon D. and Nancy Shake Huff Scholarship Fund

Bailey Horton

Leon D. and Nancy Shake Huff Sigma Kappa Scholarship Fund

Randi Ulrich

Leylahand A. W. Owens Scholarship Fund

Haylee Chumley

Liane R. Page Memorial Scholarship Fund

Antonio Thomas

Lilly Endowment Alumni Scholarship Fund – Vigo County

Jaycee Dyer

Lilly Endowment Community Scholarship Program

Maureen (Moe) Barrett – Vigo County
Jinna Hyatt – Clay County
Maxwell (Max) Scamihorn – Vigo County
Adam Walker – Sullivan County

Lloyd and Lela Ewbank Scholarship Fund

Hannah Driskill

Mabel Kidwell Scholarship Fund

Stuart Bennett

Marilyn Wheeler Pendergast Foundation Fund for Indiana State University Department of Marketing

Kimberly Collins
Mallory Fields

Marilyn Wheeler Pendergast Foundation Fund for Indiana University School of Law

John McGlone

Marilyn Wheeler Pendergast Foundation Fund for Rose-Hulman Institute of Technology

Camden Ringo

Marilyn Wheeler Pendergast Foundation Fund for Saint Mary-of-the-Woods College

Hailey Blankenship

Martha & Mary Ann Pedlar Scholarship Fund

Emma Nicoson

Max & Helen Pierce Scholarship Fund

Kaitlyn Hofmann

Michael Ryan Keane Memorial Scholarship Fund

Lilly Hagy

Myrl and Marie Wilkinson Scholarship Fund

Dylan Settles
Mason Wetz

Nancy and Dale McKee Family Scholarship Fund

Miller Bough

Norman L. and Carol Rae Isbell Scholarship Fund

Hannah Driskill

Officer Rob Pitts Memorial Scholarship Fund

No Scholarship Awarded



Johnathan B. Otte

Plumbers & Steamfitters Local 157
Scholarship Fund

Dorothy Wurst Porter Scholarship Fund

Carol M. Starkey Kochell Scholarship Fund

Erskine Lee and Eula Webb Scholarship Fund

Wiley High School Alumni Scholarship Fund

Otter Creek Volunteer Fire Department Association, Station #1 Scholarship Fund

Brayton Mier

Peter Anthony Duong Memorial Scholarship Fund

Asael Nunez

Pigg Family Charitable Scholarship Fund for Ivy Tech Community College

No Scholarship Awarded

Pigg Family Scholarship Fund

Sophie Hurst

Plumbers & Steamfitters Local 157 Scholarship Fund

Johnathan Otte

Rachel Marie Romas Memorial Scholarship Fund

No Scholarship Awarded

Randy and Emily Herrington Community Service Award Scholarship

Sadie Herring

Raybestos Powertrain Machine Trades Scholarship Fund

Caden McCrary



Grace Palmer

John K. and Helen M. Lemry
Scholarship Fund

Rebecca Crowder Cole Scholarship Fund

Mary McKinney

Reid & Nina Ross Scholarship Fund

Josie Gettinger
Susan Howard

Renis & Fern Knust Scholarship Fund

Madelyn Gearld

Rex & Sally Pierce Salutatorian Scholarship

Conrad Brocksmith
Tansy Norris

Rex Buntain Tribune Star Scholarship Fund

Jaidlyn Arney

Richard P. and Veada Akers Medical Education Scholarship Fund

Kinley Ballard
Cody Hutchison

Rob & Lisa Denker Scholarship Fund

Kaitlyn Hofmann

Robert P. and Carolyn G. Steinbaugh Scholarship Fund

Nathan Nelson

Rolene Moore Scholarship Fund

Sydney Bays

Roll & Dora King Moore Scholarship Fund

Melanie Harrison

Ronald K. and Sherrill A. Rich Scholarship Fund

Bryce McLeish

Roy & Louie E. Lucas Scholarship Fund

Kaitlyn Hofmann

Roy W. Barnhart Scholarship Fund

Kaitlyn Hofmann

Sallie Unger Scholarship Fund

Seth Nall

Sam J. & Joyce E. Emmert Family Scholarship Fund

Terry Faust

Sara W. Springer Memorial Scholarship Fund

Brooklyn Coulson

**Scottish Rite of the Valley of
Terre Haute Scholarship**

Madison Baumunk
Kelly Culver
Ashley Dunkin
Ashley Johnson
Elizabeth Johnson
Kyleigha Julick
Austin Landis
Kaylee Miller
Emma Nicoson
Cody Ring
George Shagley
Patrick Sizemore
Dru White
Nerius White

**Senator Herman J. Fanning Jr. Memorial
Scholarship Fund**

Kai Miller

SERCOLBE Scholarship Fund

Trinity Trefz

Sherman Educational Scholarship

Morgan Bailey
Kaylee Ballard
Nora Bedwell
Johni Boone
Baylee Brummett
Emaley Corbin
Brooklyn Coulson
Damon Earle
Makynzie Gerig
Lilly Hagy
Summer Hiatt
Gage Knowles
Emma Lighthizer
Madison Mahady
Mary McKinney
Gracie Shorter
John Steele
Haylee Webb
Kendra Wineinger

**Stanton High School Alumni Association
Scholarship Fund**

Mason Shorter

**Steven & Linda Messmer
Scholarship Fund**

Madelyn Gearld



Cheyenne Stewart

Kimberley Jeanne
Fowler Wulf
Scholarship
Fund for Catholic
Education

James F. Jackson
Scholarship Fund

TH 2 ND

Dr. and Mrs. James
O. Conklin
Scholarship Fund

**Sullivan County Purdue Alumni
Association Scholarship Fund**

Brooklyn Coulson

Sullivan County Scholarship Fund

Lilly Hagy

**Sullivan High School Automotive
Scholarship Fund**

Isaac Gunn

Ted & Anna Nesty Scholarship

Lainy Buell

**Terre Haute Junior Golf Association
Scholarship Fund**

Evan Burbrink

**Terre Haute Regional Hospital
Foundation Fund**

Kinley Ballard
Ashley Rogers

**Terre Haute Regional Hospital Medical
Staff Scholarship Fund**

Jaidlyn Arney
Allison Pelfrey
Alison Siples

Terre Haute South Vigo STEM Scholarship

Nathaniel Lommock

TH 2 ND Scholarship

Cheyenne Stewart

**Thomas H. & Mary G. Elmore
Scholarship Fund**

Morgan Hughes

Thomas J. Wright Scholarship Fund

Jerome Blevins

**Thomas M. & Rita L. Wright Agricultural
Scholarship Fund**

No Scholarship Awarded

Tina Clem Memorial Scholarship Fund

Ashley Dunkin

Tom Ewing Memorial Scholarship Fund

No Scholarship Awarded

**Tom McCarthy Memorial
Scholarship Fund**

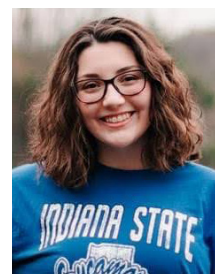
No Scholarship Awarded

**Travis James Smith Mental
Attitude Award**

Andrew Baker

Valentine Family Scholarship Fund

Emma Lighthizer



**Audrey
Vandevender**

Dr. Charlotte M.
Boener Scholarship
Fund

**VFW Post 972 Voice of Democracy
Scholarship Fund**

No Scholarship Awarded

Vigo County Scholarship Fund

Ashley Dunkin

**Vincent G. Sison M.D. Memorial Nursing
Scholarship Fund**

Nevaeh Lauritzen

Virginia M. Buell Scholarship Fund

Jacob Hogg

**Virginia "Pat" Pirtle Nursing
Scholarship Fund**

Chandler Scott

**Wabash Valley Community Foundation
Scholarship Fund**

Hannah Driskill

**Wabash Valley Mechanical Contractors
Association Scholarship Fund**

Reece Bradley
Coltin Higley
Garrett Roush

**Wiley High School Alumni
Scholarship Fund**

Johnathan Otte

**William Fenton Memorial
Scholarship Fund**

No Scholarship Awarded

**William W. Cam, III, Rebecca A. Drummy,
R.N., and Lillian A. Drummy, R.N., Nursing
Scholarship Fund**

Kinley Ballard

**Wright, Shagley and Lowery
Scholarship Fund**

Hannah Driskill

YWCA Scholarship Fund

No Scholarship Awarded

Celebrating 30 Years of Impact

You live here; you work here. You are part of this community's past, present and future. As we celebrated 30 years of impact in the Wabash Valley, we celebrated you and your contributions to making our community a better place to live, work and play. For three decades, the Community Foundation has been able to enrich lives in the Wabash Valley thanks to your belief in the future of our communities, and your willingness to partner with us as we work together to create tomorrow for the Wabash Valley.

Our Community Celebrations

Shaping Community Opportunities

To kick off the 30th Anniversary celebrations, the Community Foundation issued a \$150,000 challenge grant to Wabash Valley Crew in support of a permanent boathouse facility. Through 12-31-2023, the Community Foundation will match \$1 for every \$1 raised by Wabash Valley Crew for the boathouse, up to \$150,000. Adding the boathouse will further enhance current residents' recreational opportunities and create a more vibrant quality of life. Read more on page 8.

Supporting Our Youth

The Community Foundation partnered with our local Fair Boards to sponsor a day at the Clay, Sullivan and Vigo County 4-H Fairs. As a Day Sponsor, the Community Foundation hosted a booth at each county location to greet fair-goers and distribute information about how the Community Foundation works to improve the quality of life in the Wabash Valley.

Recognizing Local Nonprofits

Thirty-nine \$1,000 grants were awarded to nonprofit organizations conducting impactful work to enrich lives in the community. Each board member selected a nonprofit organization within their respective county to receive a \$1,000 grant.





Honoring Our Past and Future

To memorialize our 30-year history and celebrate the Community Foundation's impact, we created a 30th Anniversary video featuring some of our board members and grant recipients.



Recognizing Local Nonprofits

Organizations Receiving 30th Anniversary Board Grants

Clay

- Bowling Green Old Settlers Reunion
- Clay City Early Learning Center
- Clay County Community Theatre
- Clay County Genealogical Society
- Clay Youth Baseball League
- Clay Youth Football League
- Exotic Feline Rescue Center
- Jackson Township Volunteer Fire Department
- Kappa Kappa Kappa, Inc.
- Lewis Township Volunteer Fire Department
- Poland Community Volunteer Fire Department, Inc.
- Purdue Extension of Clay County

Sullivan

- Brown Bagger School Food Program
- Carlisle Lions Community Ambulance Service
- Humane Society of Sullivan County
- North Central High School
- Northeast School Corporation
- Our Father's Arms
- The Salvation Army – Sullivan County Service Extension
- Southwest School Corporation
- Sullivan Area Art Guild
- Sullivan County 4-H
- Sullivan County Health Department
- Sullivan County Public Library
- Sullivan County Youth Sports Complex
- Sullivan Elementary School
- Sullivan High School
- Sullivan Middle School

Vigo

- 14th & Chestnut
- Fellowship of Christian Athletes
- Happiness Bag
- The Helping Hands
- Mollie R. Wheat Memorial Clinic
- REACH Services, Inc.
- Riley Recreational League
- Sheldon Swope Art Museum
- St. Joseph University Parish
- Susie's Place Child Advocacy Center
- United Way of the Wabash Valley

Creating Tomorrow

To recognize the importance of the artistic community, the Community Foundation asked artists to interpret the impact of the Community Foundation upon our communities. Visit our office to see these unique works in person!



EMILY BENNETT

The River Runs Through It

Woven fibers on a steel frame

Fiber art is a unique medium that requires many different fibers to be woven and tied together to create a cohesive work of art. Similarly, our community is made up of many different people from many walks of life. We all find ourselves tied together to create the community we live in. Every piece is needed, even the ones with frayed edges, or the ones that seem too large or small to incorporate. Every member of our community is needed to make Terre Haute a great place to live and work.

The Community Foundation is, at its core, an organization that engages and enriches the lives of the people in our community. Emily chose to visually depict these themes with the Community Foundation's values in mind. The result is a unique piece of fiber art mimicking a small portion of the Wabash River as seen from above.

MICHAEL R. TINGLEY

Creative Legacy

Mixed media

'Creative Legacy' is a collage of original and found images that reference the history and creative expression of Vigo County. The cyanotype print is a photo of East Wabash Avenue that hints at the foundation of our presence. The ghost of miners represented behind the mechanical drawing of building details is an homage to the brick and mortar labor that is the literal foundation of our community. The repurposed Hippodrome Theater backdrop is a reminder that human creative expression has always been an integral part of the establishment of our community. For Michael, our legacy is to build a community that is comforted by the hope of continued creativity.





DIANE MANN

A Community Prospered by WVCF

Abstract impressionistic acrylic on canvas

Diane's painting portrays only a fraction of how the Wabash Valley Community Foundation impacts the lives of residents living in the three counties. The individual portrayals shown represent a bigger fraction, for example, the violinist on the ferry represents all music grants given to various recipients/groups, and the little rural church represents all religious denominations and organizations.

With this artwork, Diane intended to show a community that has been enriched and, in several cases, made possible by the Wabash Valley Community Foundation.

SHARON HAWK

Our Happy Place

Mixed media

This piece was created based on a grant The Sullivan Area Art Guild received from the Community Foundation, allowing the Guild to set up a children's classroom at The Gallery in Sullivan.

During one of the classes, a young boy declared, "This is my happy place." That is what it is all about – a happy place for creating! Something every child needs. In Sharon's painting, a child on each of the end panels is sharing a drawing they did and are very proud to share. The background of maps indicates the many places they could be. But here is their happy place. In the middle panel, several children are shown working on different art projects.

This combination of color, smiles and activity encompasses, 'Our Happy Place.'



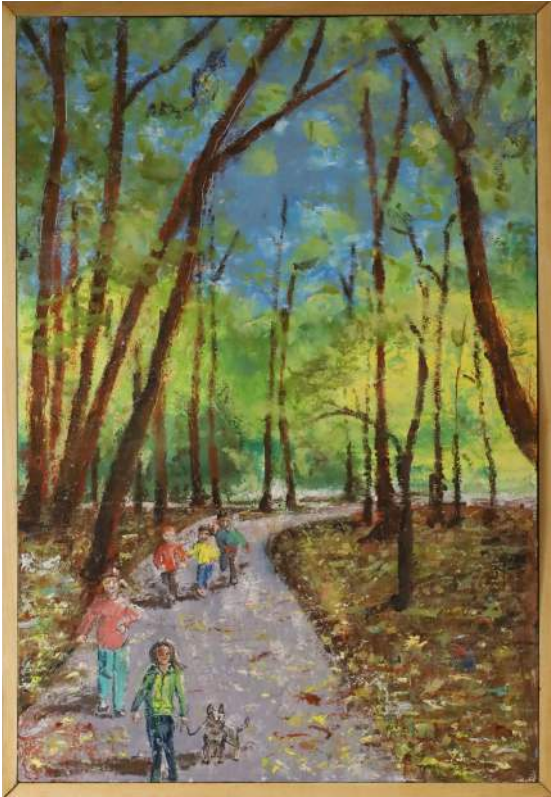
TODD STOKES

Forest Community

Glass etching, sandblasting process

The Community Foundation works to build a forest-like sense of unity in and around the Wabash Valley.

The piece, 'Forest Community' is a metaphor for the Community Foundation. The trees are a community, growing from the same soil, taking nourishment and thriving on common ground, unified in their goal to build a strong community, providing support and shelter with the strength gained from a mineral-rich environment. An environment that the Community Foundation helps maintain and nurture through the many grants and programs that a community needs to grow and thrive.



KORINNE CANTIN

Shared Steps

Encaustic (pigmented wax) on board

As an art teacher, Korinne aims to help her students understand art is valuable to a community and part of what makes Terre Haute a great place to live. The shared experience of art is a valuable piece of her classroom culture. Art brings people together, helps us learn about ourselves and connects us with others.

Shared experiences were an inspiration in her process. When she took her inspiration photo in Hawthorne Park, she had just finished training for her first marathon. Not only was it the perfect autumn day, but Cantin felt it was a capstone for several great moments experienced over the course of living in Terre Haute; her first date with her husband, the place where they married, the place their son took his first art classes, and the race where their son ran his first mile – it all happened in that same park. She has spent many steps in this space and each has changed her.

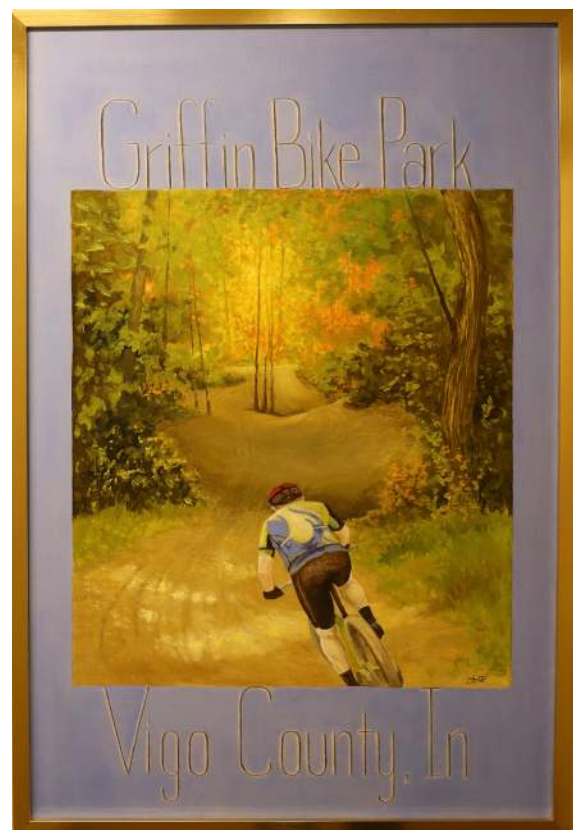
CHRISTEL GUTELIUS

Memories to Hold / Memories to Make

Oil on canvas

This painting depicts a biker enjoying the beauty of one of the many nature trails at Griffin Bike Park. It is based on actual photographs taken at the park.

Christel's son loves the outdoors and is a Marine veteran who served in Afghanistan. When visiting Griffin Bike Park, she saw the pride and respect shown to those who gave their all. She was touched in a special way by the care, thought and time dedicated to creating a place that not only celebrates lost loved ones, but also enriches the lives of mountain bikers, regardless of skill level...The sunlit space at the end of the path is indicative of the choices we make in our lives; moving ahead and hopefully enjoying the ride!





MARY MAYHEW

Helping Others Soar

Oil on linen panel

As Mary considered the mission and vision of the Community Foundation, she was drawn to the actions of people who wanted to invest in future generations through educational scholarships. She chose to focus on one set of these investors, the late Curt and Betty DeBaun, who used the success of their local family business to support aviation students at Indiana State University.

Her painting portrays them with their 1946 Aeronca Champ and the modern trainer currently used by the ISU Flight Academy, the Diamond DA-20. She desired to portray the DeBauns' generous and cheerful spirit, their interest in aviation and their enjoyment of life.

'Helping Others Soar,' recognizes Curt and Betty Debaun, but also represents many other donors, and the work of the Community Foundation in educating, engaging and enriching the local community.

SUE WYNNE

In Giving...

Digital photography infused metal print

Sue's piece, 'In Giving...' is composed of three separate photographic images combined to make one image. The open hands represent the giving the Community Foundation does. The flower represents the nurtured gift the organization gives to our community. The background photograph of the wide-open sky represents the larger community of Clay, Sullivan and Vigo counties.

Through grants and scholarships, the community itself benefits greatly as a whole. The Community Foundation connects people and organizations who care about causes and issues with benefactors who can help with furthering their mission. It is through the commitment of the Community Foundation that this is achieved.



Ways to Give

The Community Foundation is honored to carry out the charitable interests and intentions of the individuals, families and organizations who have established the funds.

However, you do not need a fund to create a better tomorrow for your community! While many choose to create a fund named after the family or a loved one, it is not a requirement to establish your own fund in order to make a difference. Anyone can help us build a better community with a gift to support a cause or a specific county.

The Community Foundation is able to accept a wide array of assets as contributions to a fund. Because the Community Foundation is a 501(c)(3) charitable organization, contributors will receive the maximum tax benefits available under the law. Ways to give include:

Cash is the easiest way to contribute, whether it is actual cash or a check. The Community Foundation's website, wvcf.org, is a convenient way to give using a credit or debit card.

Appreciated securities, when donated directly to the Community Foundation, allow you to avoid paying the capital gains tax while providing an accompanying income tax deduction for the current fair market value.

IRA Charitable Rollovers provide several benefits. If you are age 70 1/2 and older, you may make a gift of up to \$100,000 from your IRA directly to the Community Foundation. For those aged 72 1/2 and older, the gift can also be used to count against your IRA required minimum distribution (RMD). You can specify the way your gift will be used for creating opportunities for tomorrow while paying no taxes on the transfer. (Congress does not allow you to create a donor-advised fund or a Giving Circle pledge with an IRA Charitable Rollover.)

Gifts of life insurance, with the Community Foundation named as the beneficiary, allow you an immediate tax deduction that approximates the cash surrender value of the policy.

Real estate or personal property may be given to the Community Foundation. Of course, all gifts qualify for a charitable tax deduction in the year the gift was made in accordance with IRS rules.

Retirement IRA and Pension Assets allow your estate and heirs to avoid tax when given to the Community Foundation by designating the Wabash Valley Community Foundation, Inc., as a beneficiary.

Private Foundations or Trusts often require significant time and money to manage. By transferring your private foundation or charitable trust to the Community Foundation, all responsibilities for reports and administrative duties will be carried out by the Community Foundation staff, allowing you to focus on the charitable purpose. Since the Community Foundation is a public charity and does not pay an excise tax, more income is available for charitable purposes.

Giving Circle membership is an excellent way to collaborate with like-minded individuals to make a collective difference for neighbors in need.

A deferred gift, made through your will or estate plan, will provide you the opportunity to leave a legacy of giving while retaining life income or control. Your gift will help shape opportunities in the Wabash Valley. The Community Foundation will work cooperatively with you (and your financial adviser if you wish) to create an endowment that will ensure your wishes are properly followed when the gift is ultimately received. The following are considered to be deferred gifts:

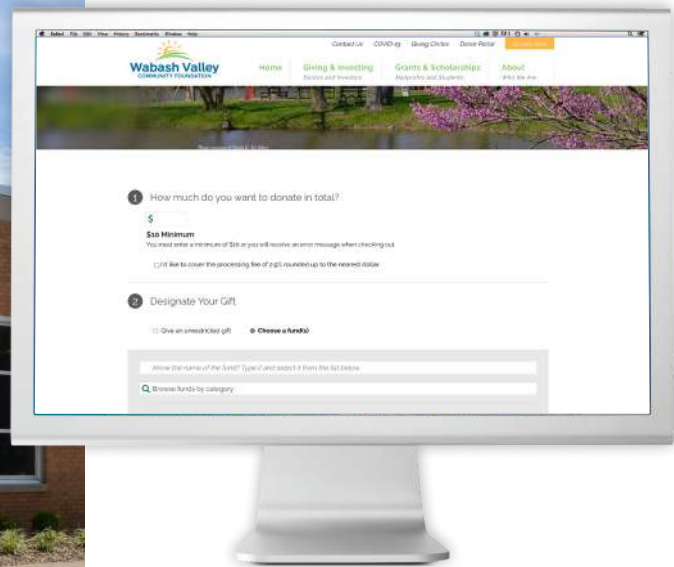
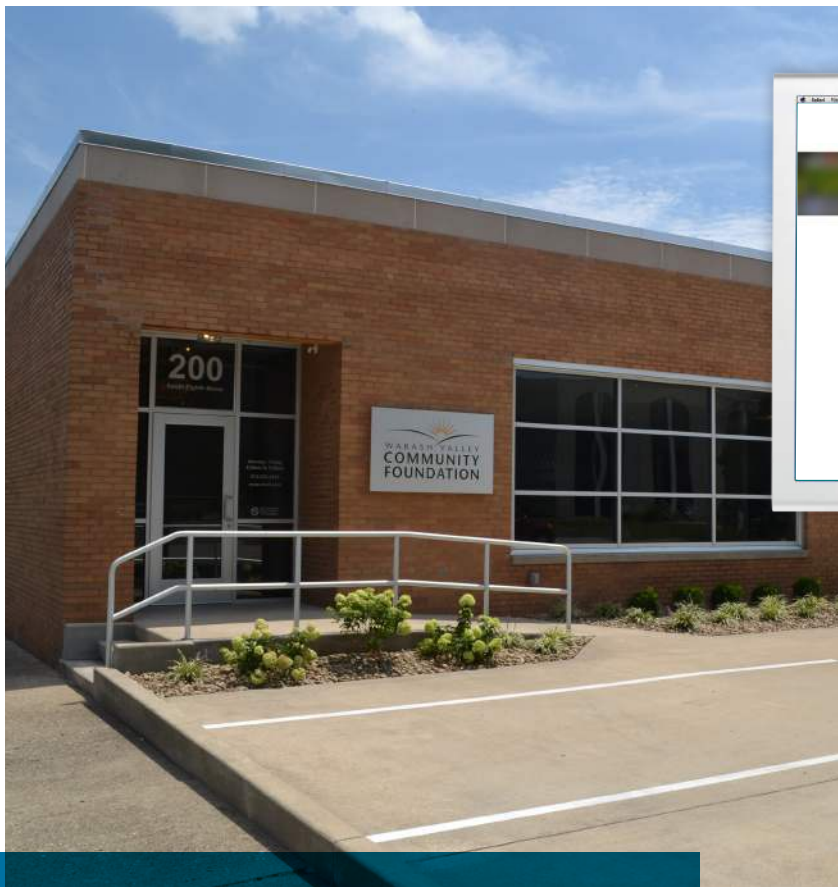
A testamentary gift, or bequest in your will.

A charitable remainder trust allows you or someone you choose to receive an income for life from assets transferred to a trust.

A charitable gift annuity is a simple way to make a substantial gift while retaining the right to a fixed annual income for life.

To help create a better tomorrow for your community, visit us online at wvcf.org/donate to make an online donation through our secured transaction process. Or, you can mail your donation to *200 South 8th Street, Terre Haute, IN 47807*.

If you wish to make a gift of stock, please contact Beth Tevlin at 812-232-2234 prior to doing so to obtain the necessary information. If you are considering making a deferred gift, Beth would be happy to meet with you to discuss your options.



**Make a gift in person
or online!**

Donors

From October 1, 2021 to September 30, 2022

12 Points Revitalization Initiative
14th & Chestnut Community Center
A Gathering Place
Brandi & Michael Adams
Eddy Adams
Kent Adams
Rehana Adat-Lopez
Dr. Mary Ellen Adams
Barry Adelman & Family
Mr. John R. Adkins
AdvantagePlus of Indiana
Federal Credit Union
Ms. Anika Agarwal
Jameel Ahmed
Paul & Rose Ann Akers
Barbara Alcock
Ann & Douglas Allaire
Alex Allen
Alpha Phi Class of 2022,
Depauw University
Alyssa's Custom Cakes & Treats
AmazonSmile Foundation
Amcor Cares Foundation
Barbara & Jimmy Anderson
Betty Anderson
Julie Anderson
Toni L. Anderson
Will & Christine Anderson
Estate of Lois Andrews
Ron, Jane, Anna & Dale Andrews
Anonymous
Mrs. Margie M. Anshutz
Barbara Archer
Joe E. & Dorothy Archer Scholarship Trust
Clay Arnett
Larry Arnold
Art Spaces, Inc.
Kathleen & Dennis Atterson
Bill & PJ Whitney Aubin
Ms. Debby Ault
Sara L. Ault
Stephen & Mary Auten
Sandra Auterson
Autoplex
Mr. & Mrs. George J. Azar
B & S Plumbing & Heating, Inc.
Sue Baer
Mr. & Mrs. Robert Baesler
Baesler's Market
Baesler's Market – Sullivan
Jim & Vicki Bailey
Roxanne Bain
Bert & Lynette Baker
Mary Add & Jim Baker
Tiffany Baker
Brad & Tonya Balch
Pam Bannon
Michael & Vivian Barbiero
Donna Barcus & Family
Barker Family
Charles & Tina Barth
Anne Thiemann Baugh
Stephanie Bean
Dr. Mary E. Beecher
Karen & Jim Beeson
Mr. Travis Behem
Bell Farms
Ms. Carol Bell
Melinda D. McCammon Bement
J. Benell
Robert & Charlene Bennett
Frederick Benson Trust
Estate of Sue Bentrup
Ms. Dorothy Bentz
Otto Berlin
Beta Sigma Phi City Council
Shikha & Kuntal Bhattacharyya
Troy & Pam Biddle
Brad & Jeanne Bilyeu
Delilah Bingle
Mr. Sean Bitz
Gary & Kaye Blackburn
Ms. Polly Blackburn
Carol Blacketer
John Bodine
David & Joyce Boeglin
Alli Bogunia
Jim & Rose Boland
Judge & Mrs. David R. Bolk
Blaine & Carrie Bolyard
Ms. Leigh Ann Bonnett
Joe & Cathy Booker
Mrs. Karen R. Borders
Jeff Boston Auction Service, LLC
Bradley & Susan Bough
Mr. & Mrs. Jerry Bowen
Karen Bowen
Mr. & Mrs. Don Boyce
Mr. & Mrs. Jack Boyce
Mr. & Mrs. John Boyce
Colonel H.A. Boyd
Ms. Mary Ann Boyer
Ms. Jacquelyn Bradfield
Mark & Katy Bradford
Nancy A. Bradford
Cheri & Dan Bradley
Mr. & Mrs. Arnold H. Brames
Brampton Brick, Inc.
Kevin Brandtonies
Courtney Braswell
Darrell & Nancy Bratt
George & Susan Brattain
Brazil Elks Lodge 762
Breakfast Optimist Club of Terre Haute
Kathy & David Brentlinger
Ms. Nancy Brentlinger
Stacy Bretlinger
Curt & Linda Brighton
Mr. & Mrs. Joseph Brill
Lori Shike Brill
Erin Brindley
Martha Brinton
James & Nancy Briscoe
DC Brown Farms – Elaine, Chad, Mary
Brown Jewelers
Doug & Judi Brown
Jim & Linda Brown
Mr. & Mrs. Robert F. Brown
Steve & Joni Brown
Steven & Staci Shike Brown
Brown, Woodsmall & Hinkel P.C.
Darice J. Brucker
Judge Barbara L. Brugnoux &
Mr. Carl L. Bender
Ms. Barbara W. Bryan
Denise J. Buck
Christine A. Buckley
Henry Buell
James Bugni
Bunch Nurseries
Jennifer Burden
Cameron Burdette
Mr. & Mrs. James L. Burdick
Burk Family – Shannon Shuler, Sheila & Kip
Clark, John Burk
Heather & Eric Burke
Kevin & Vicky Burke
Bryan & Heidi Burkhart
Gretchen Burkhart
Leo Burskey
Dr. & Mrs. Richard A. Butler
Butterfly Effect Clothing
Patricia Butwin
Cagle Heating & Cooling, LLC
Anthony P. Cahill, III
Charles Scott Cahill
Patrick & Mary Cahill
David & Molly Callahan
John & Margaret Callahan
Emma Campbell
Lauren Cann
Korinne Cantin
Joseph Card
Mrs. Sue L. Card
Carlisle Valley Irrigation, Inc.
Kasee Carlstedt
Barbara & Joe Carney
Ms. Sue L. Carol
Greg Carter
Camil Catlin
CenterPoint Energy
Ms. Patricia DeCoursey Cercos
Chances & Services for Youth
Sarah Chapman

Kelsey Chase
Michelle Chase
Kelli Cheever
Becka Chickadaunce
Marc Childs
Mr. Thomas Cierniak
Patricia H. Clark
Sherri Clark
Mrs. Elaine E. Clarke
Mrs. Susan Clarke
Aaron Clauss
Mary Ann Clem
David Clingan
Dawn Clinkenbeard
Mr. Mark Clinkenbeard
William Cobb
Matt & Beth Cohen
Marlene Collett
Timothy John & Macy Collett
Susie & Jim Colligan
Ms. Lois Collins
Mr. Michael W. Collins
Norma Collins
Patricia Collins
Colonial Landscaping &
Garden Shop
Commonwealth Engineers, Inc.
Debby Silvers Conn
Diana Ross Conner
Ms. Jane Conner
Ms. Tracy Cook
Mr. & Mrs. Robert A. Coons
Cops Cycling for Survivors
Foundation, Inc.
Mr. & Mrs. Thomas O. Corley
Corvee, Inc.
Carley Cottrell
Jerry & Katie Couch & Family
Lexie Coughanowr
Country Attic
Clark D. Cowden
April Cox
Cassie Cox
Cindy Cox
Cynthia Cox
Kathy Cox
Margaret Cox & Family
Michael & Charlene Cox
Ms. Sallie J. Cox
Emily & Edward Crapo
Lynn Crawford
Carl & Rebecca Creasey
Ms. Harriet Crews
Ms. Christina Crist
Jim & Beverly Cristee
Mark & Beverly Cronk
Dave Crooks of DLC Media
Mr. David L. Crooks
Dick & Verna Crooks
Janice N. Crosby
Crowe LLP
Nancy Cummins
Chuck & Kathleen Cunningham
Marcia Curran
John & Karen Curry
Ralph & Jan Cutter
Elizabeth & Mark Dailey
Mr. & Mrs. Ronald C. Danielson

Becky Davidson
Anita Davis
Dr. Emeline Taylor Davis
John Davis
Patrece Dayton
Ms. Randalou Herrington
Deacon
Britany Dean
Ms. Sue Deckard
Don & Peg Decker
Ms. Susan Decker
Cindy DeHart
John & Tammy Delph
Delta Theta Tau –
Kappa Mu Chapter
Mr. J.W. Dennis
Patricia Dennis
Dentistry Just for Kids &
TK Orthodontics
Mr. Brian DePasse
Dr. & Mrs. Rajendra S. Desai
Ann Dever
Tom & Laura Dever
DieBotics LLC
Patricia M. Dierdorf Farm Trust
Anne Ryan Dillard
Marsha & David Dillman
John & Rolanda Dinkel
Dr. Terry Dischinger
Divine Construction
Doug Dixon
Claudia K. Doan
Ms. Robinne Dodd
Don Dodson
James & Deborah Dodson
Christopher & Bridgett Doll
Barbara & David Donahue
Brian & Kim Doti
Mrs. Donna J. Doti
Rob & Mary Doti
Sonya Doty & Tim Doty, Sr.
Susan Doty
H. Doyle
David Drake
Bill Drummy & Jamie McDonald
Brian Drummy
Kathleen Drummy
Linda Riggs Drummy
David Dubree
Jeff & Amy Duell
Mr. & Mrs. Patrick L. Duffy
Duke Energy Foundation
Matching Gifts Program
Duke Energy Indiana, LLC
June Dunbar
Kevin Dunne
Ramani Durvasula
Erin Drummy Eades
Debbie Easter
Katherine Easthom
Randall J. Easton
John & Carol Eder
Edward Jones
Effner Family
Odessa Egge
Norm & Janie Elder
Judge & Mrs. Michael H. Eldred
Chris & Kathy Eliopoulos

Mr. & Mrs. Earl Elliott
Joseph Elliott
Chris & Jacqui Ellis
Christian Ellis
Deborah Ellis
Ms. Keela Ellis
Estate of Doris Marie Ellison
Dorinda Emberton
Melinda Emery
Mrs. Joyce Emmert
Ms. Kim Emmert-O'Dell
Ms. Nan A Engle
Alisa J. Ennis
EPIC Insurance Midwest
Eduardo & Heather Esper
Mr. Jeffrey Etling &
Dr. Miranda Goodale
John & Carol Pendergast Etling
Jason Evans
Lucas Evans
Ms. Judi Evelo
Brian & Julie Everhart
Teresa D. Exline
Margot Faught
Mr. & Mrs. Gary Faulkner
William D. Faulkner
Mary Fazekas
Mr. & Mrs. Patrick Fears
Becky Drummy Fehman
Janice Fellows
Cindy Felstow
Bill Fenoglio & Stephanie
Salter
Lisa, Kristen & Kylie Ferguson
Ferm Fresh LLC
Saul A. Fern & Phyllis Barmak
Sally & Charles Ferraro
Wanda Field
Jon S. Figg
Ms. Kim Figg
Scott J. Findley, DDS
Finzel's Mastertech, Inc.
First Christian Church
First Farmers Bank & Trust
First Financial Bank –
Sullivan County
First Presbyterian Church
of Sullivan
First Unitarian Universalist
Congregation
Mr. Robert J. Fischer
Mr. & Mrs. Steven Fleschner
Flooring America of Terre Haute
Followell Real Estate, LLC
Bob & Deb Folz
Mr. Thomas A. Foster
Mrs. Jeanne Fowler
Terry & Rebecca France
Mr. & Mrs. Richard T. Frank
Michelle Franklin
Mr. & Mrs. Bryan Frazer
Lana Frazier
Margaret Freed
Mrs. Susie French
Mr. Eric A. Frey
Ms. Karen Frey
Richard & Elisabeth Friedman
Dave & Janet Friedrich

Friendly Smiles Family
Dentistry, LLC
Dee A. Fulford
Robert & Norma Fultz
Michael L. Furgal
Bruce & Susan Furr
Marilyn & Dave Fuson
Mr. & Mrs. Mark Fuson
Rex & Doris Gambill
Mr. & Mrs. Jose P. Garcia, Jr.
Stephanie Gardner
Garfield HS Class of 1955
Garfield HS Class of
1965 Reunion
Garfield HS Class of 1969
Garmon for Life-Line
C. H. Garmong & Son, Inc.
Ms. Janet Garner
Mr. & Mrs. Tim Garrett
Neil Garrison
Ms. Brianne L. Gassert
Mike & Carla Gauer
Gavilon, LLC
Mary Catherine Gephart
Gerber Family: Laura, Lynne,
Nelson (Susan), & Monica
Mr. John J. Gettinger, Sr.
John R. & Polly Gettinger
Tom & Nancy Gettinger
Max & Jackie Gibson
Gregory Gibson Charitable
Foundation, Inc.
Max & Jacqueline Gibson
Foundation
Mrs. Patricia J. Gifford
Ian Gilbert
Douglas & Margot Gillespie
Ginther Siblings: Martha
Reinert, Frances Ginther,
Mary Ginther-Oss,
John Ginther, Fran Crawford,
& Father Rick Ginther
C. Girton
Givens Family
Janice Golish
Ruben & Ched Gonzales
Goodie House LLC
Citizens to Elect Greg
Goodnight
Ms. Donna M. Gorby
Martin & Wayne Gore & Family
Suzanne Gorgas
Ms. Sue Goshen
Lindsay Goetz
Great Dane
Donald Greathouse
Greggs & Reid CPAs PC
Mr. Kenneth Grigsby
David & Pamela Grimes
Andrea & George Grindstaff
Tomya A. Groth
Carey Gush
Dianne Hadley
Mr. & Mrs. Robert J. Hagemeyer
Kirsten Hagen
Bill & Beth Haley
David W. Hall
Ms. Linda Ham
Stephanie Hamilton

Kris & David Hancock
Hand Picked Cars
Kathleen Hanlon
Hannig Construction, Inc.
Tom & Sarah Hannon
David & Katherine Hannum
Mars & Susan Harlan
Mr. & Mrs. Brian D Harris
Cindy Harris
Mr. & Mrs. Kent Harris
Linda & James Harris
Don Harrison
Jason & Stacy Hartman
Mr. Andy J. Hatch
Ms. Jennifer Hatch
Judith Hatch
James Havens
Ann Hawkins
Courtney Hayes
Mike & Lynn Pendergast Hayes
Timothy R. Hayes
David & Nancy Haynes
Larry & Janet Hays
Brian Heaton
Mr. John Heck & Mrs. Sue
Borders Heck
Mrs. Marsha Hedrick
Karen & Rod Heefner
Pat & Jane Heeke
Mr. & Mrs. Todd Hein
Hannah Helman
Mr. & Mrs. Troy Helman
Troy & Suzanne Helt
Hendrich Title Company
Cathy & Merv Hendricks
Mr. & Mrs. R. Chris Herrington
Cindra Hiatt
Ms. Jerree Hiatt
Mary Ann Hicks Trust
Charles & Jenny Hine
Dr. Will & Betsy Hine
Maya Hinkin
Shanti Hinkin
Ernie Hisle
Leslie E. Hobbs
Jerry & Paula Hochstetler
Ms. Sharon L Hoffman
Judy & Terry Hogan
Kent & Debbie Holcomb
Holmes Memorial Chapel, Inc.
Erin Homburg
Hoosier Energy
Mrs. Margaret Hopkins
Janice Hough
Jeanne Howard
Mark Howell
Ward & Rosemary Hubbard
Mrs. Lynn V. Hughes
Hulman & Company
Foundation, Inc.
Mr. & Mrs. Donald C. Hunt
H. R. & Amber Hunt
Mike & Karen Hutchens
Randy & Debbie Hutts
HWC Engineering
Mrs. Virginia Lee Hyde
Barbara Igleheart
Independent Colleges of
Indiana, Inc.

Indiana American Water
Company
Indiana Bankers Association, Inc.
Indiana Laborers District
Council
Indiana State University
Foundation
Industrial Supply Company
Mrs. Joan L. Ingram
International Union
Operating Engineers
Local 841
Ann & Fred Isbell
Ms. Carol Isbell
-Ish Project LLC
Carol Isles
Mrs. Mari Jackson
Kara James
Deric & Mary Jaques
Tim & Sue Jarvis
Jay's Autoworld
Mr. Jason & Dr. Tara Jenkins
Maggie Jenkins
Diane & Randy Jensen
Susan Dinkel Jensen
Tamara Jercha
Mrs. Dorothy W. Jerse
Dr. & Mrs. Craig Johnson
Mr. & Mrs. Elmer Leon Johnson
Janean & Zack Johnson
Ms. Ruth E Johnson
Samantha Johnson-Helms
Sharron R. Jolly & Sammie D.
Robinson, II
Erica Jones
Mr. & Mrs. Max C. Jones
Patti Jones
Rex Jones
Tracy & Keith Jones
Ms. Stacy Joseph
Sydney Joyner & Tom McKone
Jeff & Elizabeth Jungers
Kat-a-Korner Diner, Inc.
Brendan & Sarah Kearns
Barbara J. Kellems
Tom & Lynn Kellett
Estate of Barbara Kelley
John & Jane Kelly
Larry & Sue Kelly
Ms. Mary L. Kelly
Kela Kennedy
Mr. & Mrs. Billy J. Kent
Jennifer Kenzor
Mr. Dennis Kerns
Louise Kerr
Clyde & Susie Kersey
John A. Kesler, II
Steve Kidwell
Ms. Stacy Killion
Cari & Wally King
Mike, Nicole, Tyler, Madison &
Abigail King
Scott & Stephanie Kinnett
Mr. & Mrs. Larry W. Kirchner
Kiwanis Club of Terre Haute
Rebecca "Becky" Klingele
Mr. Duane Klueh
Brenda Knedgen
Ms. Janella K. Knierim

Robert A. Knierim
Ms. Brenda Knight
John & Rita Knotts
Mr. & Mrs. Harold Knox
Melinda Knuppel
Mr. & Mrs. Michael D. Knust
Kristen Kosinski
David Kosko
Ms. Vicki Kosowsky
Chris & Phyllis Koszewski
Ted & Judy Kraly
Mallory Kraly
Linda I. Kramer
Ms. Mary E. Kramer & Mr.
Arthur B. Feinsod
Ms. Elizaeth A. Kult
Kevin Kumpf
Mary Jo Kunkel & Family
Gail & Konrad Kuta
L & J Drilling Services, Inc.
L & L Disposal, LLC
Mr. & Mrs. Terrance LaGrange
Committee to Elect Clint Lamb
LaPachanga
Rick Lasure
Sue Latham
Cary Laxer
Mark E. & Lisa Lee
Larry & Marilyn Leinenbach
Timothy Lenardo
Oni Leone
Bob Levy & Kathy Alexander
Dennis Lewis
Ms. Fraun Lewis
Mark Lewis
Sam & Jo Ligget
Ms. Sue C. Lightfoot
Phil & Jennifer Lincoln
Jane Linville
Ryan Liston
Cynthia Littlejohn
Mr. Jason Llewellyn
Mr. & Mrs. William Llewellyn, Jr.
Amanda Loebker
Ms. Anna R. Long
Debbie & Larry Long
Karen & Doc Long
Ms. Mary Long
Yvonne C. Longfield
Sarah Jane Lookabill
Teri & Kenneth Lorenz
Dave & LeAnna Lotter
Kathleen Loudermilk Family
Dr. Harold P. & Mrs. Theresa
A. Loveall
Laura Loveall
Mrs. Jacqueline L. Lower
Norm, Britt, Forrest &
Elizabeth Lowery
Norm, Sally & Christine Lowery
Allen & Shirley Lueking
Chris Lueking
Ms. Freda K. Luers
Mr. & Mrs. John S. Lukens
Linda Lutz
Anne H. Lynk
Jay Maddox
Keith Madley
Bill & Tina Maher

Avi Maisuriya
Kimberly Majewski
Pamela Malone
Gary & Wanda Mangum
Amy Mann
John & Deborah Mann
Marjorie Mann
Melissa Manzanares
Michael & Susan Mardis
Mr. Bruce R. Marheine
Cindy Martin
Steve Martindale
Andrea Mason
Connie Mason
Brenda Matuszkiewicz
Linda Maule
Jean Mausel
Larry & Patti Mayfield
Jhasen Mayo
Brandon McCall
Bob & Susan McCammon
Ray & Trudi McCammon
Mr. & Mrs. Conrad McCarthy
James & Kim McCarthy
Linda McCarthy &
Joseph Gadbois
Michael & Jill McCarthy
Michael & Martha McCarty
Robyn C. McCloskey
Jessie A. McCollum
Charles McCullaugh Charitable
Remainder Unitrust
Debra K. McCullough
Mr. & Mrs. Michael D.
McCullough
Rodney & Marla McDonald
Shirley McDonald
McGuire Excavating &
Trucking, Inc.
Jay & Elizabeth McHargue
Mr. & Mrs. Craig McKee
Dale McKee
Mrs. Elizabeth A. Mckee
McKinney Trash Disposal LLC
Mr. & Mrs. Robert E. McLaughlin
Katherine & Howard McLean
McMahan Law Firm
Brad McMahan
Don & Jean McMahan
Declan McMullen
Medical & Dental Staff of Terre
Haute Regional Hospital
Brock Medsker & Meg
Zurlage-Medsker
Harold & Malinda Medsker
Laney Meis
Louise Meneghini
Mrs. Judith C. Meng
Merom United
Methodist Church
Bill Merrill
Meg Merrill
Tom Merrill
Mrs. Linda Messmer
Milestone Contractors
South, LLC
Marylla & Don Millard
Brad & Connie Miller
Bradley T. Miller

Jean Miller
Rick & Kelli Miller
Ricki Miller
V. Miller
Mr. & Mrs. Joe Milner
Patricia J. Minnis
Miracle on 7th Street
Committee to Elect Ann
Smith Mischler
Matt & Ann Mischler
David C. Mitchell Trust
Geraldine P. Mitchell Trust
Jen Mitchell
A. Mitten
Raymond & Carol Modesitt
Mr. Donald E. Moffitt
Patrick & Carolyn Monaghan
Cindi Monds
Ms. Karla K. Monroe
Mr. John M Moore
Mr. Rondrell Moore
Mr. & Mrs. Harold E Morgan
Jerry & Elaine Morgan
Robert Morgan
Dustin & Rachel Morris
Mr. Gary Morris & Sharon
M. Polge
Mike & Linda Morris
Dr. & Mrs. John D. Morse
Mosaic of Terre Haute
Ron & Cora Moseman
Patricia Mozley
Eileen Muller
Rachel Mullinnix
Curtis & Jean Murden
Mary Anne Murphy Estate
Andrew & Jennifer Myers
Ms. Carol D. Myers
Bill & Joyce Myrick
Mr. & Mrs. Santhana Naidu
Dr. & Mrs. Peter M. Nalin
Ms. Aruna Namburi
Becky Nanney
Ms. Mary J. Nasser
Fred & Nancy Nation
Don & Gail Nattkemper
Emma Jean Neal
Erin Neff
Bradley D. Nelson
Dr. & Mrs. Gary Nesty
Ted & Anna Nesty
Charitable Trust
Mr. Fred Nevils
John S. & Kris Newlin
Morgan Newlin
Tom & Laurice Newlin
Todd & Maureen Newman
Chris & April Newton
Mr. & Mrs. John P. Newton
Next Step Foundation, Inc.
Mr. & Mrs. John Nichols
Marilyn J Nichols
Sally K. Nicklash
Nancy Lynn Nicoson Estate
Ms. Karen Noble
Roger D. & Martha J. Norman
Norris Scale Company, Inc.

Kathleen Norris &
David Hamblen
Northeast East Elementary
School Staff
Christopher & Kimberly
Novotney
Hollie & Anna Oakley
Foundation
Mrs. Marilyn R. O'Donnell
Marilyn Oehler
Ohio Valley Gas, Inc.
Old National Wealth
Management
Mark & Mary Oldham
O'Leary Families
Steven Olson
Patricia Ryan O'Neill
Rhagen O'Neill
Alyson O'Rourke
Ally & Jordan Orwig
Troy & Barb Orwig
Elizabeth Oshel
Ronald E. Overton
Mr. & Mrs. Dennis Pabst
Mr. & Mrs. Edward A. Pabst
Pacesetter Sports, Inc.
Emil & Janet Page
Ms. Kerri Page
Ms. Pamela G. Pangan-Varble
Donna Parsons
Drs. J. Laurence &
Barbara Passmore
Patrick's Restaurant &
Bowling Center
Jack & Sharon Pattison
Raymond Pavy
Forrest & Sharon Payne
Linda Bose Payne
Ms. Margaret J. Pearman
Mr. Edward A. Pease
Mr. Bradley R. Pell
Kathy Pell
Pell Roofing & Siding Company
Thomas & Laurie Pellett
Jerry & Jane Penry
John & Jean Penry
Mr. Alfred Perone
Patricia Peterson
Katy Petrin
Chad & Jen Petty
Pfister & Company, Inc.
Pfizer Foundation Matching
Gifts Program
Fredia L. Phillips
Leland Phipps
Jodi Pickens
Mr. Phil Pickett
James & Kathleen Pickrell
Judge & Mrs. P.J. Pierson
Mrs. Martha M. Pierson
Piety Farms
Pigg Implement Sales, LLC
Randy & Karen Pigg
David Piker
Matthew Piker
Jean & Dan Pirtle
Judy Pirtle
Dr. Sharon Pitts
Mr. John A. Plasse

Dr. Sara K. Pliskin
Plumbers & Steamfitters
Local #157
Mark Plungis
Paula Kay Ponsot
Ms. Carol A. Posey
Dianne Frances Powell
Doug & Donna Power
Mr. Joshua & Dr. Susan Powers
John Pratt
Precision Health Economics
Charlene Price
Janie Priola
Project Never Broken
Darrell & Karen Propst
Mrs. Eileen K. Prose
Jeff & Alice Prothero
Marshall Prothero
Kathy Prothero-Wleklinski &
Donald J. Wleklinski
The Prox Family: Jan Zwerner,
Joan Conard & Mary Oldham
Ann Prox
Robert & Mary Beth Prox
Alaina Pryor
Vincent & Marianne Puccia
Ms. Shefali Purohit
Lori Quinn & Phillip Fitch
Betty & Dennis Raetz
Mr. & Mrs. John G. Ragle
Patrick R. Ralston
John & Myra Reagin
Nickie Rearden
Mitchell Reberger
Mr. & Mrs. Thomas K. Reberger
Dr. V. Venkat & Judge
Lakshmi (Lucky) Reddy
Mr. & Mrs. Phil Redenbarger
Monte & Sandy Reece
Peter & Pamela Reed
Rachel Reed & Aaron Ranard
Reese & Kayte
Mrs. Emily Reeves
Mrs. Jackie Reeves
Mr. & Mrs. Randy Reinoehl
Reinvest Health
C. J. Rhoads Income Tax
Service
SC & K Rhodes
Doyce & Erin Rich
Laken Richardson
Lindsey Richardt
Riddell National Bank
Riddell National Bank – South
41 Branch
Town of Riley
Rio Grande Full Gospel
Church, Inc.
Mr. & Mrs. Philip D Rissler
RJL Solutions
Anthony, Ellen, Carson &
Jude Roberts
Terri & Doug Roberts
Brad Robertson
Chrissy Robertson
David & Hazel Robinson
Ms. Judith P. Robinson
Mancil Robinson
Timothy Robson

John Rockhill
Danny Rockwell
Chris & Michelle Rodgers
Earl C. Rodgers & Associates
Laura Rodgers
Mr. & Mrs. Jay Rodia
Don & Nancy Rogers
Mr. & Mrs. Mark A. Roman
Alissa Romas
Doris Romas
Mr. & Mrs. James Romas
Rose Hill Lawn Care –
Cary Albin
Krishna Rose
Donald & Norma Roseberry
Richard Rowe
Fred & Nancy Rubey
Mrs. Helen A. Ruhl
Norva Rumble
David & Pamela Runyan
Ernie & Marci Rush
Susan & Bob Rusin
Mildred "Mid" Rusk
Sharon Russell
Leah Rutenberg
Muriel Ryan
Sackrider & Company, Inc.
Sacopulos, Johnson &
Sacopulos Lawyers
Ms. Peggy Salitros
Sanders & Associates, Inc.
Bob & Holly Sanders
Sandhill Blasting & Painting
Jane Santucci
Ms. Martha A. Santus
Ms. Helen D. Sapp
Mike & Lynn Sargent
Jane Sargent-Jefferson
Mr. Connor Scanlon
Ms. Heather Schaefer
Mrs. Christine Schellenberg
Drs. Thomas & Norma Schmitz
Mr. & Mrs. Gary W. Schomer
Mr. & Mrs. Jones R.
Schonberger
Mr. & Mrs. Steve Schrohe
Mr. & Mrs. Kerry Schutt
Cathy & Bob Schwab
Jennifer Schwab
Roxann Scott
Ms. Corinne Scully
Mr. & Mrs. Mark M. Sebree
Harry & Rosaline Secrest
Mr. & Mrs. Kenneth &
Rita Senseman
Cecelia Seprodi
Brenda Shadow
Richard & Alice Shagley
Paige Shake
Amy Sharp
Ann Shagley Sharp & Elliott
H. Berger
Katherine Sharp-Evans
William Shassere
Rita Shearer
Mr. Bradley Shike & Ms.
Paula Fricchione
Dr. & Mrs. William Shriner
Sandie Siegelin

Jon Silver
 Ms. Glenna L Simons
 Darin & Tabitha Simpson
 Chip & Vanessa Sindors
 Darby, Cathy & Madeline Sindors
 Jana & Curtis Sindors
 Arnie & Patt Sklar
 Mike & Sue Slack
 Mrs. Carol Ann Sloan
 George & Anne Sly
 Kristin Smigielski
 Ann M. Smith
 Carolee J. Smith
 Ms. Dorothy J. Smith
 Greg & Dixie Smith
 Jim & Susan Smith
 Katy (Newlin) & Jeff Smith
 Mr. & Mrs. Lloyd T. Smith
 Michael Smith
 Ms. Stacey Smith
 Ms. Kelley Snyder
 Andrew Southard
 Dr. Erik P. Southard & Family
 Southwest School Corporation
 Cary & Paula Sparks
 Ann & Ron Speedy
 Springer Insurance & Financial Services, Inc.
 Robert E. Springer
 Springhill Oaks Development
 Katherine Sreniawski
 Henry & Natali Stadler
 Linda J. Stanley
 Staunton Alumni Association
 Staunton HS Class of 1966
 Mr. & Mrs. John Michael Steele
 Tammie Steele
 Steimel Communications, Inc.
 Dianne & Bob Stephens
 Mona & Rob Sternfeld
 Ms. Cheryl Steuerwald
 Bill & Sally Stewart
 Gary & Renee Stewart
 Stewart-Norris Post 197
 American Legion, Inc.
 Chris & Erika Stitzle
 Mr. & Mrs. Marty Storey
 Mr. & Mrs. Michael Strack
 Mr. & Mrs. Kenneth L. Strain
 Mr. & Mrs. Larry D. Stuckey
 City of Sullivan
 Sullivan American Legion
 Post #139
 Sullivan Automotive Group
 Sullivan County Abstract, Inc.
 Sullivan County Community Hospital
 Sullivan County Community Hospital – Rehab
 Sullivan County Farm Bureau, Inc.
 Sullivan County VFW, Inc.
 Post #2459
 Sullivan Dairy Queen

Sullivan Family Dentistry –
 Gregg W. Smith, DDS
 & Neil L. Smith, DDS
 Sullivan Family Eye Care, P.C.
 Sullivan Furniture, Inc.
 Sullivan HS Class of 1964
 Sullivan HS Class of 1973
 Sullivan Lodge 263 F&AM
 Sullivan Save-A-Lot
 Sullivan Wal-Mart
 Kanene Summers
 Tracy C. & Dolores A. Svendsen
 Robin Swalls
 Sweet P's Agape Cafe, LLC
 Dr. J. Matt Switzer
 Sycamore Engineering
 Tom & Patti Szymanski
 Ashley Tague
 Ms. Carolyn R. Tausig
 Bill & June Taylor
 Bryan & Peggy Taylor
 Ms. Cinda Taylor
 Sharon Taylor
 Somer & Troy Taylor
 Technifab Products, Inc.
 John Tempel
 Larry & Martha Tempel
 Templeton Coal Company
 Mr. & Mrs. David Templeton
 Mr. & Mrs. Richard Templeton
 Tom & Carol Templeton
 Jack & Lynn Tennant
 Mr. William Tennis
 Terre Haute Area Economic Development Corp
 Terre Haute Elks Lodge #86
 Terre Haute Tribune Star Employees
 Terry & Beth Tevlin
 The Hometown Savings Bank
 Mr. & Mrs. John B. Thomas
 Ms. Tracy Lynn Thomas
 Glenda Thompson
 Sandy Thompson
 Mr. & Mrs. Thomas Thompson
 Tom & Clara Thompson
 Ms. Patricia L. Thoms
 Karen Ann Tizer
 Mike & Jennifer Todd
 Tofaute & Spelman, LLC
 George & Wanda Tofaute
 Carol Tolin
 Bob & Nancy Tomey
 Ruth Ann Tooloose
 Tourism Commission of Sullivan County
 Tourville Family
 Jan Townsend
 Sue Treadway
 Mrs. Sandra Treaster
 Treece Family
 TREES, Inc.
 Elizabeth & Michael Trench
 Mr. & Mrs. James D. Tribble

John & Arlene Tribble
 Mrs. Janet Love Trout
 Chris & Jenny Tucker
 Ellen Tucker
 Katherine (Kasha) Tucker
 Tom Tucker & Sheron Dailey
 Shannon Tuczak
 Michael Turner
 Mr. & Mrs. Robert Turner
 Mr. Ryan A. Turner
 Wade S. Turner
 Elizabeth Tuttle
 James & Jennifer Tyler
 Jonathon Unger
 Ms. Mildred Unger
 Union Health, Inc.
 United Steelworkers of America, Local No. 7441
 Mr. Edgar Utterback, III
 Valley Tile, Inc.
 Milt & Suzanne Van Reed
 Mark & Barbara VanMeter
 Allen & Gerri Varner
 Melissa Vickers
 Vigo County Association of Actual Past Masters
 Vigo County Education Foundation
 Vigo, Parke, Vermillion Medical Society
 Vigo Superior Court, Division 4 Staff
 Visiting Nurse Association of the Wabash Valley
 Visiting Nursing Association of the Wabash Valley Staff
 Erin Vitz
 Mrs. Barbara A. Vogel
 Mr. & Mrs. Matthew J. Voll
 Mr. & Mrs. Patrick J. Voll
 Wabash Valley Community Foundation
 Wabash Valley Correctional Facility
 Wabash Valley Goodwill Industries, Inc.
 Wabash Valley Health Center
 Wabash Valley Herb Society
 Wabash Valley Mechanical Contractors Association
 Rosalee Wade & Karl Schmuecker
 Jerome F. Wagner
 Bari Wald
 Jana Kraly Walker & Family
 Patrick & Grace Walker
 Gina Walls
 Marie Walsh
 Watts Farms
 Ms. Cynthia Watts
 Ms. Laura L. Waugh
 Mrs. Eula M. Webb
 Barbara & Daniel Weber
 James T. Webster
 Geg & Patti Weinheimer

Daniel L. Welch, Building Contractor
 Mrs. Susan Welch
 Chuck & Roberta Weliever
 Charles & Kim Welker
 Stephanie M. Welsh & Garrett A. Pendergast
 Anita & Don Westerfield
 Western Indiana Community Action Agency, Inc.
 Western Indiana Credit Union
 Western Indiana Workforce Development Board, Inc.
 Weston Wabash Foundation
 Wheeler's Screenprinting
 Ms. Anna M. White
 Christina S. White
 Hilary White
 Thomas & Rebecca White
 Tom & Sally Whitehurst
 Mrs. Nancy Whitlock
 Mr. & Mrs. John W. Whittington
 Wildlife Land & Resource Management, LLC
 Myra Wilkey
 Mr. & Mrs. B. Curtis Wilkinson
 Wilkinson, Goeller, Modesitt, Wilkinson & Drummy, LLP
 Bert & Patty Williams
 Jerry & Brenda Williams
 Pam Rukes Williams
 Steve & Carol Williams
 Mr. & Mrs. Bruce Willis
 Carolee Willoughby
 Trudy Wilson
 WIN Energy REMC
 Mr. Curtis A. Winkle
 Elizabeth & Gary Wolfe
 Woman's Department Club of Terre Haute, Inc.
 Brent & Mary Susan Wood
 James & Jane Wood
 Jamie Woodruff
 Sarah Woodworth
 Wright Salvage LLC
 Ann Wright
 Bob & Cheryl Wright
 Mr. & Mrs. David K. Wright
 Wright, Shagley & Lower, P.C.
 Thomas Wright Foundation
 Norah June Wriighthouse
 Michael & Lisa Yeager
 Ernest & Mary Yelton
 YMCA of the Wabash Valley
 Ashley Young
 Mr. & Mrs. David Zaub
 Sally Zuel
 Josh & Paige Zuerner

Responding to Urgent Needs

The Community Foundation is here For **good**. For **ever**[®], which means not just during our regular grant cycles!

Each summer, the Clay County 4-H Council hosts its annual 4-H Fair to provide real-life educational opportunities for young people who will have a positive impact on their communities. Last summer, the air conditioner in the Exhibit Hall at the Clay County Fairgrounds started leaking freon and failed to cool the building days before the start of the 2022 Fair. The Exhibit Hall provides project displays, visitors and exhibitors a reprieve from the July heat, and serves as a temperature-controlled space to hold fundraisers throughout the year. The Clay County 4-H Council needed a quick solution.

The Council applied to the Community Foundation for an urgent need grant to thaw the unit, add refrigerant, change all filters and replace the faulty capacitor. The urgent need grant of \$442 provided by the Community Foundation allowed for the repair of the air condition system in time for the Fair, allowing fairgoers to enjoy the fair comfortably.

The Community Foundation offers urgent need grants to organizations with a critical, immediate need. To learn more, visit our website at wvcf.org.



Clay County 4-H Exhibit Hall

Honoring Our Veterans

Wreaths Across America (WAA), in conjunction with the Eliza Rizley Stacey Chapter of the National Society of the Daughters of the American Revolution (NSDAR), works each year to place wreaths on the headstones of fallen veterans across America.

In late 2021, the Community Foundation had the opportunity to honor our fallen veterans through a \$300 grant to WAA. This grant allowed the affiliation to reach its goal of placing 300 wreaths at Calcutta Ceremony in Clay County. On December 18, a ceremony was held to place the wreaths and commemorate the beginning of a tradition with WAA.



Wreaths Across America

Memorials & Tributes

Memorials

Dolores Able
Denzil Adams
Shirley B. Adams
Sue Adams
Larry & Linda Akers
Karen Alumbaugh
Lois Andrews
Dr. Bruce P. Anshutz
Leonard S. "Steve" Arnold
John L. Asbury
Elizabeth Ann "Betsy"
Balcavage
Thomas "Tom" C. Barnett
Marianna Beal
Jim Behem
Ralph & Marie Behem
Ralph Behem, Jr.
Cynthia "Cindy" Belt
Gary E. Bennington
Sue Bentrup
Betty Blann
Henry Bobe
Mrs. Alexander Bobovich
Judith Bond
Dr. Noaman Botros
Marilyn Bott
Ashley Laughlin Felstein Boyll
Gerald Lee "Jay" Boyll, Jr.
Charles F. Bradford
John Coyt "JC" Brough
Christopher "Chris" K.
"Brownie" Brown
E. Verne & Mary Lou Brown
Ann Jones Burch
Ben Burdick
John Patrick Burdick
Gerri Burskey
Leonard & Mildred Busiere
Sister Cathy Buster, SP
Dorothy & Tony Cahill
Laura Callahan
Paul E. Campbell
Karl "Karl" Certain
Pauline & Andy Cherry
Joan T. Chervencko
Jennifer (Rusin) Cole
Roselyn Gertrude Dede
Coverstone
Corine Cowden
B. Guille Cox
Donald Wilson Cox
Grace Collins Creasey
Jack & Alvena Crosby
Charles "Chuck" T. Culp
Renous & Myrtle Dalton

Alexander Lee Davis
Randall "Randy" Lee Denham
Polly Mascari Donnelly
Ralph & Helen Dowell
Lillian A. Drummy, RN
Dr. William W. Drummy
Mike Duggan
Peter Anthony Duong
Franklin Durniat
Ed & Amy
Mildred R. Edwardson
James Eifert
Violet Rose Elkins
Sam J. Emmert
Billy E. Erney
Arthur "Art" William Eslick
John C. Esperson
Tom Ewing
Family & Friends
Nancy Farr
Jim & Marie Favre
Det. Greg Ferency
Julie Figg
Michael Fox
Dr. Charles "Chuck" French
Richard Friedman
Heather Frye
Virgil & Marie Fultz
Wandell Gabey
John D. Gifford, Sr.
Chris Gilbert
Jeffrey "Jeff" L. Gindhart, Sr.
Jeff Glasgow
Scott Glasgow
Muriel Glidden
Dick B. Godfrey
Dan Gossage
Mike Gosselin
Margot "Meg" Grandier
Charles Edward Gratzler
Sgt. Dale Russel Griffin
Curtis & Melissa Grigsby
Catherine "Cathy" E. Grimes
Robert E. Gross
Edith "Edie" Gummere
Frank A. Guthrie
Dallas Hadley
Arthur "Art" Hagan
Bradley "Curt" Hale
Brent Patrick Hamblen
Arnold "Lee" Hannum
Otto "Ron" Harms
Kennan Harris
Marian Harrison
Cheryl Hart
Jim Hartman

James Eddy Hatch
Leonard Hathaway
Donald Lee Hawk
Harvey H. & Mildred Hayhurst
Charles Carter Hedrick
Carol J. Helman
Ernest "Ernie" Hires
Mary Ellen Hlatko
Alyce R. Hochhalter
Alyssa Mechelle Hogue
Gary Holmes
Edward "Ed" S. Howanec
Leroy Howes
Gertrude Hubbard
Warren Hubbard
Catherine Burns Hudson
Patrick A. Hunkler
Jack Earl Hunt
Jon Jeffrey Hunt
Bill Jaeger
Jeff Jenkins
Daniel Jesko
Richard "Rick" Jewett
Drake Johnson
Elmer & Jessie Johnson
Bob Jones
Janice E. Jones
Joe & Marcella Jones
Thomas & Charlotte Jones
Jack Joyce
Kate & Terry
Kathy
Catherine "Cathy" Roysse Kelly
Mark Kelty
Mike Kelty
Lida Kerlin
Sherry Kidwell
Judy King
Jill Kintner
John "Joe" Joseph Kleptz
Kathy Knox
Roxine Koenig
Arnold Jay Kosofsky
Jack Krumreich
Frank Kuta
Scott Michael Kyrouac
Patricia "Pat" LaGrange
Don E. Lankford
Donald Laskowski
Lenne, Lundstrom, Kelly,
& Sheldon Families
Janice Lewis
Edward Lindsey, Sr.
Kathy A. Lively
Mary Margaret "Peggy"
Llewellyn
Joe Lohse

Austin Long
Kathleen Loudermilk
G. Michael Loveall
Brian Donald Lowder
Jack Lower
Jean Lowry
William & Beverly Lutz
Phung Sanh Do Ly
John & Joan Lyttle
Julia Jean "Judy" Magruder
Robert & Bonnie Mangum
Ashley Randolph "Randy"
& Lori Anne Mansard
Pat Mansard
Bob Maynard
Jane & Wayne Maynard
Tom McCarthy
Samuel J. McCollum
Charles "Chuck" K. McCrory
Mary Louise McCullough
Laura Brooke McDonald
Dale F. McKee
Edward "Dean" McKinney
Dennis Edward Meng
William "Bill" Meng
Dr. Jean P. Mercho
Tom & Lucille Merrill
JoAnna Metzger
Dennis Michael
Donald Mier
Forest & Julia Miller
Shane Miller
Traci K. Miller
Kelli Mishler
Charles Mitchell
Geraldine "Jerry" Penman
Mitchell
Jon Frederick Modesitt
Julia "Judy" Ann Monday
Carol Monroe
Steve Monts
John W. Moore
Don Morris
Mary Louise Morris
Glen & Mary Moseman
Professor Edward A. Mottel
Marvin & Murelann Mucha
Brenda Myers
Glen Myers
Phyllis Templeton Myers
Stanley & Evelyn Naliborski
Dan Nasser
George N. Nasser, III
Otto G. Nasser
Harry E. Nelson
William & Imogene Nelson

Velma Lucille Newton
 Steve Nicoson
 Barbara Norman
 Pat & Randy O'Leary
 Phyllis Pabst
 Mae C. & Jack H. Page
 Dr. Margaret Pappas
 Parents
 Ronnie K. Payne
 Kathy Paynes
 Norma Pearson
 Peg Perigo
 Jenna Kay Perrelle
 James & Hazel Piety
 Jennifer Jean Piker
 Richard A. Pirtle
 Officer Rob Pitts
 Martin Plascak
 Steve Posey
 Jeanne Reeder Potts
 Dr. David Andrew Pressley
 Mitchell Price
 Donald "Don" E. Pruett
 Natalie A. Pugh
 Robert "Bear" M. Quain
 Cindy F. Readinger
 Jeffrey "Jeff" Keith Redman
 George A. Richardson
 D. J. Roberts
 Judith Ann Robinson
 Larry Robinson
 Russell & Mildred Rockwell
 Maryanne Roehm
 Camden Scott Romas
 Rachel Marie Romas
 Alexis Rusin
 Brad Rusin
 Donald Rusk
 Gus Sacopulos
 Bob & Olive Sanders
 Oscar Sanders
 Garrett Sands
 Todd Schauwecker
 Robert "Bob" F. Scott
 Juliann "Julie" Seal
 Dessie Sears
 Ralph E. Servie
 Candace "Candy" Shagley
 Emily Shagley
 Henry Monroe Shagley
 Hazel Sherer
 Edward S. Shew
 Gene Shike
 Tom Silcock
 Margaret Simonson
 Elizabeth "Betty" Sims
 Dr. Rose Sison
 William "Bill" Smiddy
 Jack E. Smith
 Kenneth F. Smith
 Thomas Smith
 George E. "Brother Jed" Smock
 Donna & Robert Snedeker
 Robert Timothy Snedeker
 Janet Somenzi
 Ken Somenzi
 Louise Sommers

Jerry G. Sparks
 Tina Marie (Buckley) Stanley
 Kristin E. Steele
 Leslie Erin Steigmeyer
 Billie Sue Stepp
 Dr. Randy Stevens
 Pearl "Pauline" Steward
 Susan Brown Stewart
 Karen Stievenart
 Victor C. Stievenart
 H. Ingrid Stoelting
 Freida Stokes
 Earl & Betty Strain
 Rev. Elmer & Mary Strain
 Janice L. Specker Stultz
 James L. Swift
 Vicki Switzer
 Cameron Joseph Taylor
 Carolyn Taylor
 Thomas "Tom" E. Templeton
 Marci Gropp Tennis
 John & Ruth Thomas
 Andrew Thompson
 Martha "Marty" L. Thompson
 Rex. E. Thompson
 Bill Thoms
 Marie O'Connell Thoms
 William Thoms, Jr.
 Judy Thrift
 Patricia Ann Lindsey Tickner Tomes
 Dale Tooloose
 Don Tooloose
 Christopher Trench
 John Trench
 Shirley Toney Tucker
 Edward "Ned" T. Turner
 Howard & Euleta Turner
 Bill Unger
 Clifford D. Unger
 Steven Randy Unger
 Twila Usrey
 Peter Varda
 Pamela "Pam" Lynn Vicars
 Linda K. Vickers
 Vietnam Vets
 Bob & Florine Voll
 Robert "Bob" Warren
 Anna Watkin
 Paul & Doyne Weir
 Raymond P. Weir, Jr.
 Kristine Sue Weliever
 Thomas "Tom" Ray West
 Marilyn Wheeler
 Allan Whitlock
 B. Curtis Wilkinson
 William E. Wilkinson
 Jess & Donna Williams
 John Williams
 Wayne Willoughby
 Barbara Jane Wilson
 Thomas & Alma Wilson
 John Preston Woelfle
 James "Jim" Wood
 Kimberley Jeanne Fowler Wulf
 Karla Wynn
 Sally Zuel

Tributes

Nancy Bradford
 Alyssa Brough
 Terri Brough
 Dick & Linda Brown
 Doug & Judi Brown
 Levi & Kendall Brown
 Melissa Brown
 Scott & Kelly Brown
 John Cristee
 Mildred Edwardson Family
 Orval Finch
 Michelle Hein
 Mrs. Hiatt's 3rd Grade Class at Carlisle
 Chris Hogue
 Brianna & Ryan Hubble
 Morgan Hughes
 Industrial Supply Company & Employees
 Wayne Jackson
 Randall "Randy" Jensen
 Jessica & Georgi Kamacharoz
 Lina & Rusty
 Harold & Malinda Medsker
 Rondrell Moore
 Linda & Mike Morris
 Rachel Mullinnix & Joseph
 Cartwright on their marriage
 Nicoson Family
 Curt Oehler
 Rick Shagley on 50 years of legal service
 to the Wabash Valley
 Charlotte Taylor Shike
 Carolyn G. Steinbaugh
 Zachary Tate
 Larry & Martha Tempel
 Kirsten Warner on her birthday
 Stephanie Welsh on her birthday
 Tiffany & D.J. Yarbrough

The Legacy Society

Caring for Animals was Her Passion and Her Legacy

Saving one animal will not change the world, but it will change the world for that one animal. Displayed above the reception desk at the Clay County Humane Society shelter, that motto voices the calling of people who work there and support it. Patsy Dierdorf, a lifelong resident of Clay County, heard that call and answered it throughout her life – quietly and in her own way.

Saving one animal will not change the world, but it will change the world for that one animal.

“She would always ask, ‘What do you need at the shelter?’” said Patty Dulin, a long-time volunteer of the Clay County Humane Society. “Caring for animals was her passion.” Dulin described Dierdorf as quietly supportive, private, unassuming and non-pretentious, but always there when the need arose. When friends of the shelter heard of her generosity, Dulin added, “It wasn’t a surprise.”

The real surprise, however, was when volunteers learned that Dierdorf included provisions in her estate plans to generate support for her beloved organization for years to come. Dierdorf first reached out to the Community Foundation in 2013 after hearing how friends had utilized its services to support organizations near



Clay County Humane Society

and dear to their hearts. Hoping to achieve a lasting impact, Dierdorf created a permanent endowment through her estate plans for the benefit of the Clay County Humane Society.

After Dierdorf's passing on March 29, 2019, funding from her estate helped to establish the Dierdorf Fund for the Clay County Humane Society within the Community Foundation. Her final wishes included a stipulation stating the funding may not be used to pay salaries and the shelter must remain a "No Kill" shelter, euthanizing only animals that are ill or dangerous to society.

"We are a no-kill shelter," explained Toni Carter, Board President of the Clay County Humane Society. To the board and staff, the policy is the right thing to do. While it can create pressure on their facility when adoptions are going slowly or in peak breeding seasons, it will continue to be their policy.

Carter shared that as a no-kill shelter, they incur about \$5,000 a month in veterinary bills. With 75% percent of the shelter's annual operating budget coming from fundraising and donations, Dierdorf's support will make life better for the shelter animals waiting for their forever homes.

In 2022, the Humane Society received the first distribution from the Fund in the amount of \$33,697. Through this permanently endowed fund, the Clay County Humane Society will receive a similar amount each year forever.

Giving Tomorrow

Do you want your dreams for the community to **live on forever**? Consider making a charitable contribution through your estate plans! Through a bequest or beneficiary estate gift, the assets you protected for use during your lifetime become available to create a lasting legacy in the community.

By entrusting gifts to the Community Foundation, you can be assured your contributions will be used wisely to address future community opportunities and that your personal legacy will be extended far beyond your lifetime. Our experienced staff is available to offer strategies to help you and your professional advisers plan today for a gift tomorrow.

If you have already made plans to include the Community Foundation in a planned gift – bequest, trust, life insurance or retirement assets – we invite you to inform us of your plans and join The Legacy Society. The Legacy Society recognizes those individuals who have chosen to leave a lasting charitable legacy by including the Community Foundation in their will, trust or estate plan. Often, these meaningful gifts go unrecognized because they come at the end of an individual's life. The Legacy Society memorializes and honors those who have included the Community Foundation in their estate plans. It is our way of acknowledging your commitment to creating a better tomorrow – today.

Legacy Society Members

We are grateful to those who have chosen to include the Community Foundation in their estate plans, and gratefully acknowledge their commitment to building a better future for the Wabash Valley.

Richard and Veada Akers*
Daryl Andrews
Lois A. Andrews*
Anonymous
Roy Barnhart*
Anonymous*
Margaret Halleck Blair*
Frank Bledsoe*
Walter Bledsoe*
Katherine Bledsoe-Aherns*
Charlotte Boener*
Anonymous
William* & Judith Brett
Barbara Brugnau & Carl Bender
Virginia R. Buntain*
Dana Burton*
Pat & Mary Cahill
Anonymous
Mary Ann Carroll*
Anonymous
Nancy Crowder Cochran*
Judge Silas Coffey*
Clarabelle Conklin*
James Conner
Erna Lucille Cox*
Marian & Victor Danek*
Anonymous
Anonymous
Edmund J. Dede*
J. W. Dennis
Patricia "Patsy" Moran Dierdorf*
William W. Drummy
Wilma Eckerty*
Mrs. Jerry Einsteadig
Janice Fellows
Allen & Millie Felstein*
George & Rose Felstein*
Barbara Fenton*
Maurine Gambill*
Sara Lou Joelson Garrard*
Anonymous
Virginia M. Ginter*

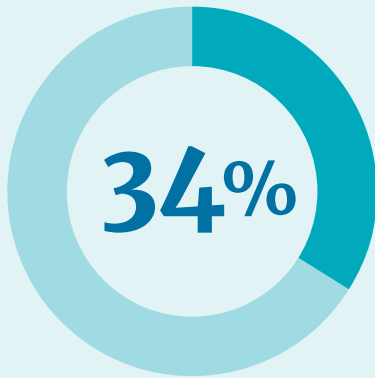
Lavelda M. Goble*
Nancy O. Graham*
Harry & Rosemary Grandey*
Mildred E. Harbison*
Charles Harlan*
Hermine Haslem*
Jessie Hickman*
Mary Ann Hicks*
Helen E. Hixson*
Anonymous
Anonymous*
William Robert Huff*
Jeff & Shelley Hyatt
Rudolf Jacobsen*
Eileen Stith Jensen*
Betty Jones*
Barbara J. Keller*
Barbara R. Kelley*
Walter Kindrick*
Jenny Kloer
Duane & Mary Alice Klueh
Endowment Fund
Carol M. Starkey Kochell*
Gail Kuta
Esther Ruddell Ladson*
Helen M. Lemry*
Anonymous
Harold P. & Theresa A. Loveall
Jacqueline Lower
Louie Lucas*
Bruce Marheine
Marvin* & Sharon Mattison
Charles M. & Melba Boone
McCullaugh Trust
Norma G. McNeill*
Harold and Malinda Medsker
Guido and Barbara Meischer*
Norman Mendenhall*
Bradley T. Miller
Hazel Miller*
Rolene Moore*
Sharon Haas Nelson

Ted and Anna Nesty*
Jack Newman
Nancy Lynn Nicoson
Evelyn Peterman*
Jacqueline H. Phillips*
Anonymous
John & Myrtle Price*
Anonymous
Jack & Joann Ragle
Waneta R. Rector*
Ron Reeves*
Helen C. Rentschler*
Jesse and Martha Reynolds*
Reid & Nina Ross*
Fred & Nancy Rubey
Roberta L. Sackrider*
Gary W. & Judy A. Schomer
Anonymous
Dedia Sexton*
Cuthbert J. Sherman*
Jesse Sherwood*
Anonymous
Carl A. Smudde*
Ralph Spelbring
Randy* & Debbie Stevens
June K. Swango*
Anonymous
Terry & Beth Tevlin
Hazel Travioli*
Everett & Fern Tucker*
Howard & Norma Unger
Anonymous
Richard C. Vining
Chris & Melinda Wall
Gwendolyn Wernsing*
Anonymous
Coriene White*
Earl & Pam White
J. Scott & Armeen Williams
Anonymous

* Deceased

Leaving A Legacy

Contact the Community Foundation at **812-232-2234** to learn how you can leave a legacy!



of donors
**LEARNED ABOUT
REQUESTS** from
their charities.



1 in 10

donors **TOLD THEIR
CHARITIES** about
requests in advance.



of Americans
do not have an
UP-TO-DATE WILL.



44

THE AVERAGE AGE
when a will is created.

TOP 3 REASONS WHY PEOPLE LEAVE REQUESTS:

- 1** Importance of cause.
- 2** Belief that nonprofit organizations make a significant impact.
- 3** Ability to make larger gift through estate than during lifetime.

85%

of all planned gifts are **REQUESTS.**

The **AVERAGE** request in the U.S. is

\$40,000-\$60,000

\$0

The cost during a **DONOR'S LIFETIME** to include
the Community Foundation in his or her will.

Financial Overview

Statement of Financial Position

September 30, 2022

Assets		2022
Cash	\$	749,865
Investments		75,936,683
Property and Equipment, Net		835,656
Cash Surrender Value of Life Insurance		113,368
Other Assets		11,888
	Total Assets	\$ 77,647,460

Liabilities and Net Assets

Liabilities

Accounts Payable and Accrued Expenses	\$	3,109
Scholarships and Grants Payable		1,914,508
Agency Endowments		3,448,500
Mortgage Payable		455,927
Other Liabilities		3,615
	Total Liabilities	\$ 5,825,659

Net Assets

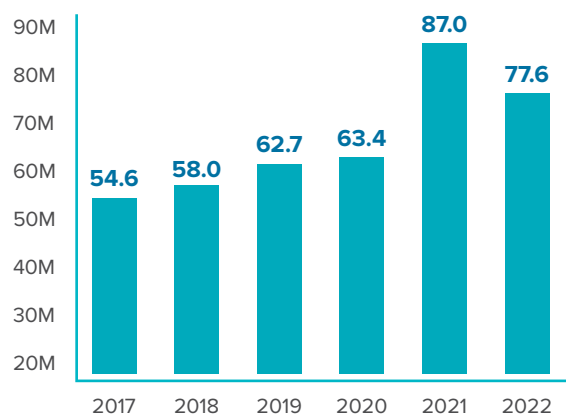
Without Donor Restrictions	\$	68,798,551
With Donor Restrictions		3,023,250
	Total Net Assets	\$ 71,821,801
	Total Liabilities and Net Assets	\$ 77,647,460

Statement of Activity

September 30, 2022

	Without Donor Restrictions	With Donor Restrictions	TOTAL
Support, Revenues, and Other			
Contributions and Grants	\$ 7,837,940	\$ 0	\$ 7,837,940
Investment Return, Net	(12,428,270)	(540,528)	(12,968,798)
Administrative Fees	1,128,588	0	1,128,588
Change in Cash Surrender Value of Life Insurance	(14,392)	0	(14,392)
Miscellaneous Income	34,979	0	34,979
Net Assets Released From Restrictions	230,733	(230,733)	0
Total Support and Revenues	\$ 3,210,422	\$ 771,261	\$ 3,981,683
Expenses			
Program Services	\$ 4,146,339	\$ 0	\$ 4,146,339
General and Administrative	442,633	0	442,633
Fundraising	214,593	0	214,593
Total Expenses	\$ 4,803,565	\$ 0	\$ 4,803,565
Changes in Net Assets	\$ 8,013,987	\$ 771,261	\$ 8,785,248
Net Assets, Beginning of Year	\$ 76,812,538	\$ 3,794,511	\$ 80,607,049
Net Assets, End of Year	\$ 68,798,551	\$ 3,023,250	\$ 71,821,801

Total Assets



Assets By Fund Type

Advised	\$4.1M
Community Grant	\$22M
Field of Interest	\$4.6M
Scholarships	\$22.3M
Designated and Agency Endowed	\$20.4M
Operating	\$3.8M
Special Project	\$0.4M



Boards & Staff



Wabash Valley Community Foundation Board

Sally Zuel, *President*

Santhana Naidu, *Vice President*

David Doti, *Treasurer*

Bob Brown, *Secretary*

Jim Conner

Lea Anne Crooks

Brian Dougherty

David Friedrich

Troy Helman

Summer Long

Stacy Mason

Carrie Page

Dee Reed


Jim Tribble

Gary Ulrich



Remembering Sally Zuel

January 26, 1953 – August 30, 2022



On August 30, our Wabash Valley Community Foundation Board President, colleague and friend, Sally Zuel, peacefully passed away at her home. Sally was a remarkable human being – a vibrant,

kind and passionate leader who devoted her life to others and had a profound, positive impact on the many lives that she touched.

The Community Foundation is fortunate to have had Sally's outstanding leadership, friendship, guidance and wisdom for almost ten years. In 2009, she began volunteering on the Community Foundation's Vigo County Scholarship Committee. Five years later, she joined the Wabash Valley Community Foundation Board.

She served a 2-year term as vice president of the Board before beginning her 2-year term as president in September 2020. Sally was also actively involved on the Community Foundation's Distribution Committee, serving as its Chair for four years and on the Governance & Planning Committee. Under Sally's leadership, the Community Foundation completed its 2022-2027 strategic plan. Sally will leave a lasting legacy in our beloved community and will forever be missed.



Staff

Front, left to right: Amy Naidu, *Controller* | Beth Tevlin, *Executive Director* | Tess DeHart, *Program Associate*

Back, left to right: Kelli Miller, *Program Director* | Jonathan Eilbracht, *Engagement Officer – Clay County* | Harmony Walsh, *Engagement Officer – Sullivan County* | Alaina Burton, *Director of Communications* | Ruth Hallam, *Executive Assistant*

Sullivan County Community Foundation Board

Ally Orwig, *President*
Jim Conner, *Vice President*
Sarah Hannon, *Secretary*
Gretchen Burkhart
Cynthia Cox
Amber Hunt
Janice Knotts
Bruce Marheine

Patti Mayfield
Bob McCammon
Jean McMahan
Malinda Medsker
Carrie Page
Donna Power
Neil Smith

Clay County Community Foundation Board

Summer Long, *President*
Henry Buell, *Vice President*
Jim Tribble, *Secretary*
Darla Frisz
Jon Hendrich
Ryan Keller

Martha Knox
Conrad Koehler
Anna Long
Teresa McCullough
Jerry Morgan
Chris Rodgers

Committees

Distribution

Sally Zuel, *Chair*
Greta Gard
Elizabeth Jungers
Santhana Naidu
David Piker
Becky Smith

Facilities Committee

Brian Dougherty, *Chair*
Troy Helman
Jon Hendrich
Randy Hutts
Jim Tribble

Governance & Planning Committee

Santhana Naidu, *Chair*
Bob Brown
Gretchen Burkhardt
Jim Conner
Lea Anne Crooks
Jo Einsteadig
Summer Long
Sally Zuel

Marketing Committee

Dee Reed, *Chair*
Diane Frances Powell
Kristan Williams
Meredith Williams

Investment Committee

Andy Hendricks, *Chair*
Bob Brown
Jim Conner
David Doti
Jason Ernst
Ward Hubbard
Brian Kooistra
Summer Long
Mark Wright
Sally Zuel
James Ross, *Mason Investment Advisory Services, Consultant*

Personnel Committee

Lea Anne Crooks
Summer Long

Scholarship Committee – Clay County

Darenda Dyer
Anna Long
Jerry Morgan

Scholarship Committee – Sullivan County

Cynthia Cox
Bruce Marheine
Neil Smith

Scholarship Committee – Vigo County

Derek Hannahs
Kim Ingalsbe
Gary Ulrich

30th Anniversary Committee

Jim Conner
Anna Long
Santhana Naidu
Diane Francis Powell
Dee Reed
BJ Riley
Rick Shagley
Terry Tevlin
Kristan Williams

Terre Haute Day Nursery Committee

Mary McLaughlin, *Chair*
Cindy Abel
Buddy Berry
Nancy Brentlinger
Jo Einsteadig
Susie Kersey
Jacqueline Lower
Tina Maher
Kathy Miller
Mary Lou Skinner
Joan Zaun

Clay County Youth Grant Committee

Caden Bettenbrock
Makenna Blankenship
MarLee Blankenship
Clay Brown
Lainy Buell
Vivian Etling
Karsyn Kitka
Kaylee Miller
Callie Ream

Christian Roembke
Addie Schopmeyer
Abigale Shearer
Sophie Stallcop
Logan Stoelting
Connor Tucker
Emma Whitman
John Hendrich, *Volunteer Advisor*
Conrad Koehler, *Volunteer Advisor*
Summer Long, *Volunteer Advisor*
Rochell Reberger, *Volunteer Advisor*

Vigo County Youth Grant Committee

Charles Conner
Theodore Conner
Maci Easton
Grace Foltz
Ellie Goodwin
Sadie Herring
Addyson Jackson
Baylee Jackson
Graham Palmer
Katherine Pfaff
Cassie Roush
Van Ruekcert
Bryce Statler
Andrew Theisz
Kayleigh Olah, *Volunteer Advisor*

Staff

Beth Tevlin, *Executive Director*
Alaina Burton, *Director of Communications*
Tess DeHart, *Program Associate*
Jonathan Eilbracht, *Community Engagement Officer – Clay County*
Ruth Hallam, *Executive Assistant*
Kelli Miller, *Program Director*
Amy Naidu, *Controller*

Interns

Gabby Burkhart, *ISU*
Abigail Grange, *IU*
Natalie Mauk, *ISU*
Emily Thornton, *SMWC*
Rachel Wise, *USI*
Lizzie Wright, *IU*

100 Women Who Care Clay County Steering Committee

Kim Emmert-O'Dell
Susan French
Leesa Nesty
Pat Redenbarger
Cara Ross
Renee Stewart
Cindy Watts
Roberta Weliever

100 Women Who Care Sullivan County Steering Committee

Camil Catlin
Kim Figg
Suzanne Gorgas
Jennifer Lincoln
Patti Mayfield
Ally Orwig
Jen Petty
Michele Smith
Jamie Woodruff

100+ Women Who Care Vigo County Steering Committee

P.J. Whitney Aubin
Julie Baesler
Shikha Bhattacharyya
Barbara Brugnau
Cindy Cox
Christina Crist
Martha Crossen
Tina Elliott
Brianna Gassert
Margot Gillespie
Linda Lutz
Jane Morse
Susan Powers
Eileen Prose
Laken Richardson
Sally Stewart

Guys Who Give Clay County Steering Committee

Brian Deakins
John Moore
Chris Rodgers

Guys Who Give Vigo County Steering Committee

Cary Albin
Kent Harris
William Hine
Randy Hutts
Dave Lotter
Keith Madley
Al Perone
B. Curtis Wilkinson



200 South 8th Street
Terre Haute, IN 47807
wvcf.org | 812.232.2234

This annual report covers the Wabash Valley Community Foundation's 2022 Fiscal Year.
October 1, 2021 – September 30, 2022.

If you have any questions or would like to discuss potential gift plans, please contact us
at 812.232.2234, toll free 877.232.2230, or via email at info@wvcf.org.

