

BIG OPPORTUNITIES. LOCAL DECISIONS.



CONTENTS

3	Who We Are	25	The Legacy Society
4	President's Letter	26	Supporting the Community Foundation
6	Bold Service	28	Supporters
8	Defining Strategic Roles	34	Memorials and Tributes
10	Responding to Need	35	Funds
12	Seeding Bold Innovation	40	Financials
20	Providing Bright Futures	42	Boards
23	Forward Thinkers	43	Committees



WHO WE ARE

MISSION

The mission of the Wabash Valley Community Foundation is to engage people, build resources and strengthen community in the Wabash Valley.

VISION

The Wabash Valley Community Foundation will be the primary steward of endowed funds and a leader that encourages broad-based charitable activity in the Wabash Valley.

WHY BOLD?

At the Wabash Valley Community Foundation, our bold service is a unique opportunity for people who love the Wabash Valley to use their philanthropy to build a brighter future. It is a chance to change things in a big, bold way and create a legacy of impact that will live on forever.

The generosity of local philanthropists has helped our communities become what they are today. The Wabash Valley we pass to the next generation will be defined by these permanent endowments and the long-term investments we make moving forward.

Now, more than ever, the Wabash Valley needs the support of forward-thinkers, visionaries and doers, such as yourself, who believe in creating brighter futures for the residents of Clay, Sullivan and Vigo counties. It is the only way to ensure our communities have the ability to address the issues that matter and how the Wabash Valley will have the available resources for generations to come.

**BIG
OPPORTUNITIES.
LOCAL
DECISIONS.**

A LETTER FROM OUR PRESIDENT

The title of this annual report is BOLD (Big Opportunities Local Decisions), an apt description of the exciting year of our Wabash Valley Community Foundation. As I reflected on 2019, I spent time reading about how bold service is impacting communities around the world and in the Wabash Valley. What I found is acts of bold service share some common tenets - regardless if they are happening in rural India, metropolitan Minneapolis or right here at home. The two tenets that are most striking to me are:

- ➔ **Bold service is community driven and community building.**
- ➔ **Bold service sparks innovation and change.**

Our community foundation exemplifies how our collective action drives change. In 2019, donors supported a multitude of endowment funds that will provide resources long into the future to fund innovative work in the fields for which they feel great passion. Many donors made unrestricted gifts, with the belief that future volunteers who serve the Community Foundation in the years to come will make impactful decisions about how resources are best deployed. Scholarship donors helped the next generation of community leaders achieve their dreams through education. Many donors also gave generously of their time as board members and volunteers who steward the wise use of our endowments to benefit the Wabash Valley.

One poignant example of bold, community-driven service from 2019 is the \$50,000 challenge grant to the Council on Domestic Abuse (CODA). When CODA faced the possibility of suspending residential services, unanimous support from our board, and widespread generosity from the community,

made it possible for families and children facing domestic violence to continue to receive life-saving support.

The support of the Community Foundation, and our sister foundations throughout Indiana, by Lilly Endowment Inc., is extraordinary. In 2019, the Wabash Valley, Clay County and Sullivan County Community Foundations were deeply engaged in the work of the Giving Indiana Funds for Tomorrow (GIFT) Phase VII initiative. Through GIFT VII, we are truly building community and sparking innovation and change. Giving in Fiscal Year 2019 increased from the previous year by 317%. Donations to unrestricted endowment funds grew by more than 1,000% as a result of the GIFT VII \$2-for-\$1 matching opportunity. A particularly exciting aspect of GIFT VII over the past year was the work of the Community Leadership Teams. A cross-section of community leaders in each of the three counties have worked with facilitators to identify the most pressing needs of the county and prioritize the ones that the Community Foundation is best positioned to address through an implementation grant from the Endowment. Much more to come about this important work in 2020.

At the start of the new decade, I feel confident the bold service of the Wabash Valley Community Foundation and the individual donors and volunteers that are the heart of the organization is creating a bright future for this good community of ours. Your generous support of the Wabash Valley, Clay County and Sullivan County Community Foundations is deeply appreciated. Thank you.



DR. NANCY BRATTAIN ROGERS
PRESIDENT

FROM DENT



BOLD SERVICE

Building Resources through Lilly Endowment Inc.'s GIFT Phase VII Initiative!

On October 12, 2018, Lilly Endowment Inc. announced the seventh phase of its Giving Indiana Funds for Tomorrow (GIFT) initiative. Much like its predecessor, GIFT VII focuses on unrestricted contributions that can benefit any purpose in the county and encourages residents to give generously to grow community foundation endowments.

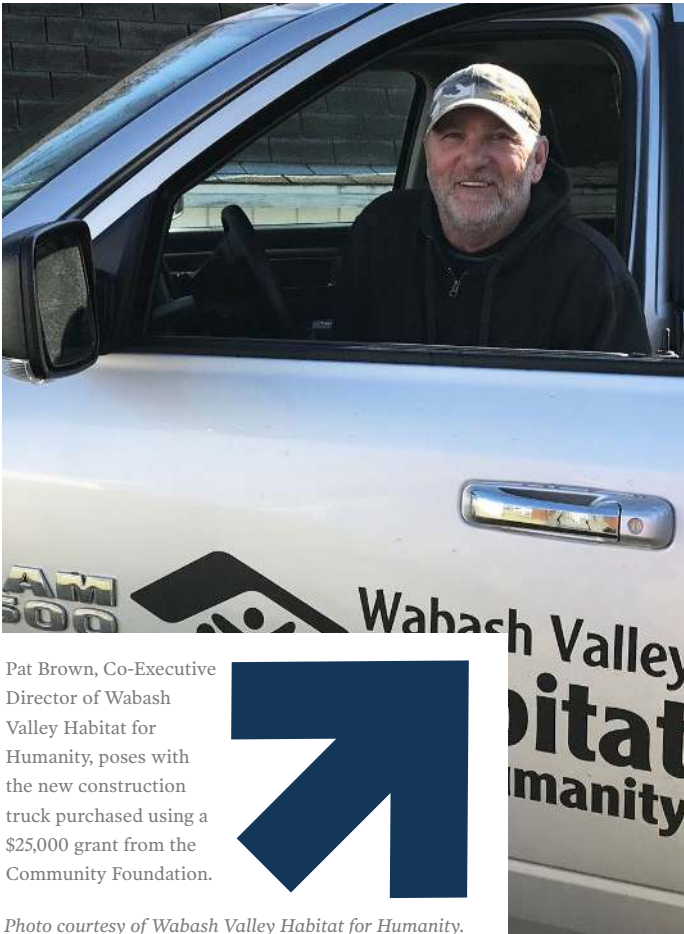
The Endowment's match varies depending on the population of the county. The Community Foundation is eligible to receive \$2,000,000 provided the match is met in all three counties by December 31, 2020. Once met, the challenge will yield matches of \$500,000 in Clay County, \$500,000 in Sullivan and \$1,000,000 in Vigo County.

As unrestricted endowment funds within the Community Foundation allowed us to award nearly \$503,000 in competitive grants to our communities in 2019 alone, every dollar we receive makes a difference. Unrestricted endowment funds allow the Community Foundation to use the funds for an emerging or existing charitable purpose, program or initiative, or where there is the greatest need. In turn, the earnings from these funds provide funding for the competitive grants that focus on the quality of life within the communities while ensuring the charitable wishes of our supporters are continued in perpetuity.

Each year, and twice per year in Vigo County, the Community Foundation receives proposals from dozens of nonprofit organizations seeking funding. The Distribution Committees in each county are tasked with narrowing down the proposals and allotting our available resources to a select number of these organizations. Though it seems like an easy task, there are several worthy projects and programs that do not receive funding from the Community Foundation because we simply do not have the available resources to fund every proposal. The success of GIFT VII will position us to create an even greater impact in the communities we serve in perpetuity.

Unrestricted endowment funds are vital in our efforts to strengthen Clay, Sullivan and Vigo counties. It is thanks to the generosity of those who create unrestricted endowment funds that allows the Community Foundation and its affiliates to award community grants through its competitive grants process. Now is an excellent opportunity to help build those resources and triple your impact with the \$2-for-\$1 match!

Details of the GIFT VII initiative vary by county and limited matching funds remain. If you are interested in taking advantage of the Lilly Endowment Inc. matching gift opportunity, please contact the Community Foundation at 812.232.2234.



Pat Brown, Co-Executive Director of Wabash Valley Habitat for Humanity, poses with the new construction truck purchased using a \$25,000 grant from the Community Foundation.



Photo courtesy of Wabash Valley Habitat for Humanity.



Sullivan residents gather during an event at the Sullivan Civic Center. The Sullivan County Community Foundation awarded a \$17,000 grant to upgrade the facility's AV System.



Clay City USA Volunteers prepare the land for the Dr. Forrest Buell Walking Trail thanks to a \$5,000 grant from the Clay County Community Foundation.

COMMUNITY FOUNDATION WORKS TOWARD DEFINING ITS STRATEGIC ROLES



Community leaders convened during a 24-hour Prosperity Institute training. *Photo courtesy of e2 Entrepreneurial Ecosystems.*

As a separate component of its GIFT VII initiative, Lilly Endowment awarded a \$175,000 Community Leadership Planning Grant to the Wabash Valley Community Foundation.

This funding allowed the Community Foundation to evaluate its local landscapes, identify and prioritize community needs and assets, develop a deeper understanding of what its role should be within the communities, and prioritize and develop strategies to address high-priority challenges and opportunities. The Community Foundation also used this opportunity to determine how it should address the economic challenges within the Wabash Valley community. With the planning grant, the Community Foundation retained e2 Entrepreneurial Ecosystems (e2) to share its Community Prosperity Framework via analytics, in-person institute and community engagement design and mentorship.

With its extensive experience spanning decades, e2 helps communities increase prosperity through entrepreneur-focused economic development and ecosystem building through mentoring, analytics support and fostering of the entrepreneurial movement. In providing its eCommunities framework and resources, e2 focuses on assisting communities and regions of all sizes design and implement a road map for entrepreneur-focused development that produces results. This allows communities and regions to grow funding for their strategies and ensure sustainability of efforts which enhance outcome realization.

In mid-July, community leaders from Clay, Sullivan and Vigo counties convened during an intensive 24-hour Prosperity Institute training hosted by the Community Foundation and led by e2. The team at e2 provided continuous data for community leaders to understand the regional context, as well as population, employment and income trends within each county. The community leaders then determined the primary drivers for each county's success. This determination provided a starting point for these leaders to focus on their community's genuine development opportunities.

The Prosperity Institute training allowed the Community Foundation to begin the process of identifying its strategic role in supporting its communities, as well as begin the application for the second component of Lilly Endowment Inc.'s community leadership funding.

The Community Foundation has since compiled all of the research, data and analysis produced from our Prosperity Institute training and is in the process of working with local leaders to identify high priority challenges and opportunities for our implementation proposal. The Community Foundation is eligible to receive up to \$350,000 for the implementation phase.

Each county is working independently. In Vigo, the Vigo County Leadership Team reviewed data, including data produced as part of the recent Terre Haute Chamber of Commerce's, "See you in Terre Haute: 2025 Community Plan" and narrowed the recommended areas for Community Foundation involvement. Leadership teams in Clay and Sullivan counties scheduled Community Conversations throughout September, October and November to identify the challenges and opportunities of their respective citizens. All three counties are currently in the process of drafting implementation proposals to submit to the Endowment.

To learn more about the Community Leadership Planning Grant, receive updates about implementation status or review the compiled information, please visit the Community Foundation's Virtual Library at wvcf.org/communitydata. Community leaders are welcome and encouraged to contact the Community Foundation at 812.232.2234 to submit organizational or community data to be shared on the Virtual Library.

UNRESTRICTED FUNDS ALLOW COMMUNITY FOUNDATION TO QUICKLY RESPOND TO COMMUNITY NEEDS

Council on Domestic Abuse

On August 19, 2019, Sarah Campbell, Executive Director of Council on Domestic Abuse (CODA), announced the agency would temporarily suspend its residential services for victims of domestic violence unless the agency could raise \$150,000 by September 14. Campbell explained the decision came after extensive delays in contract reimbursements from state-awarded grants, as well as increasing operating costs unable to be covered by grants.

One week later, on August 26, the Community Foundation announced a challenge grant – the third in the Community Foundation’s 27-year history – pledging to match every \$2 raised by CODA with \$1, up to a total of \$50,000.

“The Community Foundation works every day to help create a community where every person can thrive,” said Nancy Brattain Rogers, Wabash Valley Community Foundation Board President. “Adults and children who face domestic violence cannot thrive. The work CODA does saves the lives of our neighbors and helps families in this community find a path to financial, physical and emotional well-being. Supporting CODA is wholly consistent with our mission, and we were pleased to be able to offer this challenge to the community.”

A mere nine days after the Community Foundation issued the challenge grant, CODA announced it had met its initial fundraising goal of \$150,000, thereby assuring the continuation of its full residential services. Thanks to the \$50,000 challenge grant, various fundraisers and donations by businesses and individuals, the community helped raise \$232,000 – securing the future of the agency’s full residential services as well as providing funding for future delays in reimbursements.

It is thanks to the foresight of community-minded individuals who created permanent unrestricted endowment funds, as well as the generosity of the Terre Haute community, that the Community Foundation was able to provide the funding to keep CODA’s residential services available.

This challenge grant reinforced the importance of building unrestricted endowment funds, sometimes known as discretionary funds, for our communities and residents. Due to unrestricted endowment funds, the Community Foundation was able to act quickly and issue the challenge to assist CODA in reaching its \$150,000 goal. Unrestricted endowment funds typically provide funding for competitive grants, but also allow the Community Foundation to respond quickly to significant community issues such as the potential closure of the only residential service for victims of domestic violence in West Central Indiana.



Wabash Valley Community Foundation Board President, Dr. Nancy Brattain Rogers, announces the CODA challenge grant on August 26, 2019.

Hamilton Center

Hamilton Center, Inc. (HCI) is a regional behavioral health system serving central and west central Indiana by providing a broad array of behavioral health services for adults, children, adolescents and families. Offering individualized services, HCI works with consumers to assess needs and tailors treatment plans to meet those needs.

Last year, HCI submitted a grant request for funding to provide suicide prevention, education and awareness training to a minimum of 150 community members in Sullivan County. As an important component to HCI's overall commitment to community safety and access to mental health services, QPR (Question Persuade Refer) Suicide Awareness Training places more community stakeholders on the front lines of suicide prevention. Upon successful completion of the training, community stakeholders have the knowledge of how to interview potentially suicidal persons, determine immediate risks of suicide and help reduce the risk of a suicide attempt or completion through a safety planning and referral process.

To assist HCI in its commitment to community safety and access to mental health, the Sullivan County Community Foundation awarded a \$4,000 grant from the Joe and Betty Dukes Family Endowment Fund, Sullivan County Community Grant Fund, Sullivan County Community Foundation Board Endowment Fund and Jordan and Ally Orwig Endowment Fund. With this funding, HCI's QPR trainers were able to complete a total of eight trainings in Sullivan County with 167 participants. These trainings increased the number of persons in Sullivan County who are able to identify, understand and respond to signs of suicidality, as well as reduce suicidal behaviors and save lives.

Clay County Perry Township Volunteer Fire Department

Since its formation in 1970, the Clay County Perry Township Volunteer Fire Department has been an asset to the Cory community. In the early stages, Department members were only called upon to extinguish fires using their improvised farm trucks as fire trucks. As time passed, the Department began to purchase equipment and expanded their services to include emergency medical services, rescues and hazardous material spills.



Clay County Perry Township Volunteer Fire Department has a roster of 20 active volunteer members.

To effectively provide the assistance needed in the community, volunteers must be equipped with the proper gear to ensure they remain safe. Unfortunately, protective gear is quite expensive and, with a roster of 20 active volunteer members and a limited budget, nearly impossible to purchase. As a result, the Department was issuing 25-year-old gear originally used by the Indianapolis Fire Department prior to being passed on to local volunteer departments. This meant sizes and quality were often ignored in order to outfit a volunteer member. The National Fire Protection Agency (NFPA) states the useful life of firefighter clothing is only 10 years, which meant potential compromises to the safety of these community volunteers.

With support from the Clay County Community Foundation, the Department was able to purchase updated protective gear as well as train its members on the care and maintenance of each item. The \$12,000 grant came from the Dr. Hal and Muriel Glidden Family Fund, Guy & Anne Tribble Family Fund, Gilbert and Wilmadean Schepper Family Fund, Wabash Valley Pharmaceutical Society Fund – Clay County, Traci K. Miller Memorial Fund, Miller & Stewart, L.L.C., CPA's Clay County Community Fund, Richard and Sue Lightfoot Endowment Fund and Larry & Martha Tempel Family Community Fund. The effect of this grant will not only be felt within the Department, but will be dispersed throughout the community with each call answered by the Clay County Perry Township Volunteer Fire Department.

SEEDING BOLD INNOVATION

\$1,187,958.65



Arts & Culture

\$145,063.20

ANSHUTZ-SMITH MEMORIAL PLAZA

Bill Wolfe Sculpture

\$8,318.00

Bruce Anshutz - Chad Smith Memorial Plaza Fund

Project Support

\$4,000.00

Bruce Anshutz - Chad Smith Memorial Plaza Fund

ART SPACES, INC.

General support

\$500.00

Jim and Beverly Cristee Fund

General support

\$345.00

Art Spaces Endowment Fund

CLAY COUNTY GENEALOGICAL SOCIETY

Purchase of new computers

\$2,400.00

Guys Who Give Clay County Endowment Fund; H. Michael Lawson Community Fund; Richard and Sue Lightfoot Endowment Fund; Fred Nevils Family Fund; Wabash Valley Pharmaceutical Society Fund - Clay County; Riddell National Bank - John H. Riddell Memorial Fund

CLAY COUNTY HISTORICAL SOCIETY

Replace museum boiler

\$1,000.00

Eva's Generation Fund

COMMUNITY THEATRE OF TERRE HAUTE

General support

\$386.00

Community Theatre of Terre Haute Endowment Fund

General support

\$198.00

Robert S. Ratcliffe Memorial Fund

Purchase of stage safety ladder

\$2,700.00

David and Joan Zaun Endowment Fund

NORTH CLAY MIDDLE SCHOOL

Program support

\$224.00

North Clay Student Art Collection Endowment Fund

SULLIVAN COUNTY HISTORICAL SOCIETY

General support

\$208.00

Rev. Willis and Virginia Ross Fund for the Sullivan County Historical Society

TERRE HAUTE COMMUNITY BAND

General support

\$50.00

Newman Family Endowment Fund

Purchase of chairs, stands and storage racks

\$2,326.00

Andres Family Endowment Fund; Thomas and Susan Dinkel Family Fund; David and Becky Doti Family Fund; Robert R. and Dorothy W. Drummond Community Fund; Steve Harris Memorial Endowment Fund; Gershon H. & Janice K. Loeser Endowment Fund; Richard C. Vining Community Fund

TERRE HAUTE SYMPHONY ASSOCIATION

General support

\$535.00

David and Jerry Penman Mitchell Concertmaster Chair Fund

General support

\$141.00

Richard and JoAnne Rowe Educational Fund for Musical Arts

General support

\$5,978.00

Terre Haute Symphony Association Fund

General support

\$3,734.00

Terre Haute Symphony Association - Walter and Margaret Reed Fund

Support for annual Children's Concert

\$13,500.00

Joseph E. and Martha Jean Claretto Endowment Fund; Susan Decker and Vicki Kosowsky Community Fund; Jerry and Jo Einsteadig Community Fund; Vigo County Community Grant Fund; Gibson Family Endowment Fund; Andy and Libby Hendricks Endowment Fund

THE SHELDON SWOPE ART MUSEUM, INC.

Window and door replacement

\$25,000.00

Walter and Katherine Bledsoe Family Endowment Fund; Brighton Family Fund; Victor and Marian L. Danek Endowment Fund; Thomas L. and Connie L. Francis Charitable Endowment Fund; Lilly Endowment Fund; Meis Family Endowment Fund

General support

\$309.00

Mary Ann Carroll Fund for the Sheldon Swope Art Museum

Preservation and restoration of artwork

\$2,522.00

John Rogers Cox Preservation Fund

General support

\$512.37

Edmund J. and Mary R. Dede Fund

General support

\$307.00

Susie Dewey Fund for the Sheldon Swope Art Museum

General support

\$350.00

Norma Lemmon Evans Fund for the Sheldon Swope Art Museum

General support

\$1,831.00

Thomas L. and Connie L. Francis Endowment Fund for The Sheldon Swope Art Museum

General support

\$315.00

Harriet McNeal Fund for the Sheldon Swope Art Museum

General support

\$555.00

Miriam Fund for the Sheldon Swope Art Museum

General support

\$1,869.00

Marilyn Wheeler Pendergast Foundation Fund for the Sheldon Swope Art Museum

General support

\$137.83

Ronald G. Reeves Endowment Fund

General support

\$317.00

Robert and Carolyn Steinbaugh Fund for the Sheldon Swope Art Museum

General support

\$28,218.00

Sheldon Swope Art Museum Endowment Fund

General support

\$2,332.00

Hermine M. Haslem Endowment Fund for the Sheldon Swope Art Museum

General support

\$13,421.00

Eileen Stith Jensen Endowment Fund for the Sheldon Swope Art Museum

Purchase and care of artwork

\$12,557.00

Guido and Barbara Miescher Endowment Fund

General support

\$241.00

Shagley Family Fund for the Sheldon Swope Art Museum

General support

\$241.00

Barbara A. Vogel Fund for the Sheldon Swope Art Museum

VIGO COUNTY HISTORICAL SOCIETY

General support

\$7,385.00

Vigo County Historical Society Endowment Fund

WABASH VALLEY COMMUNITY FOUNDATION, INC.

Support of THS Fund for the Future in honor of Lu & Laney Meis and Jack Ragle

\$100.00

Ralph and Helen Tevlin Endowment Fund



Community Development

\$248,601.32

ANSHUTZ-SMITH MEMORIAL PLAZA

Labor fees

\$1,000.00

Bruce Anshutz - Chad Smith Memorial Plaza Fund

Name plates for Anshutz-Smith Memorial Plaza

\$64.20

Bruce Anshutz - Chad Smith Memorial Plaza Fund

Purchase of slab and footers for Plaza

\$2,000.00

Bruce Anshutz - Chad Smith Memorial Plaza Fund

Support of Anshutz-Smith Memorial Plaza

\$300.00

Bruce Anshutz - Chad Smith Memorial Plaza Fund

ART SPACES, INC.

Turn to the River
\$22,500.00

Salo and Mary Levite Endowment Fund; Bentrup Family Endowment Fund; Gene and Wilma J. Eckerty Memorial Fund; Wernsing Fund

BRAZIL FIRST UNITED METHODIST CHURCH

Purchase of outdoor lighting
\$1,600.00

Jeffrey A. and J. Shan Bell Memorial Fund; Steve and Michelle Bell Fund; Brazil Rotary Community Fund; Clyde and Kathryn Bullerdick Memorial Fund; Melvin E., Rosemary and Eugene Nolte Family Memorial Fund

CARLISLE TOWN BOARD

Carlisle Town Park improvement and beautification
\$2,216.00

Jesse R. Sherwood Fund

CITY OF BRAZIL

Community Support
\$10,873.63

City of Brazil Downtown Facades Improvement Philanthropic Project Fund

Brazil City Municipal Golf Course beautification
\$207.00

Roy E. Brown Memorial Fund

CITY OF CLINTON

Purchase of tables and men's restroom installation
\$4,700.00

Herman and Coriene White Charitable Fund

CITY OF SULLIVAN

Purchase of downtown banners
\$4,350.00

Lorene B. and Malcolm Pigg Beautification Fund

Center Ridge Cemetery road repairs

\$10,000.00

Lilly Endowment Board Designated Fund for Sullivan County; Sullivan County Community Grant Fund

Central Plaza splash pad installation

\$4,684.00

100 Women Who Care Sullivan County Fund; Lois A. Andrews Foundation Fund for Sullivan County

Central Plaza splash pad installation

\$10,581.00

Lilly Endowment Fund for Sullivan County; Harold and Malinda Medsker Endowment Fund; Lorene B. and Malcolm Pigg Endowment Fund; Sullivan County Community Grant Fund

Central Plaza splash pad installation

\$4,735.00

Sullivan Rotary Club Endowment Fund; Templeton Coal Company, Inc. Fund for Sullivan County

CLAY YOUTH BASEBALL LEAGUE

General support
\$318.00

Clay Youth Baseball League Fund

DOWNTOWN TERRE HAUTE, INC.

Purchase of downtown Terre Haute Christmas décor

\$1,300.00

Terre Haute Cityscape Fund

HULL CEMETERY ASSOCIATION, INC

Maintenance support
\$9,286.00

Charles Harlan Fund for the Hull Cemetery

INDIANA SOCCER ASSOCIATION, INC.

Soccer field expansion and upgrades
\$20,000.00

Clay Civic Memorial Foundation Community Fund; Eva's Generation Fund; Anna Ferrell Endowment Fund; Dr. Hal and Muriel Glidden Family Fund; Miller & Stewart, L.L.C., CPA's Clay County Community Fund; Traci K. Miller Memorial Fund; Herschel and Josephine Morge Endowment Fund; Guy & Anne Tribble Family Fund

MEROM CAMP & RETREAT CENTER INC.

General support

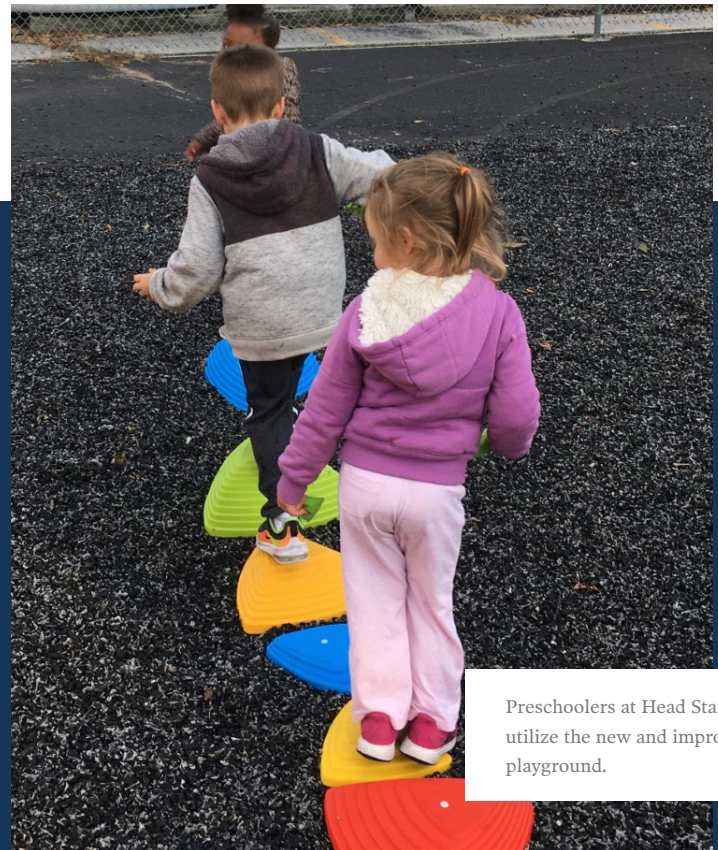
\$2,623.00

Merom Conference Center Endowment Fund

Steeple and cupola roof work

\$10,000.00

John and Yvonne Longfield Endowment Fund; Dr. Allen and Shirley Lueking Family Fund; Lana Martindale Memorial Fund; Larry and Patti Mayfield Family Endowment Fund; Sullivan County Community Grant Fund



Preschoolers at Head Start utilize the new and improved playground.

Western Indiana Community Action Agency

As a comprehensive preschool program, Western Indiana Community Action Agency, Inc's Head Start Program provides school readiness, education, health, nutrition and parent-involvement services to low-income children ages three to five who live in Vigo County. With current enrollment at full capacity with 150 children, the Head Start Program typically serves over 300 children each year.

The Program focuses on cognitive, social and emotional development activities to prepare students for success in school; however, the old playground structure at Head Start did not support that focus. Head Start's playground equipment, intended for an older age range of children, was over two decades old and had undergone multiple modifications over the years to meet childcare licensing regulations. Due to the modifications, large portions of the play structure were disassembled, leaving sections of unusable playground space. These modifications barely met applicable playground safety standards, and forthcoming modifications would potentially result in health and safety risks to the children.

To assist with a much-needed playground renovation, the Community Foundation awarded a grant in the amount of \$7,500 to the Head Start Program to create learning centers on the playground – thereby

creating an extension of the classrooms. The renovation, completed during summer 2019, has provided children with an obstacle course, balancing activities, hands-on science activities, musical and art activities to complement the previously installed swings and tricycle track. This new playground uses a variety of learning styles and allows for exploration and discovery to encourage development in motor and social skills. Thanks to the funding from the Hulman George Family Endowment Fund and Delmar L. and Betty L. Jones Family Fund, this grant will allow children to reach their fullest potential through the multi-educational, comprehensive and safe outdoor learning environment.

Innovate Sullivan

Innovate Sullivan, an outreach of Launch Terre Haute, is committed to forging new paths by engaging middle and high school students in Sullivan County with 21st century coding courses and meetups. As software drives this modern-data economy, Innovate Sullivan serves students by propelling them on their paths to future success as valuable employees and entrepreneurs. Developing talent and skills within area youth is key to creating a transformational, entrepreneurial culture that inspires creative business startups and innovation in existing businesses. As a result, residents experience a better quality of place in the Sullivan community.

As local leaders have struggled with the loss of local talent in the community, the Sullivan County Community Foundation awarded a \$20,000 grant in support of the Innovate Sullivan - 21st Century Workforce Programming. This grant, which came from the Harold and Malinda Medsker Endowment Fund, Lois A. Andrews Foundation Fund for Sullivan County, Lilly Endowment Board Designated Fund for Sullivan County and Allomatic Products Community Enrichment Fund, will help create opportunities to solve the problem of attracting and retaining talent in Sullivan County, which will ultimately lead to community transformation.



Students attend a coding course offered by Innovate Sullivan.

MEROM IMPROVEMENT ASSOCIATION, INC.

General support
\$2,487.00
 Merom Improvement Association Agency Fund

MIRACLE ON 7TH STREET

General support
\$6,000.00
 Helping Hand Endowment Fund; Thelma Maxine Dever Memorial Fund; Vigo County Community Grant Fund; Templeton Coal Company, Inc. Fund for Vigo County; Chris and Melinda Wall Community Fund

NETWORK FOR GOOD

2019 Capacity Building
\$62,000.00
 Delmar L. and Betty L. Jones Family Fund; Lilly Endowment Fund

POLAND CHAPEL HISTORICAL SOCIETY

Poland Historical Chapel maintenance, preservation and upkeep
\$2,041.00
 Marion and Marie Kattman Sendmeyer Endowment Fund for Poland Historical Chapel

Heating and cooling replacement
\$5,000.00
 Lewis & Eva Berry Endowment Fund; Beulah Ahlemeyer Memorial Fund; Bill and Edna Ahlemeyer Endowment Fund; Kenneth and Eleanor Hauser Endowment Fund; Gilbert and Wilmadean Schepper Family Fund; Norman and Carolyn Keiser Endowment Fund

RETHINK, INC.

Ryves neighborhood kitchen and storefront
\$20,000.00
 PMC Fund; Wernsing Fund; Wabash Valley Asphalt Endowment Fund; David and Joan Zaun Endowment Fund; Hulman George Family Endowment Fund

SULLIVAN COUNTY PUBLIC LIBRARY

General support
\$420.00
 Sullivan County Public Library Endowment Fund

HISTORICAL MATERIALS PRESERVATION ASSESSMENT

\$6,000.00
 Allomatic Products Community Enrichment Fund; Kenneth and Mary Conner Endowment Fund; James and Mary Halberstadt Endowment Fund; Bill and Lorene Hankins Endowment Fund; Harold and Malinda Medsker Endowment Fund

SYCAMORE TRAILS RC&D COUNCIL, INC.

General support
\$2,613.00
 Sycamore Trails RC&D Endowment Fund

TERRE HAUTE PARKS AND RECREATION DEPARTMENT

General support
\$779.00
 Terre Haute Parks Department Endowment Fund

TERRE HAUTE ROTARY FOUNDATION INC.

General support
\$1,727.00
 Terre Haute Rotary Club Endowment Fund

TREES INC.

General support
\$137.83
 Ronald G. Reeves Endowment Fund

General support

\$1,210.00
 TREES Inc. Endowment Fund

VIGO COUNTY PARKS AND RECREATION DEPARTMENT

Griffin Bike Park all-terrain wheelchair
\$3,807.00
 Jackie's Garden Fund

WABASH VALLEY COMMUNITY FOUNDATION, INC.

General support
\$275.66
 Ronald G. Reeves Endowment Fund

WREATH, INC. / THE ROCK

Playground expansion
\$10,766.00
 Clay City Community Recreation Fund; Clay City Lions Community Fund; Clay Civic Memorial Foundation Community Fund; Randy and Cathy Collins Endowment Fund; John E. and Karen E. Mercer Family Endowment Fund; Jim and Alice Romas Endowment Fund



Education
\$203,275.36

BOY SCOUTS OF AMERICA, CROSSROADS OF AMERICA COUNCIL

General support
\$275.66
 Ronald G. Reeves Endowment Fund

CAMP NAVIGATE

General support
\$3,000.00
 Earl and Tina Elliott Advised Fund

CHANCES AND SERVICES FOR YOUTH

Big Brother/Big Sister mentoring program for Sullivan County
\$657.00
 Stair Steps to Success Endowment Fund

CLAY COMMUNITY SCHOOLS

Support for children in need at Eastside Elementary School
\$376.00
 Angels for Eastside Fund

Adult Education Coordinator

\$37,394.88
 Clay Community Schools CAPE Fund

CLAY COUNTY GENEALOGICAL SOCIETY

General support
\$312.00
 Clay County Genealogical Society Fund

CRADLES OF CLAY COUNTY

Tuition assistance
\$7,000.00
 James R. Piker, Ada A. Piker and Virginia M. Ginter Memorial Fund; Terre Haute Day Nursery Association Endowment Fund

Tuition assistance

\$10,000.00
 Connley-Hall-Rentschler Fund

DICTIONARY PROJECT

General support
\$4,968.00
 Wabash Valley Dictionary Project Endowment Fund; Fayette Elementary School Dictionary Project Fund; Fuqua Dictionary Project Fund; Goodwill Industries Tennis Family Dictionary Fund; Joink Dictionary Fund for Lost Creek Elementary School; John and Karen Lukens Dictionaries for Davis Park Elementary School Fund; Mauri and Janice Modesitt Dictionary Fund; James R. Piker, Ada A. Piker and Virginia M. Ginter Memorial Fund; Susan Templeton Scott Dictionary Project; Karen J. Wright Memorial Fund - Dictionary

DUGGER UNION COMMUNITY SCHOOL

Media Center
\$2,500.00
Joe and Betty Dukes Family Endowment Fund

GIRL SCOUTS OF CENTRAL INDIANA

General support
\$723.00
Girl Scouts of Central Indiana Fund

HAMILTON CENTER, INC.

Military Veterans Program Coordinator
\$225.00
Don and Mary Goltry Scholarship Fund

INDIANA GOLF FOUNDATION INC

General support
\$3,250.00
Earl and Tina Elliott Advised Fund

INDIANA STATE UNIVERSITY FOUNDATION

Scott College of Business Dean's Discretionary Fund
\$2,000.00
Earl and Tina Elliott Advised Fund

INDIANA UNIVERSITY – BLOOMINGTON

Osteoporosis Prevention and Treatment at Mollie Wheat Clinic
\$9,000.00
James R. Piker, Ada A. Piker and Virginia M. Ginter Memorial Fund

ISU EARLY CHILDHOOD EDUCATION CENTER

Purchase of print and audio books
\$1,200.00
Terre Haute Day Nursery Association Endowment Fund

IVY TECH COMMUNITY COLLEGE

Upgrades/Enhancements at the Terre Haute Facility
\$1,374.00
Ivy Tech Technology Endowment Fund

NORTHEAST SCHOOL CORPORATION

North Central High School athletic programs
\$240.00
Fund to Honor Coach Paul E. Weekley

PURDUE EXTENSION, VIGO COUNTY OFFICE

Support program scholarships
\$1,158.00
Purdue Extension Vigo County Endowment Fund

ROSE-HULMAN INSTITUTE OF TECHNOLOGY

Contribution to Edmund J. Dede Scholarship for Mechanical Engineers
\$512.37
Edmund J. and Mary R. Dede Fund

Contribution to Hillman Jewelers - George I. Felstein Scholarship Fund
\$961.90
George I. and Rose E. Felstein Fund

General support

\$3,156.20
Jessie E. Hickman Fund

General support

\$10,463.20
Mary Kindrick Memorial Fund

SAINT MARY-OF-THE-WOODS COLLEGE

General support
\$3,156.20
Jessie E. Hickman Fund

SAINT MEINRAD SCHOOL OF THEOLOGY

General support
\$10,463.20
Mary Kindrick Memorial Fund

SEFI / SCIENCE EDUCATION FOUNDATION OF INDIANA

Prize funding for student winners in the categories of medicine and science
\$961.00
Terre Haute Academy of Medicine Fund

SOUTHWEST HIGH SCHOOLS ALUMNI ASSOCIATION INC.

General support
\$4,726.00
Southwest High Schools Alumni Association - Cooper Endowment Fund

SOUTHWEST SCHOOL CORPORATION OF SULLIVAN COUNTY

Support for students in need
\$423.00
Angels for Sullivan Junior High School Fund

SULLIVAN CEO PROGRAM

\$14,000.00
Rusty and Margie Hays Endowment Fund; Don and Nancy Hunt Community Fund; JJJ & K Endowment Fund; Lilly Endowment Board Designated Fund for Sullivan County; Sullivan Business and Professional Women's Club Endowment Fund

ST. PATRICK SCHOOL

STEM program additions
\$7,346.00
Haley Kathryn Smith Memorial Fund

SULLIVAN COUNTY 4-H

General support
\$602.00
Sullivan County 4-H Endowment Fund

SULLIVAN COUNTY PUBLIC LIBRARY

Genealogy Department
\$1,712.00
Sullivan County Public Library Genealogy, Family & County History Endowment Fund

SULLIVAN COUNTY SOIL & WATER CONSERVATION DISTRICT

8th Grade River Expedition
\$4,000.00
Sullivan County Soil and Water Conservation Fund

SULLIVAN ELEMENTARY SCHOOL

Support for children in need at Sullivan Elementary School
\$517.00
Angels for Sullivan Elementary School

SULLIVAN HIGH SCHOOL

Program support
\$522.00
Paul Edmiston Agriculture Education Fund

TERRE HAUTE BAR ASSOCIATION

Purchase of student handbooks for Mock Trial
\$1,082.67
Terre Haute Bar Association Endowment Fund

Mock Trial expenses

\$154.08
Terre Haute Bar Association Endowment Fund

TERRE HAUTE CHILDREN'S MUSEUM

Program support
\$702.00
"Blessed for Another Day" - Matt Luecking Memorial Endowment Fund

Operational support

\$17,589.00
Terre Haute Children's Science and Technology Museum Endowment Fund

VALLEY CHILD DEVELOPMENT CENTER

Construction of playground pergola and sandbox
\$8,300.00
Terre Haute Day Nursery Association Endowment Fund

VIGO COUNTY EDUCATION FOUNDATION

Support for children at Fayette Elementary School
\$273.00
Nancy Hellmann Educational Fund

General support

\$2,586.00
Vigo County Education Foundation Endowment Fund

Give-a-Book Program

\$7,500.00
100 Women Who Care Endowment Fund; Altrusa Foundation Fund; Erna L. Cox Educational Fund; Baldwin E. Kloer Memorial Fund

VIGO COUNTY PUBLIC LIBRARY

General support
\$492.00
Vigo County Public Library Endowment Fund

FRIENDS OF THE VIGO COUNTY PUBLIC LIBRARY

Support for children's literature
\$618.00
Esther MacBain Meeks Memorial Fund for Children's Literature

VIGO COUNTY SCHOOL CORPORATION

Support of parenting students, the care of their pre-school age children and the fees involved with enrolling in post-secondary college, vocational education or certificate programs
\$533.00
A.L.L. - Washington High School Nursery Endowment Fund

VIGO COUNTY HISTORICAL SOCIETY

Auditorium Technology and Media Systems
\$10,000.00
PMC Fund; Leon & Roberta Sackrider Endowment Fund; Templeton Coal Company, Inc. Fund for Vigo County; Terry and Beth Tevlin Community Fund; Myrl and Marie Wilkinson Community Endowment Fund

VIGO COUNTY 4-H

Support of day camp
\$270.00
Youth Grant Committee Endowment Fund

WESTERN INDIANA COMMUNITY FOUNDATION

Contribution to Vermillion County Community Foundation - Herman and Coriene White Family Technology Scholarship; Herman and Coriene White Family Business Scholarship
\$4,000.00
Herman and Coriene White Charitable Fund



Health & Human Services

\$511,777.70

14TH & CHESTNUT COMMUNITY CENTER

Purchase playground mulch
\$5,250.00
Terre Haute Day Nursery Association Endowment Fund

General support

\$1,721.00
14th & Chestnut Community Center Endowment Fund

General support

\$284.00
Col. Peter Baer Memorial Fund

Replace food pantry ramp

\$24,739.00
Community Chest of Terre Haute Fund; Helping Hand Endowment Fund

General support

\$50.00
Newman Family Endowment Fund

General support

\$800.00
Bruce and Nancy Brentlinger Family Fund

AMERICAN CANCER SOCIETY, VIGO COUNTY UNIT

General support
\$5,060.00
Earl and Hazel Travioli Charitable Endowment Fund

AMERICAN HEART ASSOCIATION

General support
\$5,060.00
Earl and Hazel Travioli Charitable Endowment Fund

AMERICAN NATIONAL RED CROSS, WEST CENTRAL INDIANA

General support
\$394.36
Leo & Virginia Pellum Endowment Fund

ARC OF VIGO COUNTY

General support
\$231.00
ARC of Vigo County Endowment Fund

AREA 7 AGENCY ON AGING AND DISABLED

General support
\$950.00
Area 7 Agency on Aging and Disabled Endowment Fund

BOY SCOUTS OF AMERICA, CROSSROADS OF AMERICA COUNCIL

General support
\$1,289.00
Boy Scouts of America, Crossroads of America Council Endowment Fund

General support
\$198.00
Robert S. Ratcliffe Memorial Fund

BROWN BAGGERS SCHOOL FOOD PROGRAM
General support
\$2,124.00
Brown Baggers School Food Program Endowment Fund

General support
\$5,000.00
Black Beauty Sullivan County Community Fund; Guy and Wilma Edds Charitable Endowment Fund-Gammie's Closet; Garrett Family Fund; Lilly Endowment Board Designated Fund for Sullivan County; William Snyder Endowment Fund

CAMP NAVIGATE
General support
\$5,000.00
Earl and Tina Elliott Advised Fund

Coffee shop start-up expenses
\$385.00
Youth Grant Committee Endowment Fund

CATHOLIC CHARITIES TERRE HAUTE
Operational support
\$1,000.00
Earl and Tina Elliott Advised Fund

General support
\$577.00
Catholic Charities Endowment Fund

General support
\$512.35
Edmund J. and Mary R. Dede Fund

General support
\$1,937.40
Pfister Fund

General support
\$9,097.00
Terre Haute Catholic Charities Foodbank Endowment Fund

General support
\$500.00
Bruce and Nancy Brentlinger Family Fund

CHANCES AND SERVICES FOR YOUTH
General support
\$2,479.00
C.H.A.N.C.E.S. and Services for Youth Endowment Fund

CLAY CO. INDIANA COUNCIL ON AGED & AGING
Kitchen update
\$2,000.00
Clay County Farm Bureau Endowment Fund; Coughanowr Insurance Inc. Endowment Fund; Merle and Louise Crafton Family Endowment Fund; Jeffrey Etling and Dr. Miranda Goodale Endowment Fund; Paul and Rita Harden Family Fund; Don and Marian Harrison Endowment Fund; Tom and Lynne Reberger Endowment Fund

CLAY COUNTY HUMANE SHELTER
Adoption and Rescue Center
\$504.00
Kelly Fuqua Memorial Fund

Shelter flooring restoration
\$10,000.00
100 Women Who Care Clay County Fund; L.T. and Janice K. Clark Family Endowment Fund; Clay Civic Memorial Foundation Community Fund; Albert and Freda Eder DeCoursey Community Fund; Popcorn Festival Committee Fund

COUNCIL ON DOMESTIC ABUSE, INC.
Daycare tuition assistance for shelter residents
\$7,000.00
James R. Piker, Ada A. Piker and Virginia M. Ginter Memorial Fund

Shelter recreation area updates
\$10,975.00
100+ Women Who Care Community Fund; Erna L. Cox Community Fund; Vigo County Community Grant Fund; Guys Who Give Community Fund

General support
\$200.00
Ralph and Helen Tevlin Endowment Fund

General support
\$3,000.00
Voltmer Family Endowment Fund

CRISIS PREGNANCY CENTER OF THE WABASH VALLEY
Printed materials for 'Creating Positive Relationships'
\$2,600.00
Lilly Endowment Fund; Terre Haute Academy of Medicine Endowment Fund; White Family Endowment Fund

FIRST PRESBYTERIAN CHURCH OF SULLIVAN
General support
\$1,646.00
Community Kitchen Endowment Fund

FOUR RIVERS RESOURCE SERVICES
Community volunteer program
\$5,647.00
Hartman Brown Fund; Lavelda M. Goble Endowment Fund; Landsbaum Endowment Fund; Mae C. and Jack H. Page Endowment Fund; Alpa Patel and Thomas Yeagley Community Fund; Garrett Pendergast and Stephanie Welsh Community Fund; Jeff and Jennifer Perry Fund; Wabash Valley Pharmaceutical Society Fund - Vigo County; John Tipton Memorial Fund

FSA OF THE WABASH VALLEY, INC.
General support
\$150.00
Richard C. Vining Endowment Fund

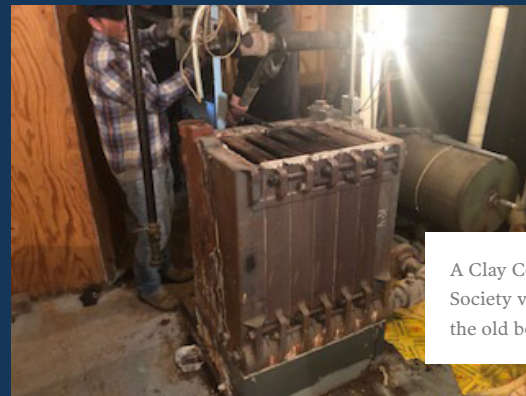
Support for students at Terre Haute North Vigo High School or young adults up to age 30
\$2,296.00
Jamie Jacobsen Memorial Endowment Fund

General support
\$22,500.00
Victor and Marian L. Danek Endowment Fund; O. Earl and Tina Elliott Family Endowment Fund; Gary and Nancy Faulkner Fund; Allen and Mildred D. Felstein Charitable Endowment Fund; First Financial Bank Community Endowment Fund; Lavelda M. Goble Endowment Fund; Herrington Family Endowment Fund

Clay County Historical Society

The Clay County Historical Society has spent the past several years working to build awareness in the Clay community by sponsoring new programs and helping to beautify downtown Brazil. These efforts have resulted in increased attendance to the museum with an estimate of over 3,500 individuals visiting on a yearly basis. The museum, which offers free admission Tuesday-Saturday, benefits all residents in Clay County and hosts school trips, tour groups and tourists traveling on scenic National Road.

In November 2019, when the heat was turned on for the winter season, museum officials at the Historical Society discovered a sizeable leak in the half-century-old boiler. After receiving an inspection, it was determined the heating system was not worth salvaging due to the age of the unit versus the cost of repairs. In addition, museum officials were advised not to increase the heat aside from warming the building to protect from freezing. In increasing the temperature, the pressure would cause a greater leak and could result in damages.



A Clay County Historical Society volunteer removes the old boiler.

With a \$13,000 grant from the Clay Civic Memorial Foundation Community Fund, Anna Ferrell Endowment Fund, Hostetler County Fund, Lilly Endowment Board Designated Fund for Clay County, Herschel and Josephine Morge Endowment Fund, Fred Nevils Family Fund and Bill and Edna Ahlemeyer Endowment Fund, as well as a \$1,000 Urgent Need Grant, the Clay County Community Foundation was able to provide funding to replace the boiler and make a significant impact toward preserving Clay County's history.

GIBAULT FOUNDATION, INC.
General support
\$512.37
Edmund J. and Mary R. Dede Fund

General support
\$4,981.00
Gibault Fund

GILL TOWNSHIP VOLUNTEER FIRE FIGHTERS INC.
Operational support
\$412.00
Gill Township Volunteer Fireman's Operational Fund

GIRL SCOUTS OF CENTRAL INDIANA
General support
\$198.00
Robert S. Ratcliffe Memorial Fund

GOLDEN RETRIEVER RESCUE & COMMUNITY EDUCATION
General support
\$50.00
Newman Family Endowment Fund

HAMILTON CENTER, INC.
Outdoor play area for infants
\$5,000.00
Terre Haute Day Nursery Association Endowment Fund

Treatment and care of behavioral health
\$714.00
Katherine Hamilton Endowment Fund for Hamilton Center Inc.

Clubhouse facility improvements
\$20,000.00
Lilly Endowment Board Designated Fund; Lukens Family Endowment Fund; Piker Family Fund; Donald O. Springman Endowment Fund; Paul M. Stanley Community Fund

HAPPINESS BAG, INC.
General support
\$290.00
Happiness Bag Endowment Fund

HENDRICKS CO. CHILD ADVOCACY CENTER
Capacity Building project
\$10,000.00
Lilly Endowment Board Designated Fund

Capacity Building project
\$5,000.00
Hostetler Family Fund; William and Mary Margaret Kocher Memorial Fund; McCullough Family Fund; Utilities District of Western Indiana REMC Community Fund; Mr. and Mrs. Fletcher D. Stitzle Endowment Fund; Larry & Martha Tempel Family Community Fund; Ernest and Mary Yelton Community Fund; Richard and Hila Zimmerman Endowment Fund

HUMANE SOCIETY OF SULLIVAN COUNTY
General support
\$1,782.00
Humane Society of Sullivan County Endowment Fund

INDIANA ELKS ASSOCIATION
Parade of Nickels
\$6,203.00
Robert P. White Elks Charitable Fund

LIFE IN FAIRBANKS TOWNSHIP, INC.
Attic insulation
\$5,000.00
William Ferd and Connie Pleasant Johnson Memorial Fund; Dick and Janice Knotts Fund; Milton L. and Ruth Pleasant Kult Fund; Leo & Virginia Pellum Endowment Fund; Sullivan County Community Grant Fund

LIGHT HOUSE MISSION, INC.
General support
\$512.37
Edmund J. and Mary R. Dede Fund

General support
\$4,447.00
Golish Family Memorial Fund for Light House Mission

General support
\$301.00
Light House Mission Endowment Fund

MANNA FROM SEVEN
General support
\$1,000.00
Earl and Tina Elliott Advised Fund

MAPLE CENTER, INC.
Integrative Health Recovery Services program
\$10,000.00
Delmar L. and Betty L. Jones Family Fund; Lilly Endowment Board Designated Fund; Diann and Craig McKee Community Fund; Medical Heritage Society Fund; The Nation Fund; Bill and Marci Gropp Tennis Fund

MEALS ON WHEELS, INC.
Kitchen upgrades
\$10,000.00
Vigo County Community Grant Fund; Ray G. Ingram Endowment Fund; Lilly Endowment Fund; Lilly Endowment Board Designated Fund; Carl W. ("Bang") and Josephine M. Price Memorial Fund

MENTAL HEALTH AMERICA
General support
\$332.00
Mental Health Association in Vigo County Endowment Fund

MID-LAND MEALS, INC.
Vigo County Wait-list reduction
\$9,500.00
Dr. Bruce Philip Anshutz Memorial Fund; Robert and Julie Baesler Community Fund; Bobby Lee Bennett & Shirley Rosalee Williams Dailey Bennett Fund; Joseph H. and Robin E. Chillington Endowment Fund; Vigo County Community Grant Fund

MOTHER THEODORE CORPORATION IV
General support
\$11,301.50
Pfister Fund

MOUNT PLEASANT UNITED METHODIST CHURCH
Grace Unlimited Program
\$1,626.00
Larry C. Archer Memorial Fund for Autism Awareness and Understanding

Grace Unlimited Program cooking classes
\$500.00
Youth Grant Committee Endowment Fund

MT. CALVARY UMC
God's Hands in Action
\$131.09
Duke Energy Grants Fund

NEXT STEP FOUNDATION, INC
General support
\$5,000.00
Earl and Tina Elliott Advised Fund

OPEN ARMS CHRISTIAN MINISTRIES
General support
\$8,402.75
Norma G. McNeill Fund

OUR FATHER'S ARMS, INC
General support
\$236.00
Kay Aubin Memorial Fund

General support
\$389.00
Our Father's Arms Charitable Fund

PARKE VERMILLION COUNTY HUMANE SOCIETY
Golf Paw Scramble
\$1,000.00
Herman and Coriene White Charitable Fund

POSEY TOWNSHIP VOLUNTEER FIRE DEPARTMENT OF CLAY COUNTY
Purchase of equipment promoting fire safety and emergency response readiness
\$469.00
Posey Township Volunteer Fire Department Endowment Fund

REACH SERVICES, INC.
General support
\$295.00
United Cerebral Palsy Endowment Fund

RICHARD L. ROUDEBUSH VA MEDICAL CENTER
Support for veterans in need
\$1,484.00
Joseph A. Bray Detachment 471 Marine Corps League Endowment Fund

RILEY MEMORIAL ASSOCIATION
General support
\$4,230.00
Clabber Girl Fund for Camp Riley

General support
\$962.10
George I. and Rose E. Felstein Fund

RONALD MCDONALD HOUSE OF INDIANA
Housing support for Clay County families
\$2,000.00
William Harshbarger, Sr. and Anna Eder Harshbarger Memorial Fund; Hendrickson Family Memorial Fund; Kathy Knox Memorial Fund; Larry and Barbara Nolte Community Fund; Dr. Charles and Susie French Family Fund; Patrick J. Knierim Memorial Fund

SACRED HEART CHURCH
Brown bag lunch program at senior citizen housing
\$2,500.00
100+ Women Who Care Community Fund; Janice and Vern Fellows Endowment Fund; Lavelda M. Goble Endowment Fund; Mr. and Mrs. Hugh B. Lee, Jr. Endowment Fund; C. Don and Gail A. Nattkemper Community Fund; Jacqueline H. Phillips Endowment Fund

SALVATION ARMY
General support
\$5,739.00
Sumar Fund for the Salvation Army

General support
\$100.00
Newman Family Endowment Fund

Pathway of Hope
\$4,500.00
David and Luann Bolk Endowment Fund; Mary Ann Conroy and Michael Mueller Endowment Fund; Guille and Cindy Cox Endowment Fund; Vigo County Community Grant Fund; Don and Peggy Decker Endowment Fund

SHRINERS HOSPITALS FOR CHILDREN
General support
\$962.10
George I. and Rose E. Felstein Fund

SPAY-NEUTER LEAGUE
General support
\$4,447.00
Golish Family Memorial Fund for Spay-Neuter League, Inc in Terre Haute Indiana

General support
\$4,451.00
Spay-Neuter League Endowment Fund

ST. VINCENT CLAY HOSPITAL
2018 Festival of Trees
\$3,000.00
Clay County Hospital Health Improvement Fund

2019 Festival of Trees
\$3,000.00
Clay County Hospital Health Improvement Fund

SULLIVAN COUNTY AUDITOR'S OFFICE
Comfort bags for CASA clients
\$2,930.00
100 Women Who Care Sullivan County Fund; Unger Family Fund; Tom and Kay Weitekamp Fund; William and Joanne Wright Family Endowment Fund

SULLIVAN COUNTY BAR FOUNDATION
Sullivan County Supervision Center program
\$2,500.00
Robert and Susan McCammon Endowment Fund; Jordan and Ally Orwig Endowment Fund; Pigg Implement, Inc. Endowment Fund; Sullivan County Community Foundation Board Endowment Fund; Sullivan Family Dentistry Fund

SULLIVAN COUNTY COMMUNITY HOSPITAL
General support
\$394.36
Leo & Virginia Pellum Endowment Fund

General support
\$2,055.00
Sullivan County Community Hospital Foundation Endowment Fund

TEAM OF MERCY, INC
TH Chamber's 12 Days of Christmas WVCF prize package
\$100.00
Lilly Endowment Board Designated Fund

TERRE HAUTE BOYS AND GIRLS CLUB
General support
\$276.00
Terre Haute Boys and Girls Club - Max Gibson Endowment Fund

Capital improvements
\$58.00
Terre Haute Boys and Girls Club - John G. Schmidt Capital Endowment Fund

General support
\$1,030.00
Terre Haute Boys and Girls Club - Max Gibson Endowment Fund

Capital improvements
\$323.00
Terre Haute Boys and Girls Club - John G. Schmidt Capital Endowment Fund

General support
\$1,443.15
George I. and Rose E. Felstein Fund

General support
\$1,578.10
Jessie E. Hickman Fund

TERRE HAUTE HUMANE SOCIETY
General support
\$4,337.00
Humane Society Fund

General support
\$1,112.00
Genevieve E. Klueh Endowment Fund

General support
\$5,060.00
Earl and Hazel Travioli Charitable Endowment Fund

“Clear the Shelter” event
\$3,500.00
Henry and Geraldine Adelman Memorial Fund; Guille and Cindy Cox Endowment Fund; Felstein Grandchildren Fund in Memory of Allen & Millie Felstein

General support
\$100.00
Newman Family Endowment Fund

General support
\$1,000.00
Earl and Tina Elliott Advised Fund

Replace damaged heater
\$1,917.00
Lilly Endowment Fund

TERRE HAUTE JUNIOR TENNIS ASSOCIATION
2018 Mary Ann Stadler Memorial Open
\$1,244.00
Mary Ann Stadler Memorial Fund

THE DISPUTE RESOLUTION CENTER FOR THE WABASH VALLEY
General support
\$279.00
Dispute Resolution Center Endowment Fund

THE LEAGUE OF TERRE HAUTE
General support
\$364.00
Clothes Closet Endowment Fund

General support
\$698.00
League of Terre Haute Endowment Fund

THE TRIBUNE-STAR
General support for Tribune Star Basket Project
\$21,241.00
Tribune-Star Christmas Basket Fund

Volunteer breakfast
\$248.01
Tribune-Star Christmas Basket Fund

TURMAN TOWNSHIP YOUTH FOUNDATION
General support
\$204.00
Turman Township Youth Foundation 2000 Limited Fund

UNION HEALTH FOUNDATION, INC.
General support
\$2,405.25
George I. and Rose E. Felstein Fund

General support
\$3,156.20
Jessie E. Hickman Fund

General support
\$1,000.00
Earl and Tina Elliott Advised Fund

UNITED WAY OF THE WABASH VALLEY
2018 Campaign
\$1,500.00
Earl and Tina Elliott Advised Fund

General support
\$275.66
Ronald G. Reeves Endowment Fund

General support
\$309.00
United Way of the Wabash Valley Endowment Fund

Annual campaign support
\$11,527.00
United Way of the Wabash Valley - Ada Hodge Fund

Operational support
\$5,445.00
United Way of the Wabash Valley Operating Endowment

VA ILLIANA HEALTH CARE SYSTEM
Support for veterans in need
\$1,484.00
Joseph A. Bray Detachment 471 Marine Corps League Endowment Fund

VALLEY PROFESSIONALS COMMUNITY HEALTH CENTER
Health clinic in West Terre Haute
\$50,000.00
Carol M. Starkey Kochell Charitable Fund

VIGO COUNTY EDUCATION FOUNDATION
Support for children in need at Fuqua Elementary School
\$579.00
Brenda Howell Angel Fund

VISITING NURSE ASSOCIATION OF THE WABASH VALLEY
General support
\$833.00
Hospice of the Wabash Valley Endowment Fund

General support
\$284.00
Visiting Nurse Association of the Wabash Valley Inc. Endowment Fund

Hospice of the Wabash Valley
\$500.00
Bruce and Nancy Brentlinger Family Fund

VISITING NURSE ASSOCIATION OF THE WABASH VALLEY, INC.
General support
\$512.37
Edmund J. and Mary R. Dede Fund

General support
\$962.10
George I. and Rose E. Felstein Fund

General support
\$1,212.00
Delmar L. and Betty L. Jones Fund for Hospice

WABASH ACTIVITY CENTER
Purchase and installation of energy efficient window coverings
\$3,618.00
Rose M. Hill Family Endowment Fund; Dr. Paul and Nadine Humphrey Charitable Fund; Jacqueline H. Phillips Endowment Fund; Morris & Patty Salter and Bill & Melba Fenoglio Memorial Fund; Gary W. and Judy A. Schomer Family Endowment Fund; J. Scott and Armeen Williams Fund; Wood Family Fund

WABASH VALLEY COMMUNITY FOUNDATION, INC.
Fund growth
\$442.25
Norma G. McNeill Fund

Gift to Janet Sue's Helping Hands Fund
\$150.00
Newman Family Endowment Fund

WABASH VALLEY FAMILY SPORTS CENTER
General support
\$275.66
Ronald G. Reeves Endowment Fund

WABASH VALLEY GOODWILL INDUSTRIES, INC.
General support
\$4,126.00
Goodwill Industries Endowment Fund

WABASH VALLEY HEALTH CENTER
General support
\$2,172.50
Walter and Katherine Bledsoe Foundation Fund

General support
\$1,291.60
Pfister Fund

General support
\$6,182.00
Saint Ann Clinic Endowment Fund

Renovation and expansion
\$25,000.00
Hulman George Family Endowment Fund; Ray G. Ingram Endowment Fund

WESTERN INDIANA COMMUNITY ACTION AGENCY, INC.
General support
\$249.00
Western Indiana Community Action Agency Fund

WESTMINSTER VILLAGE TERRE HAUTE, INC.
General support
\$50.00
Newman Family Endowment Fund

YMCA OF THE WABASH VALLEY
General support
\$1,950.00
Clay County YMCA Endowment Fund

General support
\$1,578.10
Jessie E. Hickman Fund

Pool re-opening and renovation
\$22,600.00
Delmar L. and Betty L. Jones Family Fund; Lavelda M. Goble Endowment Fund; Lilly Endowment Board Designated Fund; William A. Reed, Jr. Memorial Endowment Fund; Terre Haute Academy of Medicine Endowment Fund

 **Religion**
\$79,241.07

ARCHDIOCESE OF INDIANAPOLIS - UNITED CATHOLIC APPEAL
General support
\$1,500.00
Earl and Tina Elliott Advised Fund

General support
\$10,463.20
Mary Kindrick Memorial Fund

Sacred Heart Parish & St. Ben's churches in Terre Haute
\$1,291.60
Pfister Fund

CENTRAL PRESBYTERIAN CHURCH
General support
\$1,578.10
Jessie E. Hickman Fund

EASTSIDE CHURCH OF CHRIST
Services and programs for elementary-age children
\$248.00
Mary Ellen Adams Endowment Fund for the Eastside Church of Christ

FARMERS' CHAPEL COMMUNITY CHURCH
General support
\$4,568.00
Harlan Farmers Chapel Church Fund

FIRST CONGREGATIONAL CHURCH
General support
\$1,378.30
Ronald G. Reeves Endowment Fund

FIRST PRESBYTERIAN CHURCH OF SULLIVAN
General support
\$471.00
Sullivan Presbyterian Church Mission Fund

The WILL Center

Nothing is more fundamental to community-based living than the ability to get in and out of one's own home. Ramps for Freedom is a collaboration between The WILL Center and Servants at Work, Inc. (SAWs) to build individually designed, custom built and ADA-compliant wooden wheelchair ramps onto the homes of individuals with disabilities. Though the ramps are built entirely above ground with no digging or concrete involved, the ramps are sturdy and an attractive addition to the structures to which they are attached. If, and when, the resident no longer requires access, the ramps can be easily removed - though residents are encouraged to retain the ramp and market it with the home should it open for sale. As an overwhelming majority of residences in Vigo County were constructed before 1970, most homes predate the need for accessibility as a critical component.

To help provide accessibility and freedom for those in community-based living, the Wabash Valley Community Foundation awarded a \$10,000 grant from the Bobby Lee Bennett & Shirley Rosalee Williams Dailey Fund, Community Chest of Terre Haute Fund, Delmar L. and Betty L. Jones Family Fund, Joseph H. and Robin E. Chillington Endowment Fund, Janice and Vern Fellows Endowment Fund, Gibson Family Endowment Fund and Lavelda M. Goble Endowment Fund. The ramps, which are provided free of charge, empower residents to become engaged in the community as they see fit. Once limited in scope and opportunity, residents receiving the ramps find they have freedom to work, volunteer, shop or engage in recreation.

FRANCISCAN RETREATS INC.

General support
\$645.80
Pfister Fund

MAPLE AVE. UNITED METHODIST CHURCH

General support
\$457.00
Don and Jane Fread Memorial Fund

MARY'S CHILDREN, INC.

General support
\$1,112.00
Donna J. Doti Endowment Fund

MEROM UNITED METHODIST CHURCH

General support
\$4,978.00
Merom United Methodist Church
Endowment Fund

SACRED HEART CHURCH

General support
\$1,937.40
Pfister Fund

Religious education for children
\$830.00
Elizabeth Smudde Memorial Fund

SHELburn UNITED METHODIST CHURCH

General support
\$215.00
Richard and Virginia McHugh Fund

SISTERS OF OUR LADY MT. CARMEL

General support
\$4,843.50
Pfister Fund

SISTERS OF PROVIDENCE

General support
\$10,463.20
Mary Kindrick Memorial Fund

General support
\$6,458.00
Pfister Fund

ST. BENEDICT CHURCH

General support
\$2,172.50
Walter and Katherine Bledsoe
Foundation Fund

General support
\$512.37
Edmund J. and Mary R. Dede Fund

General support
\$1,291.60
Pfister Fund

General support
\$1,373.00
Saint Benedict Church Endowment Fund

ST. JOSEPH UNIVERSITY PARISH

General support
\$1,291.60
Pfister Fund

General support
\$212.00
Saint Joseph University Parish Fund

ST. MARGARET MARY CHURCH

General support
\$10,463.20
Mary Kindrick Memorial Fund

ST. STEPHEN'S EPISCOPAL CHURCH

General support
\$1,578.10
Jessie E. Hickman Fund

UNITED HEBREW CONGREGATION FOUNDATION

General support
\$511.20
Felstein Grandchildren Fund in Memory
of Allen & Millie Felstein

General support
\$1,924.40
George I. and Rose E. Felstein Fund

WORLD GOSPEL CHURCH, INC.

General support
\$4,473.00
World Gospel Church Missions
Endowment Fund



A completed ramp provides the resident with accessibility and freedom.

PROVIDING BRIGHT FUTURES

\$715,019.00

BALL STATE UNIVERSITY

\$375.00 – Ashley Norris
Chris Gilbert Memorial Scholarship

\$5,300.00 – Emily Edwards
Elizabeth A. Bledsoe Scholarship

\$1,200.00 – Ashley Norris
*Hazel A. Dennis, R.N. Nursing
Scholarship*

\$7,095.00 – Ashley Norris
*Richard and Veada Akers Medical
Education Scholarship*

\$800.00 – Genevieve Eldred
Jack Lower Memorial Scholarship

BELLARMINE UNIVERSITY

\$650.00 – Gracie Trowbridge
*Dercie E. (Hawkins) Simmons Education
Scholarship*

\$300.00 – Gracie Trowbridge
J.P. Alexander Memorial Scholarship

\$1,535.00 – Gracie Trowbridge
Sara W. Springer Memorial Scholarship

BETHANY COLLEGE

\$750.00 – Tatum Dyar
Dedia M. Sexton Scholarship

BETHEL COLLEGE

\$17,400.00 – Hannah Frady
Lavelda M. Goble Scholarship

BUTLER UNIVERSITY

\$1,000.00 – William Webster
*Staunton High School Alumni
Association Scholarship*

\$1,000.00 – William Webster
*Terre Haute Regional Hospital
Foundation Scholarship*

DANVILLE AREA COMMUNITY COLLEGE

\$24,000.00 – Maclynne Steele
Sherman Education Scholarship

DEPAUW UNIVERSITY

\$800.00 – Alexander Spencer
*Nancy and Dale McKee Family
Scholarship*

EASTERN ILLINOIS UNIVERSITY

\$735.00 – Jacinda Floyd
*Andy and Edythe Turner Memorial
Scholarship*

EASTERN MICHIGAN UNIVERSITY

\$1,000.00 – Abigail Kissinger
*AdvantagePlus of Indiana Federal Credit
Union Scholarship*

FRANKLIN COLLEGE

\$7,319.00 – Madi Short
*Eleanor Jane Dixon Hoilman
Scholarship*

\$600.00 – Jacob Freels
Gill Township Scholarship

ILLINOIS EASTERN COMMUNITY COLLEGE

\$4,000.00 – Braden Edington
Cameron Taylor Memorial Scholarship

INDIANA STATE UNIVERSITY

\$1,050.00 – Logan Nemeth
*Bentrup Family Scholarship for
Mechanical Engineering*

\$1,050.00 – Benjamin Simpson
*Bentrup Family Scholarship for
Mechanical Engineering*

\$500.00 – Sabrina Weir
Beta Sigma Phi City Council Scholarship

\$604.00 – Jibri Taylor
*Betty E. and Curt DeBaun, Jr. Aviation
Scholarship*

\$240.00 – Zachary Holt
*Bill Wood Insurance Adjusters
Scholarship*

\$860.00 – Savannah Hogg
Blair Endowment

\$1,000.00 – Alexis Sherrill
Bob & Olive Sanders Family Scholarship

\$875.00 – Noah Brewster
*Charles Carter Hedrick Memorial
Scholarship*

\$1,500.00 – Christian Nasser
*Charles F. and Nancy A. Bradford
Scholarship*

\$5,500.00 – Hannah Shroyer
*David A. Gilman, Ph.D. Memorial
Scholarship*

\$30,000.00 – Hannah Bunch
*Dr. and Mrs. James O. Conklin
Scholarship*

\$18,000.00 – Seraphina Tucker
Dr. Charlotte M. Boener Scholarship

\$18,000.00 – Jordyn Davis
Dr. Charlotte M. Boener Scholarship

\$27,000.00 – Lauren Holden
Dr. Charlotte M. Boener Scholarship

\$8,453.00 – Chalen Chambers
Dr. Charlotte M. Boener Scholarship

\$1,000.00 – Olivia Stone
Dr. Susan M. Latta, Ph.D. Scholarship

\$5,060.00 – Caiden Jones
Earl and Hazel Travioli Scholarship

\$1,275.00 – Alexis Sherrill
*Garrett A. Pendergast and Stephanie M.
Welsh Police and Fireman Scholarship*

\$750.00 – Sydney Lynch
Harriet Hicks Scholarship

\$32,000.00 – Chloe Hurst
James F. Jackson Scholarship

\$1,200.00 – Avery Deckard
*Janice Hart Modesitt, R.N. Nursing
Scholarship*

\$380.00 – Madison Murphy
Jo Ann F. Johnson Scholarship

\$225.00 – Baylie Cole
*Leon D. and Nancy Shake Huff Sigma
Kappa Scholarship*

\$780.00 – Samantha Lewis
Liane R. Page Memorial Scholarship



\$1,284.00 – Madison Murphy
*Marilyn Wheeler Pendergast Foundation
Fund for Indiana State University
Department of Marketing Scholarship*

\$3,470.00 – Sydney Lynch
Martha & Mary Ann Pedlar Scholarship

\$1,509.00 – Megan Moats
*Robert P. and Carolyn G. Steinbaugh
Scholarship*

\$3,300.00 – Savannah Hogg
Roll and Dora King Moore Scholarship

\$1,000.00 – Grace Hicks
Ronald K Rich CLU CHFC Scholarship

\$475.00 – Dalton Shaw
*Sam J. and Joyce E. Emmert Family
Scholarship*

\$1,500.00 – Nathan Warren
*VFW Post 972 Voice of Democracy
Scholarship*

\$1,550.00 – Lauren Ream
Denise D. and John C. Bell Scholarship

\$600.00 – Lauren Ream
Earl F. Hopkins Scholarship

\$1,000.00 – Lauren Ream
Max & Helen Pierce Scholarship

\$750.00 – Gracyn Switzer
Virginia M. Buell Scholarship

\$800.00 – Lane Hutchison
*Farmersburg Alumni Association
Scholarship*

\$500.00 – Lane Hutchison
Jim Case Scholarship

\$325.00 – Samuel Bowen
*Terre Haute Junior Golf Association
Scholarship*

\$1,050.00 – Audrey Baker
*Alyssa Mechelle Hogue Memorial
Scholarship*

\$30,000.00 – Taylor Borden
*Dr. and Mrs. James O. Conklyn
Scholarship*

\$10,000.00 – Peyton Kirkham
Thomas J. Wright Scholarship

\$10,000.00 – Zoe Frey
Thomas J. Wright Scholarship

\$5,650.00 – Grant Looper
Vigo County Scholarship

\$740.00 – Sydney Lynch
Rolene Moore Scholarship

\$400.00 – Madisson Maffioli
SERCOLBE Scholarship

\$638.00 – Corrin Slankard
*Dr. William W. Drummy Memorial
Scholarship*

\$260.00 – Corrin Slankard
Josh Kackley Memorial Scholarship

\$1,362.00 – Corrin Slankard
*Terre Haute Regional Hospital
Foundation Scholarship*

\$500.00 – Cody Maxwell
*Vigo County Education Foundation -
John Kassis Memorial Scholarship*

\$250.00 – Cole Migliorini
*Rex and Sally Pierce Salutatorian
Scholarship*

\$2,000.00 – Emily Hale
Robert J. Burkle Memorial Scholarship

\$1,000.00 – Kennedy Gofourth
*Diane K. Marheine Memorial
Scholarship*

\$700.00 – Chase Monroe
*Gene K. and Charlotte Taylor Shike
Scholarship*

\$11,700.00 – Kennedy Gofourth
*Leon D. and Nancy Shake Huff
Scholarship*

\$24,000.00 – Chase Monroe
Sherman Education Scholarship

\$13,000.00 – Ryan Robertson
Sherman Education Scholarship

\$1,250.00 – Cassidy Ellis
Floyd and Irene Phillips Scholarship

\$3,650.00 – John McClain
Garrett Pendergast Scholarship

\$500.00 – Natalie Mauk
*Plumbers & Steamfitters Local 157
Scholarship*

\$500.00 – Lindsey Cottrell
*Plumbers & Steamfitters Local 157
Scholarship*

INDIANA UNIVERSITY
\$810.00 – Mary Etling
*Dr. John E. Freed, Jr. Memorial
Scholarship*

\$9,200.00 – Tori Clouse
*Fred A. & Nannie O. Graham
Scholarship*

\$5,500.00 – Olivia Holman
*Gerstmeyer Technical High School
Scholarship*

\$600.00 – Olivia Holman
Lloyd and Lela Ewbank Scholarship

\$1,000.00 – Andrew Nikirk
*Terre Haute Regional Hospital
Foundation Scholarship*

\$960.00 – Taylor Pepperworth
Wright, Shagley and Lowery Scholarship

\$1,580.00 – Joshua Lynch
*Marilyn Wheeler Pendergast Foundation
Fund for Indiana University School of
Law Scholarship*

\$500.00 – Rachael Weir
Jeffrey Alan Cole Memorial Scholarship

\$2,000.00 – Samantha Hyde
*Terre Haute Regional Hospital Medical
Staff Scholarship*

\$500.00 – Mary Gatrell
Beta Sigma Phi City Council Scholarship

\$2,000.00 – Mary Gatrell
*Catherine Elizabeth Grimes Memorial
Scholarship*

\$630.00 – Anna Dubois
Fred Christman Scholarship

\$4,200.00 – Mary Gatrell
Larry Paul Fleschner Scholarship

\$2,000.00 – Anna Dubois
*Laura Brooke McDonald Memorial
Scholarship*

\$1,000.00 – Jennifer Bromm
*Peter Anthony Duong Memorial
Scholarship*

\$225.00 – Zane Reeson
*Senator Herman J. Fanning, Jr. Memorial
Scholarship*

\$1,250.00 – Matthew Hackett
*Randy and Emily Herrington
Community Service Award Scholarship*

\$1,380.00 – Matthew Hackett
*Wabash Valley Community Foundation
Scholarship*

INDIANA WESLEYAN UNIVERSITY
\$1,500.00 – Madeline Sinders
*Albert and Freda Eder DeCoursey
Scholarship*

\$2,500.00 – Madeline Sinders
Mabel Kidwell Scholarship

\$2,700.00 – Madeline Sinders
Roy & Louie E. Lucas Scholarship

IUPUI
\$1,900.00 – Trever Jackson
Erskine Lee and Eula Webb Scholarship

\$2,300.00 – Parker Spears
*Everett E. and Fern A. Tucker
Scholarship*

\$6,000.00 – Trey Reberger
*Harry M. & Rosemary L. Grandey
Scholarship*

\$1,500.00 – Parker Spears
*Vincent G. Sison M.D. Memorial Nursing
Scholarship*

\$800.00 – Ashley Hess
*Dedia M. Sexton Scholarship for the
Indiana School for the Deaf*

\$500.00 – Morgan Clouse
*John and Eunice Organ Valedictorian
Scholarship*

\$13,000.00 – Emma Royal
Sherman Education Scholarship

\$5,550.00 – Emma Todd
*Otter Creek Volunteer Fire Department
Association, Station #1 Scholarship*

\$13,000.00 – Salvatore Leone
Sherman Education Scholarship

IVY TECH COMMUNITY COLLEGE
\$1,750.00 – Carson Lawrence
Bob Romas Memorial Scholarship

\$1,100.00 – Michael Mason
Reid & Nina Ross Scholarship

\$1,100.00 – Abigail Hall
Reid & Nina Ross Scholarship

\$2,175.00 – Hunter Culver
Renis and Fern Knust Scholarship

\$1,600.00 – Devon Deverick
*Sullivan High School Automotive
Scholarship*

\$24,000.00 – Jessica Walls
Sherman Education Scholarship

\$1,000.00 – Zachary Storms
Valentine Family Scholarship

\$13,000.00 – Tabitha Krentkowski
Sherman Education Scholarship

\$13,000.00 – Chance Stewart-Hayne
Sherman Education Scholarship

LINCOLN CHRISTIAN UNIVERSITY
\$2,000.00 – Yu Yamada
Sallie Unger Scholarship Fund

PURDUE UNIVERSITY
\$14,900.00 – Kelsey Heaton
Brent & Helen Rentschler Scholarship

\$4,000.00 – Madison Cundiff
*Harold Paul Loveall III Memorial
Scholarship*

\$500.00 – Jared Frederick
*Dan and Jane Robbins Northview
Marching Knights Scholarship*

\$1,000.00 – Jared Frederick
*Halie's Rainbow-The Halie Hite
Memorial Scholarship*

\$500.00 – Brooke Lueking
*John and Eunice Organ Valedictorian
Scholarship*

\$1,000.00 – Zoe Smith
*Dr. James Harvey Crowder Memorial
Scholarship*

\$500.00 – Alizabeth Arnett
*John and Eunice Organ Valedictorian
Scholarship*

\$500.00 – Benjamin Pirtle
*John and Eunice Organ Valedictorian
Scholarship*

\$225.00 – Alizabeth Arnett
*Michael Ryan Keane Memorial
Scholarship*

\$1,000.00 – Jamie Jones
Rebecca Crowder Cole Scholarship

\$24,000.00 – Kaitlyn Vijil
Sherman Education Scholarship

\$200.00 – Zoe Smith
*Sullivan County Purdue Alumni
Association Scholarship*

\$500.00 – Zoe Smith
*Virginia “Pat” Pirtle Nursing
Scholarship*

ROCHESTER INSTITUTE OF TECHNOLOGY
\$800.00 – Denali Thorn
*Dedia M. Sexton Scholarship for the
Indiana School for the Deaf*

**ROSE-HULMAN INSTITUTE OF
TECHNOLOGY**
\$1,250.00 – Carson Thrift
Avicce McCrae Scholarship

\$2,100.00 – Shannon Sullivan
*Bentrup Family Scholarship for
Mechanical Engineering*

\$7,350.00 – Thaniel Heath
Bernard C. Hoilman Scholarship

\$1,300.00 – Tristen Carrithers
*Marilyn Wheeler Pendergast Foundation
Fund for Rose-Hulman Institute of
Technology Scholarship*

\$7,625.00 – Jackson Hansel
Myrl and Marie Wilkinson Scholarship

\$780.00 – Seth Lakstins
Tom McCarthy Memorial Scholarship

\$1,500.00 – James Goulding
*Wabash Valley Mechanical Contractors
Association Scholarship*

\$600.00 – Garrett Hart
William Fenton Memorial Scholarship

SAINT MARY-OF-THE-WOODS COLLEGE
\$1,800.00 – Kristiana Hickenbotham
Bentrup Family Nursing Scholarship

\$3,900.00 – Kamryn Kikta
*Dr. Robert K. Webster & Wanda
Webster, R.N. Scholarship*

\$1,000.00 – Jonathan Utz
*Rachel Marie Romas Memorial
Scholarship*

\$700.00 – Sydney Landes
*Marilyn Wheeler Pendergast Foundation
Fund for Saint Mary-of-the-Woods
College Scholarship*

\$8,225.00 – Zoe Trausch
Joe & Dorothy Archer Scholarship

\$13,000.00 – Bethany Hall
Sherman Education Scholarship

\$18,500.00 – Katie Lacher
Carol M. Starkey Kochell Scholarship

\$500.00 – Mikayla Hudgens
*Plumbers & Steamfitters Local 157
Scholarship*

\$500.00 – Emily Turner
*Plumbers & Steamfitters Local 157
Scholarship*

TAYLOR UNIVERSITY
\$630.00 – Madelyn Ames
Dorothy Wurst Porter Scholarship

\$345.00 – Madelyn Ames
Rex Buntain Tribune Star Scholarship

\$500.00 – Eden Siples
Albert A. Landes Endowed Scholarship

\$625.00 – Eden Siples
*Brazil Business & Professional Women’s
Club Scholarship*

\$370.00 – Eden Siples
*Clay County Community Foundation
Scholarship*

\$360.00 – Eden Siples
*Richard and Margaret Shattuck
Memorial Scholarship*

\$1,200.00 – Eden Siples
Robert and Barbara Deakins Scholarship

UNIVERSITY OF EVANSVILLE
\$24,000.00 – Emily Langston
Sherman Education Scholarship

UNIVERSITY OF INDIANAPOLIS
\$1,500.00 – Payton Kumpf
*Vincent G. Sison M.D. Memorial Nursing
Scholarship*

UNIVERSITY OF NOTRE DAME
\$5,000.00 – Ethan Kirsch
*Kimberly Jeanne Fowler Wulf
Scholarship for Catholic Education*

\$1,000.00 – Ethan Kirsch
TH 2 ND Scholarship

UNIVERSITY OF SOUTHERN INDIANA
\$2,000.00 – Aysiah Hernandez
*Terre Haute Regional Hospital Medical
Staff Scholarship*

\$500.00 – Jenna Ream
Albert A. Landes Endowed Scholarship

\$750.00 – Jessica Lowder
Dedia M. Sexton Scholarship

\$600.00 – Jessica Lowder
Rob and Lisa Denker Scholarship

\$2,600.00 – Aysiah Hernandez
Roy W. Barnhart Scholarship

\$7,700.00 – Aysiah Hernandez
*Thomas H. & Mary G. Elmore
Scholarship*

\$17,400.00 – Ashtynn Powell
Lavelda M. Goble Scholarship

UNIVERSITY OF TAMPA
\$250.00 – Olivia Rightley
Tina Clem Memorial Scholarship

VINCENNES UNIVERSITY
\$6,000.00 – Nathaniel Scott
Carol M. Starkey Kochell Scholarship

\$1,500.00 – Jayson Mann
*Wabash Valley Mechanical Contractors
Association Scholarship*

**2019 VFW POST 972 VOICE OF
DEMOCRACY AWARDS**
\$1,000.00 – Isabelle Conner
\$1,250.00 – Anna Paugh

**LILLY ENDOWMENT COMMUNITY
SCHOLARS**
First offered in 1998 by Lilly
Endowment Inc., the purpose of the
Lilly Endowment Scholarship Program
is to help raise the level of educational
attainment in Indiana and to leverage
further the ability of Indiana’s
community foundations to enhance the
quality of life of the state’s residents.

Lilly Endowment Community Scholars
are chosen by local volunteers from
their county. They receive full tuition
and an annual book stipend for four
years at a four-year Indiana college or
university.

Clay County
Dylan Boor
*Northview High School
Indiana State University*

Sullivan County
Emma Royer
*Sullivan High School
Rose-Hulman Institute of Technology*

Vigo County
Caroline Fox
*Terre Haute South Vigo High School
Indiana University*

Victoria Mier
*Terre Haute South Vigo High School
DePauw University*

FORWARD THINKERS

The Wabash Valley is fortunate to have a society of bold, forward thinkers – individuals and families who are planning for our community’s future. For many, there is a compelling desire to make a difference – to leave a lasting impact on those closest to us and the community in which we live. This desire to plan for the future leads many to ponder their legacy and consider the best ways in which to fulfill their philanthropic and charitable goals.

In 2019, the Community Foundation saw a record 317% increase in giving over the previous fiscal year. From October 1, 2018, through September 30, 2019, nearly \$7 million in gifts were received from those who chose the Community Foundation as their partner in philanthropy. Aside from those taking advantage of the matching opportunity from Lilly Endowment Inc.’s GIFT VII initiative, the largest contributing factor was the receipt of seven bequests, or planned gifts, which totaled over \$3 million.

A charitable bequest is a provision written in a will or trust directing a gift to be made to a qualified exempt charitable organization when one passes away. One benefit to a charitable bequest is it enables individuals to continue supporting their favorite charities and further the bold work of an agency or organization. Just as individuals include bequests to family or friends in their will, individuals can include a bequest to the Community Foundation to benefit their favorite charitable organization or the community as a whole. In addition, a charitable bequest can help supporters lessen the burden of taxes by providing the estate with a charitable deduction for the value of the gift.

A bequest is perhaps the easiest and most tangible way to create a lasting impact. To many individuals, the most familiar type of bequests are gifts made through a provision in a will or trust. One can make a bequest of a dollar amount, a specific asset, or percentage of and/or from the residue of an estate. Bequests are gifts made through an estate plan and are revocable, meaning one still has the opportunity to make changes in the future.

As with all types of gifts to the Community Foundation, bequests allow individuals to choose which organizations will benefit in perpetuity. Oftentimes, individuals will elect to benefit community organizations they supported throughout their lifetimes or causes close to their heart.

When former Terre Haute resident, June Swango, passed away in April of 2019, she left provisions in her estate plans to create an endowment fund for the benefit of four local organizations. It is because of her commitment to building a brighter future for these organizations that the J. Morton & June K. Swango Fund will provide annual support to the Terre Haute Parks and Recreation Department, TREES Inc., Vigo County Historical Society and Vigo County Parks and Recreation Department.

One supporter included a bequest in her will which resulted in a significant gift to the 14th & Chestnut Community Center Endowment fund. This fund, established by the agency, allows supporters to give gifts of any size to benefit its mission. With the funds from this bequest, 14th & Chestnut will receive an annual distribution in support of its operations, projects and programs.

Another popular option among supporters is creating bequests for the establishment of scholarship funds to benefit area youth. In fact, in 2019, the Community Foundation received nearly \$1.3 million in bequests to generate scholarship funds for students in Clay and Vigo counties. As the funds are invested, the amount of the scholarships will grow and impact the lives of students 10, 20, 60 or even 100 years from now.

Though many supporters have specific ideas as to where they wish to distribute their funds, it is also common to receive bequests from those who simply wanted to give back to the communities that gave so much to them. Of the seven bequests received in 2019, two were for establishing unrestricted discretionary endowment funds. These endowed funds will generate funding for the Community Foundation's competitive grant cycles and each year, the Community Foundation volunteers will carefully and thoughtfully consider what programs and projects to support. Though the receiving organizations will change each year, the bequests will help share the legacy of our supporters' love for community now and for generations to come.

For those who wish to create a legacy beyond their lifetime in the form of bequests, we encourage you to call us at 812.232.2234 or look on the following page for information on how to join The Legacy Society. No confidential details need be disclosed, and you have the option to remain anonymous as a member without public recognition. We are happy to assist you and/or your professional adviser with your gift planning, and thank you for helping to provide bold service and bright futures for the residents of the Wabash Valley.

CONSIDERING A BEQUEST?

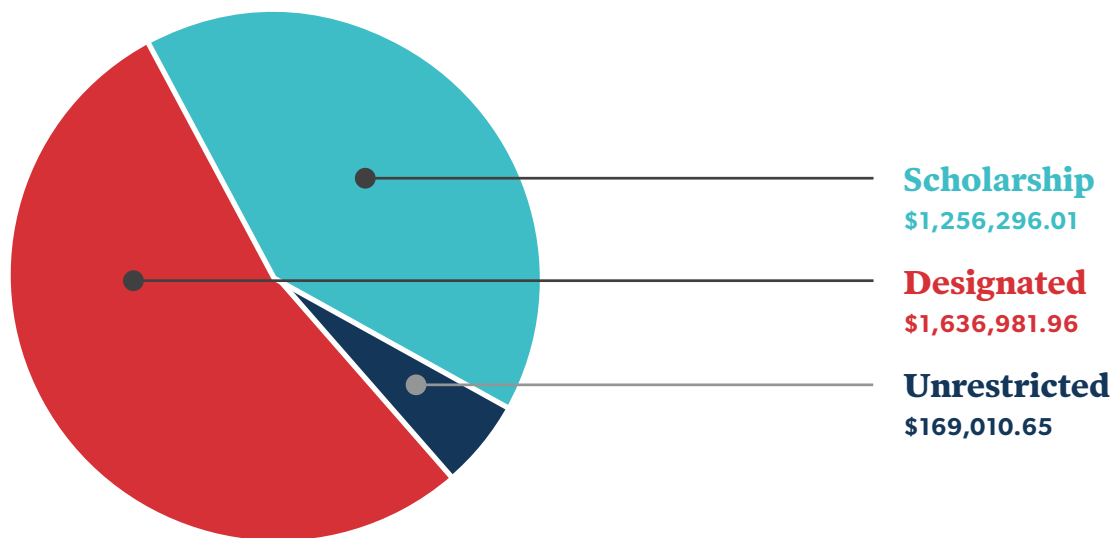
A bequest is one of the easiest gifts to make. With the help of a professional adviser, individuals can include language in a will or trust specifying a gift to be made to family, friends or a charitable organization as part of an estate plan.

A bequest may be made in several ways:

- GIFT OF A PERCENTAGE OF AN ESTATE;**
- GIFT OF A SPECIFIC ASSET; OR,**
- GIFT OF THE RESIDUE OF AN ESTATE.**

It is important to note certain types of property pass outside of a will or trust. These assets require a beneficiary be named by completing a beneficiary designation form. Please contact the Community Foundation at 812.232.2234 to learn more!

BREAKDOWN OF BEQUESTS RECEIVED IN 2019



THE LEGACY SOCIETY



The Legacy Society recognizes individuals and couples who have made provisions in their estate plans to provide a gift to the Community Foundation as a legacy for the Wabash Valley.

Legacy Society members are visionaries who believe in the power of endowment to change lives and transform the communities they call home. By including the Community Foundation in their estate plans, they will create a legacy of bold impact that spans generations and defines the Wabash Valley's future.

For many, a gift from their estate is the most meaningful gift. It preserves their family name and creates a charitable legacy that supports the causes they care about – For **good**. For **ever**.®

It is easy to become a member of the Legacy Society. Simply notify us of your plans to leave a gift to the Community Foundation.

We gratefully acknowledge the following members of our Legacy Society for their foresight and commitment in creating an enduring legacy for the Wabash Valley.

Richard & Veadia Akers*
 Daryl Andrews
Anonymous*
 Roy Barnhart*
 Anonymous
 Margaret Halleck Blair*
 Frank Bledsoe*
 Walter Bledsoe*
 Katherine Bledsoe-Aherns*
 Charlotte Boener*
Anonymous*
 William* & Judith Brett
 Barbara Brugnaux & Carl Bender
 Virginia R. Buntain*
 Dana Burton*

Pat & Mary Cahill
 Anonymous
 Mary Ann Carroll*
 Anonymous
 Nancy Crowder Cochran*
 Judge Silas Coffey*
 Clarabelle Conklin*
 James Conner
 Erna Lucille Cox*
 Marian & Victor Danek*
 Anonymous
 Edmund J. Dede*
 J.W. Dennis
Ms. Patsy Dierdorf*
 William W. Drummy

Wilma Eckerty*
 Mrs. Jerry Einsteadig
Janice Fellows
 Allen & Millie Felstein*
 George & Rose Felstein*
 Barbara Fenton*
 Anonymous
 Sara Lou Joelson Garrard*
 Anonymous
 Virginia M. Ginter*
 Lavelda M. Goble*
 Nancy O. Graham*
 Harry & Rosemary Grandey*
 Mildred E. Harbison*
 Charles Harlan*
 Hermine Haslem*
 Jessie Hickman*
 Anonymous
 Helen E. Hixson*
 Anonymous
 Anonymous*
William Robert Huff*
 Jeff & Shelley Hyatt
 Rudolf Jacobsen*
 Eileen Stith Jensen*
 Betty Jones*
 Walter Kindrick*
Jenny Kloer
 Duane & Mary Alice Klueh
 Endowment Fund
 Carol M. Starkey Kochell*
 Esther Ruddell Ladson*
Helen M. Lemry*
 Anonymous
 Harold P. & Theresa A. Loveall
 Jacqueline Lower
 Louie Lucas*
 Marvin* & Sharon Mattison
 Norma G. McNeill*
 Harold & Malinda Medsker
 Guido & Barbara Meischer*
 Norman Mendenhall*
 Bradley T. Miller
Hazel Miller*

Rolene Moore*
 Sharon Haas Nelson
 Ted & Anna Nesty*
 Chester "Pat" & J. Marie Patton
 Evelyn Peterman*
 Jacqueline H. Phillips*
 Anonymous
 John & Myrtle Price*
 Anonymous
 Jack W. Ragle
 Waneta R. Rector*
 Ron Reeves*
 Helen C. Rentschler*
 Jesse & Martha Reynolds*
 Reid & Nina Ross*
 Fred & Nancy Rubey
 Roberta L. Sackrider*
 Gary W. & Judy A. Schomer
 Anonymous
 Dedia Sexton*
 Cuthbert J. Sherman*
 Jesse Sherwood*
 Anonymous
 Carl A. Smudde*
 Ralph Spelbring
 Randy & Debbie Stevens
June K. Swango*
 Anonymous
 Terry & Beth Tevlin
 Hazel Travioli*
 Everett & Fern Tucker*
 Howard & Norma Unger
 Anonymous
 Richard C. Vining
 Chris & Melinda Wall
 Gwendolyn Wernsing*
 Anonymous
 Coriene White*
 Earl & Pam White
 J. Scott & Armeen Williams
 Anonymous

**Denotes deceased members*

SUPPORTING THE COMMUNITY FOUNDATION



Our supporters care deeply about the Wabash Valley. Often, they have rooted their lives here, made their homes here and sent their children to our local schools. They love this community and want to see it grow and thrive.

When you partner with the Community Foundation, you can support your favorite cause, charity or nonprofit organization through a gift – now or later. Giving to the Community Foundation is flexible in that you can give to an existing fund or establish your own. You can also choose to make a gift to a Community Grant Fund in Clay, Sullivan or Vigo counties, allowing the Community Foundation to build resources that will allow us to make grants that impact the lives of each county's citizens now and in the future. Whichever option you select, be assured your donation will be used as directed.

The Community Foundation is able to accept a wide array of assets as contributions to a fund. Because the Community Foundation is a 501(c)(3) charitable organization, supporters will receive the most valuable tax benefits available under the law. **Ways you can make an outright gift today include:**

CASH is the easiest way to contribute, whether it is actual cash or a check. The Community Foundation's website, wvcf.org, is a convenient way to give using a credit or debit card.

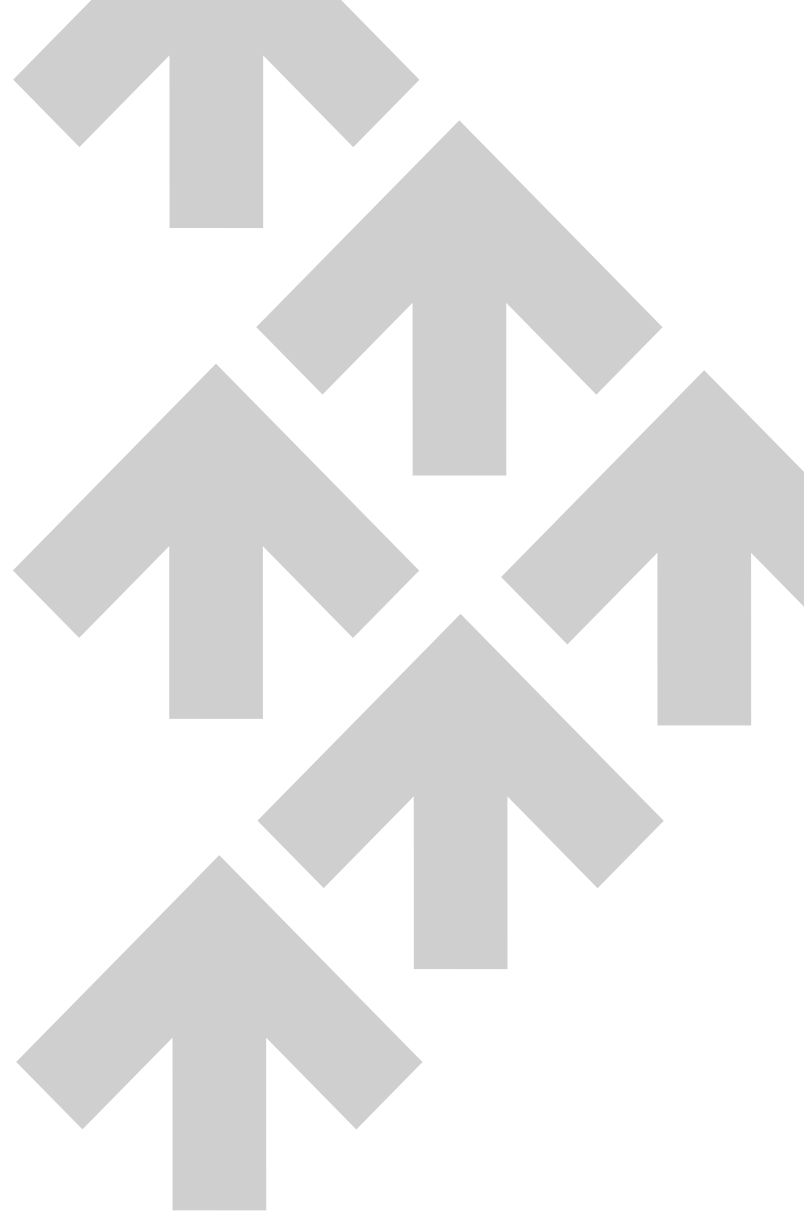
APPRECIATED SECURITIES, when donated, allow you to avoid paying the capital gains tax while providing an accompanying income tax deduction for the current fair-market value.

IRA CHARITABLE ROLLOVER, which is now permanent, provides several benefits. If you are age 70 1/2 and older, you may make a gift up to \$100,000 from your IRA directly to the Community Foundation. You can specify the way your gift will be used for the betterment of the Wabash Valley while paying no taxes on the transfer. You can also use the gift to count against your IRA required minimum distribution (RMD). Congress does not allow you to create or give to a donor advised fund with an IRA Charitable Rollover.

TRANSFERRING LIFE INSURANCE, with the Community Foundation named as the beneficiary and owner of an existing or new policy, allows you an immediate tax deduction, which usually approximates the cash surrender value of the policy.

PRIVATE FOUNDATIONS OR TRUSTS often require significant time and money to manage. By transferring your private foundation or charitable trust to the Community Foundation, the responsibilities for reports and administrative duties will be carried out by the staff of the Community Foundation, which allows you to focus on the charitable purpose. Since the Community Foundation is a public charity and does not pay excise tax, more income is available for charitable purposes.

ITY



A DEFERRED GIFT, made through your will or estate plan, will provide you the opportunity to leave a legacy of giving that will help shape the future of the Wabash Valley. The Community Foundation will work cooperatively with you and your financial planner, attorney or accountant to create an endowment that will ensure that your wishes are properly followed when the gift is ultimately received. **The following are considered to be deferred gifts:**

A BEQUEST OR TESTAMENTARY GIFT in your will is one way you can create your charitable legacy.

A CHARITABLE REMAINDER TRUST allows you or someone you choose to receive an income for life from assets transferred to a trust. Creating a charitable remainder trust also qualifies for a current charitable deduction, the amount of which is determined by the age of the income recipient and the payout rate. When the trust ends, the trust remainder is placed in a permanent fund in your name in the Community Foundation, with the charitable distributions made in accordance with your wishes.

A CHARITABLE GIFT ANNUITY is a simple way to make a substantial gift while retaining the right to a fixed annual income for life. Once the income is no longer paid, the remainder supports the charitable cause you have selected.

A CHARITABLE LEAD TRUST allows the Community Foundation to receive an annual payment during your lifetime or for a specified number of years. When the trust terminates, the principal is returned to you or others you have designated.

REAL ESTATE OR PERSONAL PROPERTY may be given to the Community Foundation. Of course, all gifts qualify for a charitable tax deduction in the year the gift was made in accordance with IRS rules.

GIVING CIRCLE membership is an excellent way to collaborate with like-minded individuals to make a collective difference for neighbors in need.

ACKNOWLEDGMENT

All individuals giving to the Community Foundation are acknowledged for their gift, regardless of size. Should an individual prefer anonymity, the Community Foundation protects the identity and confidentiality of the individual.

SUPPORTERS

A

Dr. Kay Abbott
Mr. & Mrs. Eric M. Abel
Ashley Abney Family
Access Real Estate Company
Dr. Mary Ellen Adams
Ms. Diane Addison
Barry Adelman & Family
Mr. John R. Adkins
Advantage Plus of Indiana Federal Credit Union
Mr. Jameel Ahmed
Chris & Katie Aimone
Ms. Rozanne Aker
Richard & Veda Akers Medical Education Scholarship Trust
Mr. Cary Albin
Dr. Susan Fread Albrecht, Ed.D.
Barbara Alcock
Ms. Marianne Alderton & Family
Mr. & Mrs. Douglas Allaire
Mr. & Mrs. Charles W. Allen
Ms. Pauletta Allen
Ms. Nesli Alp
Mr. & Mrs. Don Altuve
AmazonSmile
American LaFrance Auxiliary of IFA
American Tile & Sales Co., Inc
Amcort Foundation
Anderson Family
Mr. Daryl Andrews
Ms. Deborah A. Angermeier & Mr. Mac Crawford
Anonymous
Mr. & Mrs. David P. Anshutz
Mrs. Margie Anshutz
Mr. & Mrs. Scott Anshutz
Michael & Katherine (Good) Aponte & Family
Mrs. Barbara Archer
Joe E. & Dorothy Archer Scholarship Trust
Mr. Clay Arnett
Art Spaces, Inc
ASCE Student Chapter at Rose-Hulman
Ms. Debbie K. Athey
Bill & P.J. Whitney Aubin
Ms. Debby Ault
Ms. Amanda Austin
Awards & More
John & Amy Ayash
Mr. & Mrs. George J. Azar

B

Ms. Paige K. Babb
Mr. & Mrs. Scott Babb
Mr. & Mrs. Robert Baesler
Baesler's Market
Mary Add & Jim Baker
Ms. Deborah Banfield
Dr. Willie Banks
Mr. & Mrs. Doug Barr
Mr. Eugene G. Bassing
Christina Bauer
Mrs. Anne Baugh
Baxter International Foundation
Dr. Mary E. Beecher
Ms. Karen S. Beeson
Mr. Gary M. Behan
Mr. Travis A. Behem
Ms. Stacey Belanger
Bell Farms
Ms. Carol Bell
Denise & John Bell
Steve & Michelle Bell
Bemis Company Foundation
Ms. Amy Bennett
Office of Mayor Duke Bennett
Fredrick Benson Trust
Mr. & Mrs. Barney Bentgen
Sue Bentrup
Mr. & Mrs. Keith A. Berlen
Beta Omicron Chapter of Delta Kappa Gamma
Beta Sigma Phi City Council
Ms. Krista Beymer
Mrs. Norma Beymer
Ms. Shikha Bhattacharyya
Ms. Sandra Biggs
Ms. Polly Blackburn
Ms. Heather Khan Blasingame
Jean & Don Blasingame
Ms. Pamela Blesch
BMO Private Bank
Mr. Henry D. Bobe
Henry Bobe's Trattoria Italiano, Inc
David & Joyce Boeglin
Joe, Rebecca, Morgan & Talan Boehler
Mr. & Mrs. Benny S. Boes
Mr. & Mrs. Todd J. Boland
Judge & Mrs. David R. Bolck
Dr. & Mrs. James L. Bondi
Dr. Nilah Nicole Bonham OD, PC
Ms. Leigh Ann Bonnett
Mrs. Mica B. Bonomo
Ms. Cathy Booker

Mr. & Mrs. Wayne Booker
Mrs. Karen R. Borders
Nancy Bosc
Jeff Boston Auction Service, LLC
Brad & Susan Bough
Mr. David Bowers
Tony & Jean Bowles
Mrs. Christine Bowman
Mr. & Mrs. Richard Boyce
Angela Boyd
Ms. Mary Ann Boyer
Ms. Diane Braden
Rick & Leanne Braden
Ms. Jacquelyn Bradfield
Mr. Rod Bradfield
Nancy A. Bradford
Ms. Susan Bradford
Dr. & Mrs. Daniel Bradley
Mr. & Mrs. Arnold H. Brames
Brampton Brick, Inc
George & Susan Brattain
Mr. & Mrs. Charles A. Bratton
Brazil Family Dentistry
Brazil Rotary Club
Mr. & Mrs. John Breen
Kathy & David Brentlinger
Nancy Brentlinger
Bridge Club
Curt & Linda Brighton
Christopher Brink
Clarence Brink
Jillian Brink
Jocelyn Brink

James & Nancy Briscoe
Bristol-Myers Squibb Foundation
Rob & Susan Brooks
Family & Friends of JC Brough
Ms. Regina Brough
Brown & Somheil
Brown Family
Brown Jewelers
Brown Veterinary Services, PC
Doug & Judi Brown
JoAnn Brown
Ms. Mary Jo Brown
Mr. & Mrs. Robert R. Brown
Steve & Amy Brown
Steven & Staci Shike Brown
Mr. & Mrs. Timothy P. Brown
Brown, Woodsmall & Hinkel, PC
Mr. Bob Bruce
Judge Barbara L. Brugnaux & Mr. Carl L. Bender
Bryant Insurance Agency, Inc
Ms. Christine A. Buckley
Mr. & Mrs. Thomas R. Buehler
Mr. & Mrs. Pat H. Buell
Bunch Nurseries, Inc
Brian & Brooke Bundy
Ms. Linda Burch
Mr. Nick Burger
Mrs. Anne Burkett
Bryan & Heidi Burkhart
Mr. & Mrs. Steven A. Burkle
Greg, Bobbi & Hailey Burns
Mary Burns

“Tina and I set up an Advised Non-Permanent Fund with the Wabash Valley Community Foundation, Inc. in late 2017 to improve the tax efficiency of our charitable giving. We did this in response to a significant 2017 taxable event and relevant changes in tax law passed by Congress in 2017 that were effective January 1, 2018. Our contribution to this new fund reduced our 2017 federal income tax and provided the time and ability for us to direct these funds to the charities of our choice. This vehicle enables us to bunch charitable contributions from two or three years into one year and also allows us to provide annual consistent support to our chosen charities at an increased level of federal income tax savings.”
-O. Earl & Tina Elliott

Charles R. Butler, Inc
Dr. & Mrs. Richard A. Butler
Mr. Jerry W. Butts
Ms. Bridget K. Butwin
Patricia Butwin

C
Dr. Amber & Mr. Ross Cadick
Patrick & Mary Cahill
James & Ellie Caldwell
Dan & Nancy Callahan
David & Molly Callahan
Camp Navigate
Ms. Amy K. Campbell
Ms. Emma Campbell
Joseph B. Card & Carol J. Wetherell
Carlisle Plaza
Carlisle Valley Irrigation, Inc
Mr. Ed Carne
Joseph & Barbara Carney
Mary Chambers Carroll
Estate of Mary Ann Carroll
Ms. Caroline Carvill
Sue Case
Ms. Maureen Casile
Mr. Stephen Cass
Mr. & Mrs. David P. Cassell
Central Presbyterian Church
Central Wabash Valley Building &
Construction Trades
Ms. Patricia DeCoursey Cercos
Ceres Solutions Cooperative, Inc
CFS Computer Systems
Ms. Sue Chagnon
Tom & Mary Jean Charters
Ms. Kelsey Chase
Mr. Joseph H. Chillington
Chinese School of the Wabash Valley
Inc
Mr. & Mrs. Alan B. Chowning
Mr. & Mrs. Ted Christiansen
Ms. Mary Ann Chubb
Mr. & Mrs. Paul F. Clark
Ms. Emily Clarke
Mrs. Susan Clarke
Clay County Health Department
Mr. & Mrs. David C. Cleveland
Ms. Dawn Clinkenbeard
Paul Cochran
Mr. & Mrs. Danny Coffey
Mrs. Patricia Coffey
Mr. & Mrs. Richard Cole
Tom & Nancy Cole
Ms. Marlene Collett
Ms. Sandra K. Collier
Collins Financial Group Inc
Ms. Lois Collins
Norma Collins
Mr. & Mrs. Randy Collins
Ms. Michelle Comer
Commercial Radio Service, Inc
Mr. James K. Conner

Ms. Jane Conner
Mr. & Mrs. Mark F. Conway
Mrs. Angela Conwell
Mr. & Mrs. Eric Cook
Mr. & Mrs. Gabriel P. Cook
Mr. Tracy W. Cook
Mr. & Mrs. Robert A. Coons
Mr. & Mrs. Thomas O. Corley
Mr. & Mrs. Jim O. Correll
Mr. & Mrs. Don Cossette
America Couch
Mr. & Ms. John C. Coughanowr
Cow Town USA
Mr. & Mrs. Guille Cox
Dr. & Mrs. Harold Cox
Ms. Michaela Cox
Judy Craig
Ms. Renee Crane
Mrs. Carol M. Crawn
Mr. & Mrs. William H. Cress
Ms. Harriet Crews
Susan Crick
Christina Crist
Mr. & Mrs. Frank Crist
Mr. & Mrs. Jeff Cristee
Jim & Beverly Cristee
Mr. & Mrs. John Cristee
Wilbur & Rhonda Crooks
Noah Crosley & Family
Ms. Martha J. Crossen & Mr. Donald E.
Richards
Charles & Sandra Culp
Curt & Rebecca Cunningham
Ms. Jill Curtis
Mr. Lynn & Dr. Deborah Curtis
Customink Fundraising
Ralph & Jan Cutter
Cymer

D
Dr. Sheron J. Dailey
Mr. & Mrs. Ralph H. Dale
Daniels Family Thanksgiving Fund
Mr. & Mrs. Ronald C. Danielson
Mr. & Mrs. Steve Danielson
Mrs. Holden Davis
Ms. Caroline Day
Ms. Randalou Herrington Deacon
Ms. Mary E. DeBard
Employees of DeBaun Funeral Home
Don & Peg Decker
Ms. Susan C. Decker
Mr. & Mrs. Gunther Defant
Delta Theta Tau Sorority, Inc
Ms. Laura DeMers
Mr. J.W. Dennis
Ms. Patricia Dennis
Dentistry Just for Kids
Ann Dever
Tom & Laura Dever
Jaspreet Dhillon
Diamond Barbeque Tavern

Ms. Wendi Dickison
Mr. Richard Dierdorf
John & Rolanda Dinkel
Tom & Susie Dinkel
Distributors Terminal Corporation
Dixie Bee Elementary School
Dixie Bee Elementary School Staff
Dixie Bee Elementary School Retired
Teachers
Ms. Robinne Dodd
Deborah Woerner Dodson & James E.
Dodson, Jr.
Ms. Carol Dones
Mr. & Mrs. Paul Donnelly
Brian & Kim Doti
David & Becky Doti
Robert & Mary Doti
Ms. Sonya Doty
Mr. & Mrs. Tim M. Doty
Ms. Debbie Dressen
Dorothy W. Drummond
Mr. William W. Drummy
Mr. David Dubree
Chip & Mary Ann Dudley
Mrs. Amy A. Duell
Mr. & Mrs. Patrick L. Duffy
Duke Energy Foundation Matching
Gifts Program
Bob & Kelly Dumas
Mrs. Kaylan DuPre
Ms. Amanda Dye

E
Sandi Ballance Eagle
Ms. Katherine Easthom
Eclectic CREW Home Extension Club
Eddies Sandwiches, LLC
Ms. Mildred Edwardson
Dr. & Mrs. James R. Eifert
Jo Einstandig
Norm & Janie Elder
Judge & Mrs. Michael H. Eldred
Mike & Molly Ellingsworth
Mr. & Mrs. Earl Elliott
Maria Elliott & Family
Ms. Keela Ellis
Emily's Walk
Leslie P. Engelland
Ms. Michelle Engle
Nan Engle
Margaret Wilson Englum
Mary & Rob Ennen & Family
Mr. Jeffrey Etling & Dr. Miranda
Goodale
Mr. Joseph H. Evelo
Ms. Teresa D. Exline

F
Ms. Ashley Falconbury
Ms. Johnna Farnsworth
Farr & Associates
Mr. & Mrs. Douglas Fauber
Mr. & Mrs. Gary Faulkner

Fayette Elementary School
Faculty & Staff
Mr. David L. Fell
Janice Fellows
Ms. Kylie Fendrick
Dr. Christi A. Fenton
Mr. & Mrs. Wayne Fett
Tina Ficklin
Ms. Kim Figg
Finzel's Mastertech, Inc
First Farmers Bank & Trust
First Financial Bank
First Presbyterian Church of Sullivan
Leonard & Pam Fischer
Margaret & Ford Fischer
Mr. Robert J. Fischer
Mr. & Mrs. Danny J. Fisher
Ms. Catherine M. Flak
Ms. Rita Flak
Fleschner, Stark, Tanoos & Newlin
Dr. Suzy Fletcher
Mr. & Mrs. Jeff Ford
Committee to Elect Jon Ford
Mr. & Mrs. Chris Foster
Mr. Thomas A. Foster
Mr. Eric Fowler & Ms. Abbey Algiers
Ms. Maryella M. Fox
Mr. & Mrs. Richard T. Frank
Mr. & Mrs. Chris Fread
Mr. & Mrs. John Fread
Ms. Brittany Frederick
Freitag-Weinhardt
French Funeral Home
Dr. Charles & Mrs. Susie French
Mr. & Mrs. Tom Frew
Ms. Karen Frey
Susan M. Frey
Dave & Janet Friedrich
Mrs. Mary Helen Fuhrer
Ms. Annette Fujawa
Mr. & Mrs. Robert G. Fultz
Pete & Opal Fuqua
Marilyn Fuson
Mr. & Mrs. Mark Fuson

G
Ms. Mary Galbraith
Mr. & Mrs. Rich Gallagher
Lucretia Galloway & Family
Mr. & Mrs. Jose P. Garcia, Jr.
Garfield Dinner Girls
Garfield HS Class of 1957
C. H. Garmong & Son Inc
Ms. Janet Garner
Ms. Brianne L. Gassert
Mr. & Mrs. Robert S. Gaston
Gavilon, LLC
Lorraine Geberin
Emily & John Gedrick
Mr. Edward Gehring
Jack Gehring
Elizabeth S. Gelder

Mary C. Gephart
Ms. Piper German
Mr. & Mrs. Daniel C. Gerrity
Mr. & Mrs. John J. Gettinger Sr
Mr. Greg Gibson
Max & Jacqueline Gibson Foundation
Mrs. Patricia J. Gifford
Mr. & Mrs. Mark Gilbert
Douglas & Margot Gillespie
Brett & Dona Gilman & Family
Father Rick Ginther
GlaxoSmithKline Foundation
Mr. & Mrs. Michael Goeller
The Gondeck Family
Bill & Christy Good
Burl & Barb Good
Ms. Suzanne Gorgas
Mr. & Mrs. Andrew S. Goshen
Junior & Sue Goshen
Mr. & Mrs. David Goss
Ms. Jeanne Ann Graham
Ms. Sally Cole Graves
Great Dane
Mrs. Jennifer Greiner
Sally & Gregg Greulich
Bob & Linda Griffin
Mr. Tim Griffith
Bill & Peggy Grimes
David & Pamela Grimes
Mr. & Mrs. James Grimes
Ms. Andrea Grindstaff
Dr. & Mrs. Robert C. Guell
Deanna & Elmer A. Guerri
Mr. & Mrs. Brad S. Gum
Connie Guy

H

Ms. Janet Haag
Hadar Flooring, Inc
Ms. Jane A. Hadley
Ms. Marylee M. Hagan
Troy & Marci Hagan
Mr. & Mrs. Robert J. Hagemeyer
Ms. Linda Ham
Hamilton Center, Inc
Dr. & Mrs. Grant Hammons
Dave & Patricia Hancock
Kris & David Hancock
Hannig Construction, Inc
Mrs. Sarah Hannon
Ms. Nancy Hansell
Mr. & Mrs. Stephen L. Harbaugh
Estate of Mildred E. Harbison
Ms. Susan Hare
Mr. & Mrs. Rick A. Hargrave
Mars & Susan Harlan
The Harlans
David & Carol Harrah
Mrs. Beth Harris
Ms. Judy K. Harris
Mr. & Mrs. Kent Harris
Ms. Mary Beth Harris
Don Harrison

Harshbarger Sharpening
Mr. & Mrs. William F. Hart
Mr. & Mrs. Jeremy L. Hartle
Jim & Nancy Hartman
Mr. Alan Hatch
Mr. Andy J. Hatch
Ms. Barbara Hatch
Ms. Jennifer L. Hatch
Judith Hatch
Ms. Jodi A. Hauer
Ms. Sharon E. Hawk
John, Amy, Sydney & Jace Hawkins
Ms. April Hay
Mike & Lynn Pendergast Hayes
Mr. & Mrs. David Haynes
Larry & Janet Hays & Family
Mrs. Marsha Hedrick
Karen & Rod Heefner
Mr. Nate Heim
Mr. & Mrs. Todd Hein
Mr. & Mrs. Jacob A. Hellmann
Mr. & Mrs. Troy Helman
Troy & Suzanne Helt
Mr. Alva E. Helto, Jr.
Mr. & Mrs. Jonathan L. Hendrich
Hendrich Title Company
Hendricks & Company
Andy & Libby Hendricks
Cathy & Merv Hendricks
Mr. & Mrs. Dale A. Hendricks
Mr. & Mrs. R. Chris Herrington
Ms. Cindra Hiatt
Ms. Jerree Hiatt
Butch & Sandy Hickman
Mr. & Mrs. Gary Hicks
Joe, Susan, Olyvia & Malerie
Higginbotham
Janet Higgins-Jerry
Dr. & Mrs. William Hine
Ernie Hisle
Ms. Leslie E. Hobbs
Ms. Nicki Hobson
Mr. & Mrs. John R. Hochhalter
Jack & Betsy Hoey
Julia & Gerry Hoffa
Ms. Sharon L. Hoffman
Mrs. Judy Hogan
Judy & Terry Hogan
Mr. & Mrs. Chris W. Hogue
David D. Hoilman
Dianne Hoilman
Mr. & Mrs. Kentland Holcomb
Holmes Memorial Chapel Inc
Mr. & Mrs. David A. Holmes
Mr. & Mrs. Michael F. Holmes
Hoopingarner Family
Annette Hoopingarner
Hoosier Energy
Mr. John D. Hopkins
Mrs. Margaret Hopkins
Patricia Horn
Mr. Bryan D. Horsman

Mr. Thomas Hosking
Ms. Kristi Howe
Mark Howell
Kim Howenstine
Ms. Elizabeth Howes
Mr. & Mrs. Ward M. Hubbard
Ms. Del Rae Hublar
Helen & Mike Huddleson
Mr. & Mrs. Jim Huff
Ms. Karissa Huff
Estate of William Robert Huff
Mrs. Barbara B. Huffman
Mr. & Mrs. James P. Hughes
Hulman & Co. Foundation, Inc
Ms. Dana Winklepleck Hunley
Mr. & Mrs. Robert Hunley II
Hunt Monument Works, Inc
Mr. & Mrs. Donald C. Hunt
Mr. & Mrs. Hugh R. Hunt
Mr. & Mrs. James R. Hunter
The Hutchcraft Family
Ms. Amy Hutson
Randy & Debbie Hutts
Mr. & Mrs. Larry D. Hyde

IBEW Local Union #725
Independent Colleges of Indiana
Indiana American Water Company
Indiana Astronomical Society Inc
Indiana Chapter 99's
Indiana Chemical Trust
Indiana Gators
Indiana Gators 08 - Meyer Softball
Team
Indiana Gators 2008
Indiana Gators Select
The Indiana Laborers District Council
Indiana State University
Industrial Supply Company
Mrs. Joan L. Ingram
International Union Operating
Engineers Local 841
Mr. & Mrs. Michael Ireland
Mr. & Mrs. Brian S. Isaacs
Ms. Carol Isbell
Mr. & Mrs. Richard A. Ismail
Ivy Tech Community College

J

Jadcore, LLC
Mr. Timothy S. Jarvis
Dr. & Mrs. Raj Jeevan
Mr. Jason & Dr. Tara Jenkins
Jerrell Consulting & Grant
Administration Services LLC
Mrs. Dorothy W. Jerse
Joe's Italian Foods
Ms. Clarette Johnson
Mrs. Connie Turner Johnson
Dr. & Mrs. Craig Johnson
Mr. & Mrs. Elmer Leon Johnson
Howie & Stacey Johnson
Mr. & Mrs. Kenny Johnson

Ms. Ruth E. Johnson
Joink, LLC
Sharron R. Jolly
Nancy Jonas
Mr. & Mrs. James Jones
Polly Jones
Ms. Stacey Joseph
Ms. Sydney Joyner
Jeff & Elizabeth Jungers

K

Jane Kaer
Kallie
James J. Kane
Ms. Sheila Kaperak
Ms. Billie Kaufman
Ms. Lisa D. Kaufman
The Keelens
Mr. John Keeler
Norman & Carolyn Keiser
Ms. Wendy Keith
Mr. & Mrs. John Keller
Ms. Lisa Keller
Kelly
Mr. & Mrs. John Kelly
Mary & Jerry Kelly
Ms. Mary L. Kelly
Mr. & Mrs. Billy J. Kent
KEO Properties
Mr. Dennis Kerns
Mr. John A. Kesler II
Ms. Deborah Y. Kim
Mike, Nicole, Tyler, Madison & Abigail
King
Mr. & Mrs. Wallace King
Mr. Douglas Kinkade
Christopher, Heidi, Daniel & Will
Kinsella
Mr. Chris Kintzel
Kirby Risk Electrical
Mrs. Lori Kirchner
Mr. Jerry R. Kirk
Mr. Frederick W. Kleinhans
Mr. & Mrs. Joseph Kliejunas
Mr. Duane Klueh
Dr. & Mrs. C. Michael Knepper
Ms. Janella K. Knierim
Mr. Robert A. Knierim
Ms. Brenda Knight
Mr. & Mrs. Richard L. Knotts
Mr. & Mrs. Harold E. Knox
Mr. & Mrs. Michael D. Knust
Ms. Marjorie Kocher
Mr. & Mrs. Randy Koehler
Mr. Michael Konowitz
Mr. Alexander Kor
Ms. Vicki Kosowsky
Phyllis & Chris Koszewski
Ted & Judy Kraly
Mr. & Mrs. Scott R. Kreiter
Jack & Ellen Tucker Krumreich
Mrs. Carolyn A. Kumpf

We felt like the Community Foundation mirrored what our parents practiced throughout their lives: to give back to others. By creating the Virgil and Mary Jo Butts Fund, our parents' legacy can live on. We appreciate Lilly Endowment Inc. matching our gift, and we encourage others to take advantage of this opportunity to give back. -siblings Jerry Butts, Debi Sullivan and Susan Treash

Ms. Celeste C. Kuta
 Ms. Gail Kuta
 Ms. Joyce M. Kuta
 Barbara Kuykendall
 Ms. Debora S. Kuykendall

L

L & L Disposal, LLC
 La Pachanga
 Mr. & Mrs. Terrance LaGrange
 Ms. Sherry E. Lamb
 Ms. Diane E. Lamond
 Lane
 The Langs
 Mr. Kevin Lanke
 Mr. Fred Lash
 Mr. Cary Laxer
 League of Terre Haute
 Learning Tree Montessori
 Samuel Lebold
 Legal Secretaries of Indiana, Inc
 Mr. & Mrs. Larry R. Leinenbach
 John K. Lemry & Helen M. Lemry Estate
 Leone Star Services, Inc
 Bob Levy & Kathy Alexander
 Ms. Fraun Lewis
 Mr. & Mrs. Michael Licari
 Dr. Katelynn R. Moats Liebermann
 Ms. Margaret Liebermann
 Lilly Endowment, Inc
 Matt & Gina Limcaco
 Ms. Rea J. Linville
 Mr. Ryan Liston
 Little White Envelope Group
 The Livingstons
 Mr. & Mrs. William Llewellyn, Jr.
 Susan Freed Lonergan
 Ms. Anna Long
 Mr. & Mrs. Greg R. Long
 Karen & Doc Long
 Mr. Larry Long
 Ms. Mary Long
 Ms. Alison Longlois
 Ms. Sarah Jane Lookabill
 Mr. Cory R. Lookebill
 Ms. Sandra S. Lorenz
 Mr. Dave Lotter
 Dr. Harold P. & Mrs. Theresa A. Loveall
 Dr. Stacy Lowdermilk OD
 Mrs. Jacqueline L. Lower
 Mark & Peggy Lubbehusen
 Mr. Mike Lucas
 Mr. Eric Luecking
 Chris Lueking
 Ms. Freda Luers
 Mr. & Mrs. John S. Lukens
 Ms. Linda L. Lutz
 Courtney S. Lynch

M

Dylan Major & Family
 Mr. & Mrs. Daniel Majors

Mr. Brian T. Mancuso
 Mr. & Mrs. James R. Mann
 John & Deborah Mann
 Mr. & Mrs. Neil L. Marchese
 Michael & Susan Mardis
 Mr. & Mrs. Scot C. Mardis
 Mr. Bruce R. Marheine
 Ms. Jenni Marietta
 Mr. Michael Marks
 Ms. Barbara J. Marlowe
 Ms. Susan L. Marr
 Mr. & Mrs. Michael P. Marra
 Diana & Kevin Martin & Family
 Mr. Donnie Martin
 Mr. & Mrs. James Martin
 Ms. Karen L. Martin
 Steve Martindale
 Frank & Jane Mascari
 Mason Investment Advisory Services, Inc
 Stacy & Travis Mason & Family
 Massage Envy
 Dr. & Mrs. John Mast
 Maui Stop & Shop II
 Jean Mauseil
 Mr. & Mrs. Chris Maxwell
 Larry & Patti Mayfield
 Bob & Susan McCammon
 Ms. Christi McCarthy
 Mr. & Mrs. Conrad W. McCarthy
 Mrs. Cindy McClain
 Mr. Howard McClean
 Mike & Becky McCormick
 George McCreery
 Mark, Traci, Mason & Brook McCreery
 Mr. & Mrs. Mack G. McCullough
 Mr. & Mrs. Michael D. McCullough
 Mr. & Mrs. Matthew W. McDaniel
 Ms. Jamie M. McDonald
 Dr. & Mrs. Rodney McDonald
 McFarland Family
 Mr. & Mrs. Vince McFarland
 Dan & Diana McGrath
 McGuire Excavating & Trucking Inc
 Mr. & Mrs. Bradley R. McKain
 Mr. & Mrs. Timothy A. McKean
 Dale McKee
 Ms. Kelly L. McKee
 McKinney Trash Disposal LLC
 Mr. Michael McKinney
 Mr. & Mrs. Robert E. McLaughlin
 McMahan Law Firm
 Brad McMahan
 Don & Jean McMahan
 Linda McNichols
 Ms. Nancy Measel
 Medical & Dental Staff of Terre Haute Regional Hospital
 Harold & Malinda Medsker
 Laney & Lu Meis
 Mrs. Judith C. Meng
 Merom Improvement Associaton, Inc
 Mr. & Ms. Michael S. Mershon

Mervis Recycling
 Mr. & Mrs. William C. Metzger
 The Miklozek Family
 Ms. Beth S. Miklozek
 Milburn HealthMart Pharmacy
 Ms. Dawne Miles & Mr. Don Wozniak
 Brad & Connie Miller
 Mr. Bradley T. Miller
 Estate of Hazel Miller
 Mr. Joshua Miller
 Mr. & Mrs. Leslie Miller
 Ms. Mary A. Miller
 Mr. Michael Miller
 Rick & Kelli Miller
 Mr. Samuel Miller
 Ms. Sandra Houk Miller
 Mr. & Mrs. Steve Miller
 Miller's Merry Manor
 Terry & Rose Mills
 Mr. & Mrs. Joe A. Milner
 Ms. Rebecca Milner
 Patricia J. Minnis
 Miracle on 7th St. Corp
 Ms. Ali Miranda & Mr. Phil Sicuso
 Matt & Ann Mischler
 Ms. Wendy Miser
 Ms. Lorre A. Mishler
 Mr. & Mrs. Daniel S. Mitchell
 Ms. Jacqueline J. Mitchell
 Jerry Penman Mitchell
 Mr. & Mrs. Russ Mitchell
 Janice L. Modesitt
 Ms. Marcia Modesitt
 Mr. Donald E. Moffitt
 Patrick & Carolyn Monaghan
 Monarch Beverage Co. Inc
 Ms. Karla K. Monroe
 Montgomery Contracting
 Ms. Debra Monts
 Mr. Dustin D. Moore
 Mr. Evan Moore
 Mr. John M. Moore
 Ms. Nicole Moore
 Mr. & Mrs. Harold E. Morgan
 Jerry & Elaine Morgan
 Mr. & Mrs. Kevin Morgan
 Mr. Dustin A. Morris
 Ms. Elsa Morris
 Gary & Kathy Morris
 Dr. & Mrs. John D. Morse
 Mosaic of Terre Haute

Mrs. Lisa Moseley
 Patricia Mozley
 Mr. & Mrs. Jerome R. Mueller
 Ms. Rachel Mullinnix
 Ms. Linda Mundell
 Mr. & Mrs. Timothy L. Munro
 Mr. Curtis Murden
 Mr. & Mrs. John Musselman
 Ms. Andrea Myers
 Mr. & Mrs. Andrew Myers

N

Ms. Anna K. Nagy
 Mr. & Mrs. Santhana Naidu
 Lucy & Peter Nalin MD MBA
 Ms. Aruna Namburi
 Ms. B. Joan Nasser
 Mr. & Mrs. Steven R. Nasser
 Fred & Nancy Nation
 Don & Gail Nattkemper
 Mrs. Emma Jean Neal
 Mr. & Mrs. Earl G. Neiswinger
 Dr. & Mrs. Gary Nesty
 Ted & Anna Nesty Charitable Trust
 Network For Good
 Susan & Gib Neuendorf
 Mr. Fred Nevils
 Nevins Township-Fontanet Action Community Team
 Brian & Mandi Newlin
 Chris & Jenny Newlin
 John S. & Kris Newlin
 TC & Taleen Newlin
 Tom & Laurice Newlin
 Mr. & Mrs. Bradley R. Newman
 Jack & Bev Newman
 Mr. & Mrs. Paul J. Newport
 Mr. & Mrs. John Nichols
 Norma J. Nicosin
 Mr. F. Richard Nicoson
 Matt & Brook Nicoson
 Steve Nicoson
 Nikki's Salon, Inc
 NIPSCO
 Ms. Karen Noble
 Norris Scale Company, Inc
 Deborah Norris
 Ms. Susan Norris
 North American Latex Corporation
 North Ridge
 Northview HS Volleyball
 Mr. & Mrs. Steve Norton



Mrs. Barbara Obenchain
 Tom & Sally Ocasek
 Ohio Valley Gas, Inc
 Mr. Cheyne O'Laughlin
 Mr. Marc O'Leary
 Mr. & Mrs. Marvin Oliver
 Mr. & Mrs. John Olsen
 Ms. Joan C. Orr
 Ally & Jordan Orwig
 Mrs. Barbara Orwig
 Ms. Meredith A. Osburn
 Overland Park Police Department
 COPE
 Chuck & Susie Overpeck

P

Pabst Painting Inc
 Mr. & Mrs. Dennis Pabst
 Mr. & Mrs. Edward A. Pabst
 Ms. Carrie Page
 Mr. Jack Page
 Stephen & Marcia Page
 Mr. & Mrs. Ed Papes
 Mr. & Mrs. Jerald A. Parks
 Judy Parks
 Donna Parsons
 Ms. Alpa Patel & Dr. Thomas Yeagley
 Dr. & Mrs. Chirag G. Patel
 Patrick's Restaurant & Bowling Center
 Ms. Kerry Patterson
 Mr. & Mrs. Robert Patterson
 Mr. & Mrs. Jack E. Pattison
 Ms. Margaret J. Pearman
 Patrick & Kristin (Heefner) Pease
 Family
 Betty Pech
 Jerry & Jane Penry
 John & Jean Penry
 Lisa Pepperworth
 Mr. Alfred Perone
 Lauren Perrelle
 Mr. & Mrs. Rocky A. Perrelle
 Mr. Robert E. Peters
 Jeanine Peterson
 Ms. Kitty K. Pettit
 Petty Pit Stop
 Ms. Jen Petty
 Mary Caye Pfister
 Pfizer Foundation Matching Gifts
 Program
 Mr. Greg Phegley
 Ms. Carolyn Phillips
 Lanier & Sheilah Phillips
 Rita Phillips
 Pi Kappa Alpha
 Ms. Jodi Pickens
 Mr. Phil Pickett
 Piety Farms
 Pigg Implement Sales, Inc
 Randy & Karen Pigg
 David & Jennifer Piker
 Judy Pirtle
 Mrs. Stevie Pirtle

Mr. G. Greg Pitts, III
 Mr. John A. Plasse
 Mr. & Mrs. John E. Pliskin
 Dr. Sara K. Pliskin
 Plumbers & Steamfitters Local 157
 Ms. Sharon Polge
 Ms. Carol A. Posey
 Ms. Erin Potokar
 Mr. Tom Pouliot
 Mr. Barry J. Powell
 Doug & Donna Power
 Mr. & Mrs. Joshua Powers
 Friends at Precoa
 Stephen E. Prevo & Associates
 Darrell & Karen Propst
 Mrs. Eileen K. Prose
 Marshall Prothero
 Kathy Prothero-Wleklinski &
 Donald J. Wleklinski
 Providence HealthCare
 Pullum Real Estate

R

Denis & Suzanne Radecki
 Mr. Jack W. Ragle
 George & Connie Ralston
 Mr. & Mrs. Phillip Randall
 Mr. Rod Ratcliff
 Mr. David Raubuck
 Raybestos Powertrain, LLC
 RBW Logistics Company, Inc
 Ron Readinger
 Reberger Family
 Mr. & Mrs. Thomas K. Reberger
 Mr. & Mrs. Phil Redenbarger
 Monte & Sandy Reece
 Beth Reed
 Ms. Dee Reed
 Mr. Ryan M. Rourke Reed
 Ms. Michelle Reeson
 Mrs. Emily Reeves
 Mrs. Jackie Reeves
 Ronald G. Reeves Trust
 Mr. & Mrs. Gary D. Reid
 Mr. & Mrs. Randy Reinoehl
 Ms. Melissa Reintjes
 Rentschler Ashboro Charitable
 Remainder Unitrust
 Janet Reschke
 C. J. Rhoads Income Tax Service
 S. C. Rhodes
 Ron & Sherrill Rich
 Ms. Lindsey Richardt
 Riddell National Bank
 Riddell National Bank Employees
 Ms. Jenny Ringo
 Rio Grande Full Gospel Church, Inc
 Mr. & Mrs. Philip D. Rissler
 RJL Solutions
 Ms. Susan Smith Roads
 Mrs. Jane Robbins
 Anthony & Ellen Roberts
 Mrs. Terri L. Roberts
 Ms. Judith P. Robinson

Paul & Margaret Roby
 Mr. Danny R. Rockwell
 Chris & Michelle Rodgers
 Nancy & Jay Rodia
 Rodriguez Family
 Debbie Rogers
 Don & Nancy Rogers
 Ms. Gloria J. Rogers
 Mr. & Mrs. Mark A. Roman
 Doris Romas
 Mr. & Mrs. James V. Romas
 Ms. Diana Ross
 Ms. Karen S. Ross
 Richard Rowe
 Mr. & Mrs. Jeffrey P. Roy
 Fred & Nancy Rubey
 Helen A. Ruhl
 Dean & Brenda Rummel
 Mr. & Mrs. Kevin Runion
 Jim & Trudy Rupska
 Mr. & Mrs. Robert E. Rusin
 Mr. Matthew Russell
 Ms. Leah Rutenberg

S

Sackrider & Company, Inc
 Mrs. Carlene Sakbun
 Salesforce.org
 Ms. Peggy Salitros
 Bob & Holly Sanders
 Mr. & Mrs. Richard Sanders
 Mr. Wayne Sanders
 Ms. Lori Sandersier
 Ms. Martha Santus
 Ms. Helen D. Sapp
 Jessica Sater
 Ms. Tonya Sawyer
 Mr. & Mrs. Trevor J. Scamihorn
 Mr. Connor Scanlon
 Mr. & Mrs. Will Schapker
 Mrs. Christine Schellenberg
 Mrs. Wilmadean Schepper
 Mr. & Mrs. Jonathan Scherle
 Drs. Thomas & Norma Schmitz
 Mr. & Mrs. Gary W. Schomer
 Mr. & Mrs. James R. Schonberger
 Schopmeyer Agricultural Services, Inc
 Mr. Chad Schopmeyer
 Mrs. Donna Schopmeyer
 Mr. & Mrs. Joseph R. Schroeder
 Lorna Schroeder
 Mr. & Mrs. Steve Schrohe
 Mark & Suzanne Schuld
 Mr. & Mrs. Kerry Schutt
 Mrs. Cathy Schwab
 Ms. Deb Schwarz
 Scott's Custom Colors, Inc
 Mr. William Scully
 Ms. Jennifer Sears
 Mr. & Mrs. Mark M. Sebree
 Harry & Rosaline Secrest
 Mr. & Mrs. Marvin Seger
 Mr. & Mrs. Kenneth & Rita Senseman

Ms. Sarah B. Senseman
 Ms. Cecelia Seprodi
 Servpro
 Charles Shaffer
 Richard & Alice Shagley
 Rick & Candy Shagley
 Ann Shagley Sharp & Elliott H. Berger
 Ms. Shellina Shearer
 Ms. Melissa Shell
 Mr. & Mrs. Ronald D. Shepherd, DMD
 Ms. Meghan Shidler
 Mr. Bradley Shike & Ms. Paula
 Fricchione
 Charlotte Taylor Shike
 Leroy & Janet Shipley
 Ms. Sandra Siegelin
 Mr. & Mrs. James A. Simmons
 Ms. Glenna L. Simons
 Ms. Margaret L. Simonson
 Marilyn Siner
 Mr. & Mrs. Arnold E. Sklar
 Mr. & Mrs. Thomas E. Slater
 Mrs. Carol Ann Sloan
 Ms. Ruth Sluder
 George & Anne Sly
 Ms. Ann M. Smith
 Mr. & Mrs. Brien Smith
 Carolee J. Smith
 Mr. Ernest Smith
 Mr. & Mrs. Henry T. Smith
 Katy & Jeff Smith
 Mr. & Mrs. Lloyd T. Smith
 Dr. Neil Smith DDS
 Ms. Stacey Smith
 Mr. Donald C. Smock
 Mr. & Mrs. Lanny R. Snow
 Mrs. Margaret Snow
 Mr. Jack R. Snyder
 Ms. Kelley Snyder
 Ms. Jayne Sotak
 Mr. Andrew L. Southard
 Dr. Erik P. Southard & Family
 Chris, Ashley, Avery, Hanah & Morgan
 Sparenberg
 Cary & Paula Sparks
 Jeff & Connie Sparks
 Springer Insurance & Financial
 Services, Inc
 Ms. Kathryn A. Springer
 Henry & Natalie Stadler
 Mrs. Judith A. Stadler
 Mr. & Mrs. Jason Stalker
 Dr. Richard E. Stamper
 Fred & Ginny Stanley
 Linda J. Stanley
 Dennis & Jeri Stark
 State Farm
 Staunton HS Alumni Association
 Steel Dynamics, Inc
 Steimel Communications, Inc
 Carolyn Steinbaugh
 Ms. Heather Stembridge
 Dianne & Robert Stephens
 Mr. & Mrs. Travis Stepro III

Mr. & Mrs. Dan G. Sterner
Mr. & Mrs. Robert W. Sternfeld
Ms. Cheryl Steuerwald
Dr. & Mrs. Randall L. Stevens MD
Bill & Sally Stewart
Renee Stewart
Patty & Mike Stiegelbauer
Drs. David & Kathleen Stienstra
Ms. Erika D. Stitzle
Mr. Fletcher S. Stitzle
Matt Stone Family
Mr. & Mrs. Marty Storey
Mr. & Mrs. Michael Strack
Mr. & Mrs. Kenneth L. Strain
Mr. & Mrs. Donald D. Stroot
Mr. & Mrs. Larry D. Stuckey
Sugar & Spice Florist
Sullivan American Legion Post #139
Sullivan Automotive Group
Sullivan County Abstract, Inc
Sullivan County Animal Hospital
Sullivan County Community Hospital
Sullivan County Farm Bureau, Inc
Sullivan County Historical Society
Sullivan County VFW Post 2459
Sullivan Dairy Queen
Sullivan Elks Lodge #911 Inc
Sullivan Family Dentistry, Gregg W. Smith, DDS & Neil L. Smith, DDS
Sullivan Furniture, Inc
Sullivan HS Class of 1964
Sullivan HS Class of 1973
Sullivan Lodge 263 F&AM
Sullivan Middle School Student Council
Ms. Debi A. Sullivan
Ms. Ashley Summerlot
Beth Sutphin
Ms. Christa Sutton
Ms. Claudia Sutton
John, Lindsey & Fallon Sutton
Estate of June K. Swango
Ms. Gail A. Swartzendruber
Art & Carolyn Sweeting
Mr. Danny Swim

T
Ms. Mary E. Talley
Danny & Claudia Tanoos
Mr. Jim Tanoos
Dr. & Mrs. Robert R. Taube
Carolyn Tausig
Bill & June Taylor
Mr. & Mrs. Bryan W. Taylor
Ms. Cinda Taylor
Ms. Tracie Taylor
TCU College of Education Faculty & Staff
Team of Mercy, Inc
Larry & Martha Tempel
Templeton Coal Company, Inc
Mr. & Mrs. David Templeton
Tom & Carol Templeton
Dr. & Mrs. Philip M. TenBrink

Jack & Lynn Tennant
Mr. William Tennis
Terre Haute Bowling Center
Terre Haute Chamber of Commerce
Terre Haute Economic Development Corporation
Terre Haute Firefighters
Terre Haute Miss Softball America-Indiana Terror Softball Organization
Terre Haute Parks & Recreation Department
Terre Haute Physical Therapy PC
Terre Haute Savings Bank
Terre Haute South HS Class of 1993
Terre Haute South HS Interact Club
Terre Haute South Lady Braves
Terre Haute South STAND Club
Ms. Kelsey Terry
Terry & Beth Tevlin
TGI Fridays
Bobbie Thomas
Mr. & Mrs. John B. Thomas
Mr. Seibert D. Thomas
Tom & Jenny Thomas
Ms. Tracy Lynn Thomas
David, Micah, Keely, Sasha & Alyse Thompson
Mr. & Mrs. Howard H. Thompson
Tom & Clara Lou Thompson
Ms. Patricia L. Thoms
Mr. William H. Thornton
J. L. Timberlake
Don Timberman
Mr. & Mrs. Harold N. Timmer
Mr. & Mrs. Phillip Tofaute
Morris Tomastic
Mrs. Ruth A. Tooloose
Caroline S. Toth
Ms. Bridget Trask
Ms. Deborah Traver
Sue Treadway
Bob & Susan Treash
Ms. Jamie Treash
Mrs. Sandi Treaster
TREES Inc
Mr. & Mrs. James D. Tribble
John E. & Arlene H. Tribble
Tribune-Star
Mr. & Mrs. John Trierweiler
Mr. Matt Trierweiler
The Trierweilers
Ms. Alice Trimble
Mrs. Janet Love Trout
Chris & Jenny Tucker
Jack & Susie Tucker
Ms. Cheryl L. Turner
Ms. Connie Turner
Mr. & Mrs. Jeremiah Turner
Rob, Sherri & Ryan Turner
Mr. Ryan A. Turner
Mrs. Susan Snider Turner
Wade S. Turner
Mrs. Elizabeth Tuttle
Mrs. Amanda Twombly

U
Dr. & Mrs. Gary Ulrich
Howard & Norma Unger
Mark & Suzi Unger
Union Health Foundation, Inc
United Steelworkers of America, Local No. 7441
Mr. Edgar Utterback, III

V
Ms. Patricia A. Valentine
Ms. Darlene Van Meter
Milt & Suzanne Van Reed
Ms. Holly Vanatti
Ms. Tracy Vandergriff
Ms. Pamela G. Varble
Jeanette Vaughan
Jim & Marty Veevaete
Ms. Ann Venable
Ms. Melissa Vickers
Vigo County Association of Actual Past Masters
Vigo County Prosecutor's Office
Vigo County Sheriff's Office
Vigo County Teachers Association
Vigo, Parke, Vermillion Medical Society
Mrs. Barbara A. Vogel
The Volkens Group, LLC
Mr. & Mrs. Matthew J. Voll
Mr. & Mrs. Patrick J. Voll
Mr. & Mrs. Rich Voll

W
Wabash River Development & Beautification Inc
Wabash Valley Art Guild
Wabash Valley Asphalt Company, LLC
Wabash Valley Community Foundation, Inc
Wabash Valley Goodwill Industries, Inc
Wabash Valley Herb Society Inc
Wabash Valley Hospitality Inc
Wabash Valley Mechanical Contractors Association
Wabash Valley Road Runners
Mr. & Mrs. Kent Walker
Mrs. Gina Walls
Ms. Jamie Mitchell Walters
Ms. Jasmine Warren
Jeff & Lisa Warren
Mr. & Mrs. John P. Wasmuth
Dr. & Mrs. Richard Watson
Ms. Laura L. Waugh
Mrs. Lila L. Waugh
Ms. Emma Weaver
Larry Weaver
Eula M. Webb
Daniel & Barbara Weber
Wednesday Breakfast Club at Crossroads Café
Greg & Patti Weinheimer
Tom & Kay Weitekamp
Ms. Susan Welch
Chuck & Roberta Weliever

Charles & Kim Welker
Well Done Marketing
Stephanie M. Welsh & Garrett A. Pendergast
Mr. & Mrs. Brian L. Wesner
West Vigo Community Center
West Vigo HS Faculty & Staff
West Vigo HS Girls Track Team
Western Indiana Community Action Agency, Inc
Western Indiana Credit Union
Westminster Village Terre Haute, Inc
Weston Wabash Foundation
Wheezer's Screenprinting
Jobie Whitaker & Family
Terry & Warda Whitaker
Trent Whitaker & Family
Ms. Anna M. White
Ms. Rebecca White
Tom & Sally Whitehurst
Mr. & Mrs. A. E. Whitlock
Ms. Cora Whitlock & Family
Mr. & Mrs. John W. Whittington
Wildlife Land & Resource Management, LLC
Wiley HS Class of 1963
Ms. Gayle Wiley-Camonte
Mrs. Myra M. Wilkey
Mr. & Mrs. B. Curtis Wilkinson
Mr. George G. Wilkinson
J. Scott & Armeen M. Williams
Jerry & Brenda Williams
Steve & Carole Williams
Mr. & Mrs. Bruce Willis
Wilson Tek
Ms. Teresa K. Wilson
Mr. Curtis A. Winkle
Ms. Marilyn Wirtz
Womans Department Club of Terre Haute, Inc
James & Jane Wood
Ms. Mardi G. Woodward
Mr. James M. Woolsey
Jan & Bill Wright
Mrs. Jean A. Wright
Mr. & Mrs. Larry A. Wright
Mr. & Mrs. Robert L. Wright
Wright, Shagley & Lowery, PC
Thomas Wright Foundation
Wright's Salvage LLC

Y
Mr. Donn J. Yarbrough
Mr. & Mrs. Mike Yatsko
Judge & Mrs. Ernest Yelton
Jimmy John, Linsey, Morgan & Emma Yeryar

Z
Mr. & Mrs. David Zaun
Mr. & Ms. Aaron Zellers
Mr. & Mrs. John D. Zimmerman
Sally Zuel
Mr. Josh J. Zuerner

Memorials

Dolores Abel
Dora May Abel
Dr. K. Simon Abraham
Henry & Geraldine Adelman
J. P. Alexander
Alta Virginia "Ginny" Allen
Sherry Amstutz
Medford Wayne Anderson
Danette Angermeier
Bruce Anshutz
Leonard S. "Steve" Arnold
Helen Avelis
Stephan Baldwin
Elizabeth "Lib" Barnhart
Norma Bauer
Carol Valentine Baum
Birch Evans Bayh, Jr.
Betty Bedwell
Jim Behem
Ralph & Marie Behem
Ralph Behem Jr.
Irene & Bob Berlen
Lena L. Myers Bilderback
Thomas A. Bilyeu
Grant "Doug" Bolen
Gini Bonamico
Calvin Boone
Charles F. Bradford
Richard C. "Dick" Brentlinger
Courtney Broady
John Coyt "JC" Brough
Billy A. Brown
Mary Lou & Laverne Brown
Teresa Brown
Karen Ridge Brunso
Gerri Burskey
Millie & Leonard Busiere
Lucille "Lucy" Callahan
Dr. Mary Ann Carroll
Elizabeth Casey
Alice Chamberlain
Romilda "Millie" Cleghorn
Tina Clem
Edward W. Cole
Jennifer Rusin Cole
Verlene S. Cole
Warren Cole
Jackie Collett
Mary Boland Cooper
John Coveleskie
John Crittenden
Clark & Catherine Dale
Marguerite Dammann
Pamela Mason Daugherty
Bill L. Davis
Betty E. DeBaun
Larry Dick
Gloria Ann Dodd
Ralph & Helen Dowell
Dorothy Drummond
Peter Anthony Duong
Betty Easthom
Guy Edds
Jerry Einstandig
John S. Elmore

Edward L. Emmert
Richard Erney
Benjamin Fairhurst
Abbie Faught
Rachel Faught
Sonner Faught
Jim & Marie Favre
Stephen Flak, Jr.
Betty Fleener
Mae Fleener
Cynthia Anne Ford
Tom Ford
Thomas Francis
Betty Mae Frazier
John & Jean Freed
Vickie French
Mary K. Frewn
Kenneth Wayne Frye
Nancy Frye
Robert & Norma Fultz
Virgil & Marie Fultz
George & Jessie Gainor
Pat Galey
Martha Gallagher
Emily Cox Gedrick
Mari Hulman George
Evelyn "Effie" Giffel
John D. Gifford
Peter Githiri
Armond Gottardi, Jr.
Betty Mildred Gottardi
Carol Goy
Sally Cole Graves
Mary Ann Gregory
Sgt. Dale Russell Griffin
Curtis & Melissa Grigsby
Catherine E. Grimes
Michael G. Grimes
Katherine "Kathy" Hackleman
Margaret Bell Harris
Thomas Harris
Marian Harrison
Ann R. Hartman
James Eddy Hatch
Keith Hawkins
Harvey & Mildred Hayhurst
Carolyn Sue Haynes
Charles Carter Hedrick
Alva & Mary Helton
Mary Rose Hemminghouse
Randy & Emily Herrington
Bert Hoffman
Gary W. Holmes
Mary Hosking
Hugh Curtis Hunt
Janice Jennings
Louis Richard Jensen
John "Jack" Jessell
Jeannie Ji
Jessie & Elmer Johnson
Peter Andrew "Andy" Johnson
Judge Thomas E. Johnson
Marlena Jo Ladd Johnson-Hill
Josh Kackley
William "Bill" Kauffman

R. Jerome "Jerry" Kearns
Donna Mae Keith
Patricia "Pat" Kelly
Mark Kely
Mike Kely
Daniel R. Kennedy
James Frederick Knotts
Eric Knowles
Kathy Knox
Mary Joan Koors
Jack Krumreich
Father Bernie LaMontagne
Richard Lane
Lenne, Lundstrom & Kelly Families
Larry Neal Lindley
Jack Lower
Matthew "Matt" Luecking
John Edward Manley
Diane Marheine
James "Jim" Anthony Mascari
Jane, Wayne & Bob Maynard
Edward McCabe
Laura Brooke McDonald
Mary T. McGuinness
Nancy J. McKee
William "Bill" Meng
Charles Miller
Julia Miller
Linda Miller
Margaret Ann Miller
Shane Miller
Terry Miller
Traci K. Miller
Virginia Miller
Donald Moats
Arbie D. Montgomery
Steve Monts
Teddy Edward Moore
Rev. Mosignor Lawrence J. Moran, Jr.
Dorothy A. Moyer
Stanley & Evelyn Naliborski
John Nash
Candace "Candy" Kay Nasser
Mary Neiswinger
Marie Newman
Michael Newport
Dr. John L. Nichols
Barbara Nicoson
Nancy Nicoson
Sharon L. Nicoson
Jackqueline "Jackie" Sue
Nugent-Blanford
Robert Oehl
Phyllis Pabst
Dr. Robert "Bob" Pabst
Tim Patterson
Ruth Payne
Jenna Kay Perrelle
Phil
Marvin R. Phillips
James & Hazel Piety
John L. Pirtle
Virginia "Pat" Pirtle
Rob Pitts
Steve Posey
William Mitchell Price
John Prox
Louise Prox
Anna Ruth Racop
Constance C. "Connie" Ratcliffe
Abbey Raubuck

Curtis Raubuck
Cindy F. Readinger
Grace "Jerri" Geraldine Redman
William "Bill" W. Reed
Nelson "Dean" Reid
James "Jimmy" E. Rentschler, II
Monte Riggs
Mark Wayne Risinger
Judith Ann Robsinson
Larry Robinson
Russell & Mildred Rockwell
Dr. Rick "Doc" Rodgers
Camden Scott Romas
Rachel Marie Romas
Luella Rossico
Darrell Roundtree
JoAnne Rowe
Brad Rusin
Aaron Rutenberg
Virginia Saberton
Joy Sacopulos
Bob & Olive Sanders
Oscar Sanders
Garrett Sands
Eugene L. Saucerman
Alva & Nadine Schepper
Marsha Schoen
Justin Scott
Dr. Noble H. Sevier, II
Earl W. Shagley III
Henry Monroe Shagley
Wanda L. Sheeder
Lola Shepherd
Elizabeth Sherer
Wayne C. Sherer
Gene K. Shike
Susan Padgett Sickora
June Randolph Sitarski
Haley Kathryn Smith
Jack Evan Smith
Jackie Lee Smith
Lowell W. Smith
Patricia Smith
Patsy Smith
Rose Ann Snapp
Robert Snedeker
James "Jim" Spence
Tom Stewart
Earl & Betty Strain
Rev. Elmer & Mary Strain
Dr. William Strecker
Linda Sturtevant
Margie Suter
Vicki Switzer
Cameron Taylor
Carolyn Taylor
Norma J. "Ronni" Templeton
Debbie Bedwell Terrell
Eleise Thiemann
Delores Thomas
John & Ruth Thomas
Bill Thoms
Marie O'Connell Thoms
John Louis Tofaute
Donald Trendelman
Guy & Ann Tribble
Howard & Eulta Turner
Lucille Turner
Phyllis Dye Turner
Geraldine Ullery
Linda K. Vickers

Ellen Marie & Noah Lee Voll
 Robert & Florine Voll
 Timothy Walker
 James "Jim" Waugh
 Doyne & Paul Weir
 Michael Andrew Pick Wendland
 Albert Wild
 Laura R. Wild
 Gertrud & Murrel Wilkinson
 Thomas & Alma Wilson
 Kimberley Jeanne Fowler Wulf
 Dr. Karla Zody

Tributes

Jade Avelis
 Douglas Bates
 Nancy Bradford
 Susan Bradford
 Terri Brough on her birthday
 James & Linda Brown
 Patrick Cahill on receiving the Chapman Root award
 Charles "Ted" Cochran
 Jack Cochran
 Richard "Dick" Ellis Cole on his 75th birthday
 Thomas Edward Cole on his 80th birthday
 Donna Doti
 Sam & Joyce Emmert's 50th wedding anniversary
 Peggy Grubb
 Jim Hartman on his 90th birthday
 Judy Hatch on her 75th birthday
 Brianna Hubble on her birthday
 Marissa Manlove on her retirement
 Harold & Malinda Medsker
 Laney & Lu Meis
 Linda & Mike Morris
 Jack Page for Father's Day
 Curt Pendergast
 Jack Ragle
 Benet Rutenberg
 Rick Shagley on receiving the Marilyn Pendergast Award
 for Outstanding Dedication
 Charlotte Taylor Shike for Mother's Day
 Carolyn Steinbaugh
 Terry Tevlin on his retirement
 Gary Ulrich, Jr.
 Sarah Elizabeth Weaver

FUNDS



CLAY COUNTY

100 Women Who Care Clay County Fund

Beulah Ahlemeyer Memorial Fund

Bill & Edna Ahlemeyer Endowment Fund

Harley & Thelma Andrews Family Fund

Jeffrey A. & J. Shan Bell Memorial Fund

Steve & Michelle Bell Fund

Lewis & Eva Berry Endowment Fund

***Jack & Diane Braden Endowment Fund**

Brazil Rotary Community Fund

Clyde & Kathryn Bullerdick Memorial Fund

***Virgil & May Jo Butts Family Fund**

L.T. & Janice K. Clark Family Endowment Fund

Clay City Lions Community Fund

Clay Civic Memorial Foundation Community Fund

Clay County Community Foundation Board Endowment Fund

Clay County Community Grant Fund

Clay County Farm Bureau Endowment Fund

Randy & Cathy Collins Endowment Fund

Coughanowr Insurance Inc. Endowment Fund

Merle & Louise Crafton Family Endowment Fund

Albert & Freda Eder DeCoursey Community Fund

***Emry's Generation Fund**

Jeffrey Etling & Dr. Miranda Goodale Endowment Fund

Eva's Generation Fund

Anna Ferrell Endowment Fund

Dr. Charles & Susie French Family Fund

Dr. Hal & Muriel Glidden Family Fund

Guys Who Give Clay County Endowment Fund

Paul & Rita Harden Family Fund

Don & Marian Harrison Endowment Fund

William Harshbarger, Sr. & Anna Eder Harshbarger Memorial Fund

Kenneth & Eleanor Hauser Endowment Fund

***Jon & Sandy Hendrich Endowment Fund**

Hendrickson Family Memorial Fund

Hostetler Family Fund

***William Robert Huff Memorial Fund**

Norman & Carolyn Keiser Endowment Fund

Patrick J. Knierim Memorial Fund

Kathy Knox Memorial Fund

William & Mary Margaret Kocher Memorial Fund

***Kumpf Family Endowment Fund**

H. Michael Lawson Community Fund

Richard & Sue Lightfoot Endowment Fund

Lilly Endowment Board Designated Fund for Clay County

Lilly Endowment Fund for Clay County

McCullough Family Fund

John E. & Karen E. Mercer Family Endowment Fund

Miller & Stewart L.L.C., CPAs Clay County Community Fund

Traci K. Miller Memorial Fund

Herschel & Josephine Morge Endowment Fund

Fred Nevils Family Fund

***Donald & Norma Nicosin Endowment Fund**

Larry & Barbara Nolte Community Fund

Melvin E., Rosemary & Eugene Nolte Family Memorial Fund

Popcorn Festival Committee Fund

Ronald & Sarah Reagan Family Fund

Tom & Lynne Reberger Endowment Fund

Utilities District of Western Indiana REMC Community Fund

Riddell National Bank - John H. Riddell Memorial Fund

Jim & Alice Romas Endowment Fund

Gilbert & Wilmadean Schepper Family Fund

Mr. & Mrs. Fletcher D. Stitzle Endowment Fund

***John & Vicki Switzer Community Fund**

Larry & Martha Tempel Family Community Fund

***Tommy & Clara Lou Thompson Community Fund**

Guy & Anne Tribble Family Fund

Wabash Valley Pharmaceutical Society Fund - Clay County

Ernest & Mary Yelton Community Fund

Richard & Hila Zimmerman Endowment Fund

***Denotes Funds created in Fiscal Year 2019, October 1, 2018 through September 30, 2019.**

SULLIVAN COUNTY

100 Women Who Care Sullivan County Fund
Allomatic Products Community Enrichment Fund
Lois A. Andrews Foundation Fund for Sullivan County
Black Beauty Sullivan County Community Fund
***Henry D. Bobe Community Fund**
Kenneth & Mary Conner Endowment Fund
Guy & Wilma Edds Charitable Endowment Fund - Gammie's Closet
First National Bank & Trust Employee Fund
Garrett Family Fund
James & Mary Halberstadt Endowment Fund
Bill & Lorene Hankins Endowment Fund
***Larry & Janet Hays Endowment Fund**
Rusty & Margie Hays Endowment Fund
Don & Nancy Hunt Community Fund
***Tara & Jason Jenkins Endowment Fund**
JJJ & K Endowment Fund
William Ferd & Connie Pleasant Johnson Memorial Fund
Dick & Janice Knotts Fund
***Jack Krumreich & Ellen Tucker Endowment Fund**
Milton L. & Ruth Pleasant Kult Fund
Lilly Endowment Board Designated Fund for Sullivan County
Lilly Endowment Fund for Sullivan County
John & Yvonne Longfield Endowment Fund
Dr. Allen & Shirley Lueking Family Fund
Lana Martindale Memorial Fund
Larry & Patti Mayfield Family Endowment Fund
Robert & Susan McCammon Endowment Fund
Harold & Malinda Medsker Endowment Fund
Milam Family Endowment Fund
Jordan & Ally Orwig Endowment Fund
***Pigg Family Charitable Giving Fund**
Pigg Implement, Inc. Endowment Fund
Lorene B. & Malcolm Pigg Endowment Fund
***Lloyd & Michele Smith Endowment Fund**
William Snyder Endowment Fund
Sullivan County Community Foundation Board Endowment Fund
Sullivan County Community Grant Fund
Sullivan Family Dentistry Fund
Sullivan Rotary Club Endowment Fund
Templeton Coal Company, Inc. Fund for Sullivan County
Unger Family Fund

Tom & Kay Weitekamp Fund
William & Joanne Wright Family Endowment Fund

VIGO COUNTY

100+ Women Who Care Community Fund
Henry & Geraldine Adelman Memorial Fund
Andres Family Endowment Fund
Dr. Bruce Philip Anshutz Memorial Fund
***Leonard "Steve" Arnold Memorial Fund**
Robert & Julie Baesler Community Fund
Bobby Lee Bennett & Shirley Rosalee Williams Dailey Bennett Fund
Bentrup Family Endowment Fund
***Robert & Irene Berlen Endowment Fund**
Walter & Katherine Bledsoe Family Endowment Fund
David & Luann Bolk Endowment Fund
Brighton Family Fund
Joseph H. & Robin E. Chillington Endowment Fund
Joseph E. & Martha Jean Claretto Endowment Fund
Mary Ann Conroy & Michael Mueller Endowment Fund
Erna L. Cox Community Fund
Guille & Cindy Cox Endowment Fund
Victor & Marian L. Danek Endowment Fund
Don & Peggy Decker Endowment Fund
Susan Decker & Vicki Kosowsky Community Fund
Thelma Maxine Dever Memorial Fund
Thomas & Susan Dinkel Family Fund
David & Becky Doti Family Fund
Robert R. & Dorothy W. Drummond Community Fund
Gene & Wilma J. Eckerty Memorial Fund
***Eifert Family Fund**
Jerry & Jo Einsteadig Community Fund
O. Earl & Tina Elliott Family Endowment Fund
Gary & Nancy Faulker Fund
Janice & Vern Fellows Endowment Fund
Allen & Mildred D. Felstein Charitable Endowment Fund
First Financial Bank Community Endowment Fund
Thomas L. & Connie L. Francis Charitable Endowment Fund
Gibson Family Endowment Fund
Lavelda M. Goble Endowment Fund
Guys Who Give Community Fund
Steve Harris Memorial Endowment Fund
Hartman Brown Fund
Andy & Libby Hendricks Endowment Fund
***Dale & Carla Hendricks Endowment Fund**

Herrington Family Endowment Fund
Rose M. Hill Family Endowment Fund
Hulman George Family Endowment Fund
Dr. Paul & Nadine Humphrey Charitable Fund
Ray G. Ingram Endowment Fund
Delmar L. & Betty L. Jones Family Fund
Landsbaum Endowment Fund
Mr. & Mrs. Hugh B. Lee, Jr. Endowment Fund
Salo & Mary Levite Endowment Fund
Lilly Endowment Board Designated Fund
Lilly Endowment Fund
Gershon H. & Janice K. Loeser Endowment Fund
Lukens Family Endowment Fund
Diann & Craig McKee Community Fund
Medical Heritage Society Fund
Meis Family Endowment Fund
MillerWhite Community Endowment Fund
The Nation Fund
C. Don & Gail A. Nattkemper Community Fund
Mae C. & Jack H. Page Endowment Fund
Alpa Patel & Thomas Yeagley Community Fund
PMC Fund
Garrett Pendergast & Stephanie Welsh Community Fund
Jeff & Jennifer Perry Fund
Jacqueline H. Phillips Endowment Fund
Piker Family Fund
Carl W. ("Bang") & Josephine M. Price Memorial Fund
***Cindy F. Readinger Endowment Fund**
William A. Reed, Jr. Memorial Endowment Fund
***Riley Community Center Permanent Fund**
Don & Nancy Brattain Rogers Community Fund
Leon & Roberta Sackrider Endowment Fund
Morris & Patty Salter and Bill & Melba Fenoglio Memorial Fund
Gary W. & Judy A. Schomer Family Endowment Fund
***Alden & Lorene Smith Memorial Endowment Fund**
Donald O. Springman Endowment Fund
Paul M. Stanley Community Fund
Templeton Coal Company, Inc. Fund for Vigo County
Bill & Marci Gropp Tennis Fund
Terre Haute Academy of Medicine Endowment Fund
Terry & Beth Tevlin Community Fund
John Tipton Memorial Fund
Linda K. Vickers Memorial Fund

Vigo County Community Grant Fund
Richard C. Vining Community Fund
Wabash Valley Asphalt Endowment Fund
Wabash Valley Pharmaceutical Society Fund - Vigo County
Chris & Melinda Wall Community Fund
Wernsing Fund
White Family Endowment Fund
Myrl & Marie Wilkinson Community Endowment Fund
J. Scott & Armeen Williams Fund
Wood Family Fund
Wright, Shagley & Lowery PC Community Fund
David & Joan Zaun Endowment Fund



CLAY COUNTY

Brazil High School Class of 1957 Fund
Clay City Community Recreation Fund
Connley-Hall-Rentschler Fund
Rolene Moore Fund
Targeting Hunger in Clay County Fund

SULLIVAN COUNTY

Carlisle Community Endowment Fund
Cemetery Preservation Endowment Fund
Joe & Betty Dukes Family Endowment Fund
JAC (Job & Career) Fund
Merom Community Endowment Fund
Lorene B. & Malcolm Pigg Beautification Fund
Harry J. Stanley Memorial Fund for Children of Sullivan County
Sullivan Business & Professional Women's Club Endowment Fund
Youth Endowment for Sullivan County Fund

VIGO COUNTY

100+ Women Who Care Endowment Fund
Altrusa Foundation Fund
Backpack Endowment Fund
Community Chest of Terre Haute Fund
Erna L. Cox Educational Fund
Encouraging Access & Success in Education Fund
Larry P. Fleschner Good Samaritan Fund
Charles Harlan Fund for the Hull Cemetery
Helping Hand Endowment Fund
Baldwin E. Kloer Memorial Fund
Carol M. Starkey Kochell Charitable Fund
James R. Piker, Ada A. Piker & Virginia M. Ginter Memorial Fund
Sara Lou Fund
Tribune-Star Christmas Basket Fund
Volunteer Action Center Endowment Fund

Wabash Valley Long Term Disaster Recovery Fund
Youth Grant Committee Endowment Fund

ADVISED FUNDS

CLAY COUNTY

Carbon Town Fund
Clay Civic Memorial Foundation Advised Fund
Clay County Hospital Health Improvement Fund
Judge Silas D. Coffey Memorial Fund

SULLIVAN COUNTY

James & June Conner Civic Endowment Fund
Dugger Community (Jefferson/Cass Townships) Endowment Fund
J. Carter Hale Memorial Fund
Lloyd R. "Scotty" & Helen Irvin Memorial Fund
Sullivan County Ag Day Fund

VIGO COUNTY

Richard Alcock Memorial Fund
Marilyn Scott Allen Fund
Primo A. & Sylvia A. Andres Fund
The Barnabas Fund
Georgia Marie Bird Memorial Fund
Bruce & Nancy Brentlinger Family Fund
Patrick & Mary Cahill Endowment Fund
Jim & Beverly Cristee Fund
Jerry & Jo Einsteadig Endowment Fund
Earl & Tina Elliott Advised Fund
O. Earl & Tina Elliott Advised Fund
Emily's Walk on the Wabashiki Fund
***Fund for the Swope**
Gilbert & Virginia Gambill Charitable Endowment Fund
Guys Who Give Endowment Fund
The Halo Fund
Jason A. Harvey Memorial Endowment Fund
James Eddy Hatch Endowment Fund
Terry Ho, M.D. Memorial Fund
Jackie's Garden Fund
W. Edward & Connie K. Jukes Family Fund
Thomas L. & Patricia W. Kelly Fund
Kiwanis Club of Terre Haute Fund
Kiwanis Club of Terre Haute Project Fund
Fred & Nancy Nation Endowment Fund
Newman Family Endowment Fund
J. Laurence & Barbara A. Passmore Charitable Fund
Jack & Joann Ragle Charitable Endowment Fund
Henry Monroe Shagley Memorial Fund
Haley Kathryn Smith Memorial Fund
Mary & Don Smith Fund

Terre Haute Bar Association Endowment Fund
Terre Haute Cityscape Fund
Terre Haute Day Nursery Association Endowment Fund
Ralph & Helen Tevlin Endowment Fund
Terry & Beth Tevlin Family Endowment Fund
Veterans of Foreign Wars, Post 972 Charitable Endowment Fund
Richard C. Vining Endowment Fund
Votmer Family Endowment Fund
Herman & Coriene White Charitable Fund

DESIGNATED FUNDS

CLAY COUNTY

Angels for Eastside Fund
Roy E. Brown Memorial Fund
Forest Park Endowment Fund
Mauri & Janice Modesitt Dictionary Fund
North Clay Student Art Collection Endowment Fund
Penman Girls Operating Endowment Fund
Marion & Marie Kattman Sendmeyer Endowment Fund for Poland Historical Chapel

SULLIVAN COUNTY

Angels for Sullivan Elementary School Fund
Angels for Sullivan Junior High School Fund
Kay Aubin Memorial Fund
Brown Baggers School Food Program
CAPE Endowment Fund for Sullivan County
Paul Edmiston Agriculture Education Fund
Richard & Virginia McHugh Fund
Norma G. McNeill Fund
Leo & Virginia Pellum Endowment Fund
Irwin & Mary Reiss Operating Endowment Fund for the Sullivan County Community Foundation
Rev. Willis & Virginia Ross Fund for the Sullivan County Historical Society
Jesse R. Sherwood Fund
Stair Steps to Success Endowment Fund
Fund to Honor Coach Paul E. Weekley

VIGO COUNTY

Mary Ellen Adams Endowment Fund for the Eastside Church of Christ
Danette Angermeier Memorial Fund
Anonymous Endowment Fund
Larry C. Archer Memorial Fund for Autism Awareness & Understanding
Col. Peter Baer Memorial Fund
Walter & Katherine Bledsoe Foundation Fund
Ashley Laughlin Felstein Boyll Fund
Rod Bradfield Art Fund
Joseph A. Bray Detachment 471 Marine Corps League Endowment Fund
***John Coyt "JC" Brough Memorial Fund**
Mary Ann Carroll Fund for the Sheldon Swope Art Museum
Chinese School of the Wabash Valley Fund
Clabber Girl Fund for Camp Riley
John Rogers Cox Preservation Fund
Edmund J. & Mary R. Dede Fund
Susie Dewey Fund for the Sheldon Swope Art Museum
Donna J. Doti Endowment Fund
Norma Lemmon Evans Fund for the Sheldon Swope Art Museum
Fayette Elementary School Dictionary Project Fund
Felstein Grandchildren Fund in Memory of Allen & Millie Felstein
George I. & Rose E. Felstein Fund
Thomas L. & Connie L. Francis Endowment Fund for the Sheldon Swope Art Museum
Don & Jane Fread Memorial Fund
Fuqua Dictionary Project Fund
Kelly Fuqua Memorial Fund
Golish Family Memorial Fund for Light House Mission
Golish Family Memorial Fund for Spay-Neuter League, Inc. in Terre Haute Indiana
Goodwill Industries Tennis Family Dictionary Fund
Harlan Farmers Chapel Church Fund
Hermine M. Haslem Endowment Fund for the Sheldon Swope Art Museum
Nancy Hellmann Educational Fund
Jessie E. Hickman Fund
Brenda Howell Angel Fund
Humphrey Honor Award Fund
Jamie Jacobsen Memorial Endowment Fund
Eileen Stith Jensen Endowment Fund for the Sheldon Swope Art Museum
Joink Dictionary Fund for Lost Creek Elementary School
Delmar L. & Betty L. Jones Fund for Hospice
Mary Kindrick Memorial Fund
Duane & Mary Alice Klueh Fund
Genevieve E. Klueh Endowment Fund
"Blessed for Another Day" - Matt Luecking Memorial Endowment Fund
John & Karen Lukens Dictionaries for Davis Park Elementary School Fund
Julie McLaughlin Memorial Fund
Harriet McNeal Fund for the Sheldon Swope Art Museum
Esther MacBain Meeks Memorial Fund for Children's Literature
Guido & Barbara Miescher Endowment Fund
Chuck Miles Memorial Fund
Miriam Fund for the Sheldon Swope Art Museum

Marilyn Wheeler Pendergast Foundation Fund for the Sheldon Swope Art Museum
M. Evelyn Peterman Endowment Fund
Pfister Fund
Robert S. Ratcliffe Memorial Fund
Ronald G. Reeves Endowment Fund
Scottish Rite Preservation Fund
Shagley Family Fund for the Sheldon Swope Art Museum
Elizabeth Smudde Memorial Fund
Mary Ann Stadler Memorial Fund
***J. Morton & June K. Swango Fund**
Robert & Carolyn Steinbaugh Fund for the Sheldon Swope Art Museum
Susan Templeton Scott Dictionary Project Fund
Terre Haute Academy of Medicine Fund
Terre Haute South - One More Time for the Class of '79 Fund
Terre Haute Rotary Club Endowment Fund
Earl & Hazel Travioli Charitable Endowment Fund
Barbara A. Vogel Fund for the Sheldon Swope Art Museum
Wabash River Development & Beautification, Inc. Nonpermanent Fund
Wabash Valley Dictionary Project Endowment Fund
Myrl & Marie Wilkinson Endowment Fund
Karen J. Wright Memorial Fund

AGENCY ENDOWMENT FUNDS

CLAY COUNTY

Annunciation Church Educational Endowment Fund
Brazil City Fire Department Safety & Equipment Fund
Clay Youth Baseball League Fund
Clay Community Schools CAPE Fund
Clay County Community Foundation Operating Endowment Fund
Clay County Genealogical Society Fund
Clay County YMCA Endowment Fund
Posey Township Volunteer Fire Department Endowment Fund

SULLIVAN COUNTY

Community Kitchen Endowment Fund
Gill Township Volunteer Fireman's Operational Fund
Humane Society of Sullivan County Endowment Fund
Merom Conference Center Endowment Fund
Merom Improvement Association Fund
Merom United Methodist Church Endowment Fund
Our Father's Arms Charitable Fund
Southwest High Schools Alumni Association - Cooper Endowment Fund

Sullivan City Endowment Fund
 Sullivan County 4-H Endowment Fund
 Sullivan County Community Foundation Operating Endowment Fund
 Sullivan County Community Hospital Foundation Endowment Fund
 Sullivan County Public Library Endowment Fund
 Sullivan County Public Library Genealogy, Family & County History Endowment Fund
 Sullivan County Soil & Water Conservation Fund
 Sullivan Presbyterian Church Mission Fund
 Sycamore Trails RC&D SCCF Endowment Fund
 Turman Township Youth Foundation 2000 Limited Fund

VIGO COUNTY

14th & Chestnut Community Center Endowment Fund
 A.L.L. - Washington High School Nursery Endowment Fund
 ARC of Vigo County Endowment Fund
 Area 7 Agency on Aging & Disabled Endowment Fund
 Art Spaces Endowment Fund
 Boy Scouts of America, Crossroads of America Council Endowment Fund
 Catholic Charities Endowment Fund
 C.H.A.N.C.E.S. & Services for Youth Endowment Fund
 Clothes Closet Endowment Fund
 Community Theatre of Terre Haute Endowment Fund
 Crossroads of America Youth Orchestra Endowment Fund
 Davis Gardens Health Center Fund
 Dispute Resolution Center Endowment Fund
 Gibault Fund
 Girl Scouts of Central Indiana Fund
 Goodwill Industries Endowment Fund
 Katherine Hamilton Endowment Fund for Hamilton Center Inc.
 Happiness Bag Endowment Fund
 Hospice of the Wabash Valley Endowment Fund
 Humane Society Fund
 Ivy Tech Technology Endowment Fund
 League of Terre Haute Endowment Fund
 Light House Mission Endowment Fund
 Mental Health Association in Vigo County Endowment Fund
 David & Jerry Penman Mitchell Concertmaster Chair Fund
 Richard & JoAnne Rowe Educational Fund for Musical Arts
 Saint Ann Clinic Endowment Fund
 Saint Benedict Church Endowment Fund
 Saint Joseph University Parish Fund
 Spay-Neuter League Endowment Fund
 Sumar Fund for the Salvation Army

Sheldon Swope Art Museum Endowment Fund
 Sycamore Trails RC&D Endowment Fund
 Terre Haute Boys & Girls Club - Max Gibson Endowment Fund
 Terre Haute Boys & Girls Club - John G. Schmidt Capital Fund
 Terre Haute Catholic Charities Foodbank Endowment Fund
 Terre Haute Children's Science & Technology Museum Endowment Fund
 Terre Haute Parks Department Endowment Fund
 Terre Haute Symphony Association Fund
 Terre Haute Symphony Association - Walter & Margaret Reed Fund

***THSO Fund for the Future**

TREES, Inc. Endowment Fund
 United Cerebral Palsy Endowment Fund
 United Way of the Wabash Valley Endowment Fund
 United Way of the Wabash Valley - Ada Hodge Fund
 United Way of the Wabash Valley Operating Endowment Fund
 Vigo County Education Foundation Endowment Fund
 Vigo County Historical Society Endowment Fund
 Vigo County LifeLine Endowment Fund
 Vigo County Parks & Recreation Department Endowment Fund
 Vigo County Public Library Endowment Fund
 Visiting Nurse Association of the Wabash Valley, Inc. Endowment Fund
 Wabash Valley Community Foundation Board Operating Endowment Fund
 Wabash Valley Community Foundation Operating Endowment Fund
 Wabash Valley Youth for Christ & Urban Life Endowment Fund
 Western Indiana Community Action Agency Endowment Fund
 World Gospel Church Missions Endowment Fund



CLAY COUNTY

Roy W. Barnhart Scholarship Fund
 Denise D. & John C. Bell Scholarship Fund
 Blair Endowment Fund
 Brazil Business & Professional Women's Club Scholarship Fund
 Virginia M. Buell Scholarship Fund
 Clay County Alumni Scholarship Fund
 Clay County Scholarship Fund
***Deakins/Shattuck Scholarship Fund**
 Albert & Freda Eder DeCoursey Scholarship Fund
 Rob & Lisa Denker Scholarship Fund

Thomas H. & Mary G. Elmore Scholarship Fund
 Sam J. & Joyce E. Emmert Family Fund
 Halie's Rainbow-The Halie Hite Memorial Scholarship Fund
 Harry M. & Rosemary L. Grandey Scholarship Fund
 Harriet Hicks Scholarship Fund
 Earl F. Hopkins Scholarship Fund
 Mabel Kidwell Scholarship Fund
 Renis & Fern Knust Scholarship Fund
 Albert A. Landes Endowed Scholarship Fund
 Dr. Susan M. Latta, Ph.D. Memorial Scholarship Fund

***Lilly Endowment Alumni Scholarship Fund - Clay County**

Roy & Louie E. Lucas Scholarship Fund
 Steve & Linda Messmer Scholarship Fund
 Janice Hart Modesitt, R.N. Nursing Scholarship Fund
 Roll & Dora King Moore Scholarship Fund
 Rolene Moore Scholarship Fund
 Gary & Leesa Nesty Scholarship Fund
 Martha & Mary Ann Pedlar Scholarship Fund
 Max & Helen Pierce Scholarship Fund
 John & Myrtle Price Scholarship Fund
 Brent & Helen Rentschler Scholarship Fund
 Dan & Jane Robbins Northview Marching Knights Scholarship Fund
 Bob Romas Memorial Scholarship Fund
 Camden Scott Ramos Memorial Scholarship Fund
 SERCOLBE Scholarship Fund
 Dedia M. Sexton Scholarship Fund
 Dedia M. Sexton Scholarship Fund for the Indiana School for the Deaf
 Staunton High School Alumni Association Scholarship Fund
 Everett E. & Fern A. Tucker Scholarship Fund
 Dr. Robert K. Webster & Wanda Webster, R.N. Scholarship Fund

SULLIVAN COUNTY

J.P. Alexander Memorial Scholarship Fund
 Elizabeth A. Bledsoe Scholarship Fund
 Jim Case Scholarship Fund
 Janet Romine Chatfield Business Award
 Jeffrey Alan Cole Memorial Scholarship Fund
 Rebecca Crowder Cole Scholarship Fund
 Dr. James Harvey Crowder Memorial Scholarship Fund
 Farmersburg Alumni Association Scholarship Fund
 Sarah Geitz Scholarship Fund for the John & Eunice Organ Valedictorian Scholarship & the Rex E. Pierce Salutatorian Scholarship
 Evelyn W. Gettinger Indiana University Scholarship Fund
 John D. Gettinger Purdue Scholarship Fund

Chris Gilbert Memorial Scholarship Fund
 Gill Township Scholarship Fund
 David A. Gilman, Ph.D. Memorial Scholarship Fund
 Fred A. & Nannie O. Graham Scholarship Fund
 Charles W. Harbison Endowment Fund
 Bernard C. Hoilman Scholarship Fund
 Eleanor Jane Dixon Hoilman Scholarship Fund
 Leon D. & Nancy Shake Huff Scholarship Fund
 Leon D. & Nancy Shake Huff Sigma Kappa Scholarship Fund
 James F. Jackson Scholarship Fund
 Michael Ryan Keane Memorial Scholarship Fund
 Esther Ruddell Ladson Scholarship Fund
 Lilly Endowment Alumni Scholarship Fund - Sullivan County
 Albert & Verna McKee Memorial Scholarship Fund
 Diane K. Marheine Memorial Scholarship Fund
 Floyd & Irene Phillips Scholarship Fund

***Pigg Family Charitable Scholarship Fund for Ivy Tech Community College**

***Pigg Family Scholarship Fund**

Virginia "Pat" Pirtle Nursing Scholarship Fund
***Officer Rob Pitts Memorial Scholarship Fund**
 Raybestos Powertrain Machine Trades Scholarship Fund
 Jesse O. & Martha L. Reynolds Scholarship Fund
 Reid & Nina Ross Scholarship Fund
 Sherman Educational Fund
 Dercie E. (Hawkins) Simmons Educational Scholarship Fund
 Sara W. Springer Memorial Scholarship Fund
 Sullivan County Purdue Alumni Association Scholarship Fund
 Sullivan County Scholarship Fund
 Sullivan High School Automotive Scholarship Fund
 Sallie Unger Scholarship Fund
 Valentine Family Scholarship Fund
 Robert P. White Elks Charitable Fund

VIGO COUNTY

AdvantagePlus of Indiana Federal Credit Union Scholarship Fund
 Joe & Dorothy Archer Scholarship Fund
 Bentrup Family Scholarship for Mechanical Engineering Fund
 Bentrup Family Nursing Scholarship Fund
 Charles F. & Nancy A. Bradford Scholarship Fund
 Dr. Charlotte M. Boener Scholarship Fund
 Beta Sigma Phi City Council Scholarship Fund

Rex Buntain Tribune Star Scholarship Fund

Fred Christman Scholarship Fund

Rachael Dawn Clark Memorial Scholarship

Tina Clem Memorial Scholarship Fund

Dr. & Mrs. James O. Conklin Scholarship Fund

Betty E. & Curt DeBaun, Jr. Aviation Scholarship Fund

***Robert Denny Memorial Tennis Scholarship Fund**

Hazel A. Dennis, R.N., Nursing Scholarship Fund

Dr. William W. Drummy Memorial Scholarship Fund

William W. Drummy III, Rebecca A. Drummy, R.N., & Lillian A. Drummy, R.N., Nursing Scholarship Fund

Vigo County Education Foundation - Jennifer M. Dunham Memorial Scholarship Fund

Peter Anthony Duong Memorial Scholarship Fund

***Homer & Betty (Anderson) Easthom Memorial Scholarship Fund**

Lloyd & Lela Ewbank Scholarship Fund

Senator Herman J. Fanning, Jr. Memorial Scholarship Fund

William Fenton Scholarship Fund

Larry Paul Fleschner Scholarship Fund

Gay Floyd, R.N. Memorial Scholarship Fund

Jack Fox Memorial Scholarship Fund

Dr. John E. Freed, Jr. Memorial Scholarship Fund

Gerstmeyer Technical High School Scholarship Fund

Glenn High School Alumni Scholarship Fund

Lavelda M. Goble Scholarship Fund

Don & Mary Goltry Scholarship Fund

Sgt. Dale Russel Griffin Memorial Scholarship Fund

Catherine Elizabeth Grimes Memorial Scholarship Fund

Charles Carter Hedrick Memorial Scholarship Fund

Randy & Emily Herrington Community Service Award Scholarship

Alyssa Mechelle Hogue Memorial Scholarship Fund

***Holt-Jarvis Mental Health Scholarship Fund**

***Norman L. & Carol Rae Isbell Scholarship Fund**

Jo Ann F. Johnson Memorial Scholarship Fund

Josh Kackley Memorial Scholarship Fund

Vigo County Education Foundation - John Kassis Memorial Scholarship Fund

Carol M. Starkey Kochell Scholarship Fund

***Cheryl Sanders Konowitz Nursing Scholarship Fund**

***John K. & Helen Lemry Scholarship Fund**

Lilly Endowment Alumni Scholarship Fund - Vigo County

Harold Paul Loveall III Memorial Scholarship Fund

Jack Lower Memorial Scholarship Fund

Tom McCarthy Memorial Scholarship Fund

Avice McCrae Scholarship Fund

Laura Brooke McDonald Memorial Scholarship Fund

Nancy & Dale McKee Family Scholarship Fund

John & Carol Myers Scholarship Fund

Otter Creek Volunteer Fire Department Association, Station #1 Scholarship Fund

Leylahnd A. W. Owens Scholarship Fund

Liane R. Page Memorial Scholarship Fund

Garrett Pendergast Scholarship Fund

Garrett A. Pendergast & Stephanie M. Welsh Police & Fireman Scholarship Fund

Marilyn Wheeler Pendergast Foundation Funds for:

- Indiana State University Department of Marketing;
- Indiana University School of Law;
- Rose-Hulman Institute of Technology; and
- Saint Mary-of-the-Woods College

***Jenna Kay Perrelle Memorial Scholarship Fund**

Dr. John B. Pollock Dentistry Scholarship Fund

Dorothy Wurst Porter Scholarship Fund

Plumbers & Steamfitters Local 157 Scholarship Fund

Anonymous

***Ronald K. & Sherrill A. Rich Scholarship Fund**

Rachel Marie Romas Memorial Scholarship Fund

Ambrose & Miriam Rubey Scholarship Fund

Bob & Olive Sanders Family Scholarship Fund

Gene K. & Charlotte Taylor Shike Scholarship Fund

Vincent G. Sison, M.D. Memorial Nursing Scholarship Fund

Travis James Smith Memorial Fund

Robert P. & Carolyn G. Steinbaugh Scholarship Fund

Cameron Taylor Memorial Scholarship Fund

Terre Haute Junior Golf Association Scholarship Fund

Terre Haute Regional Hospital Foundation Fund

Terre Haute Regional Hospital Medical Staff Scholarship Fund

TH 2 ND

Andy & Edythe Turner Memorial Scholarship Fund

VFW Post 972 Voice of Democracy Scholarship Fund

Vigo County Scholarship Fund

Wabash Valley Community Foundation Scholarship Fund

Wabash Valley Mechanical Contractors Association Scholarship Fund

Erskine Lee & Eula Webb Scholarship Fund

Wiley High School Alumni Scholarship Fund

Myrl & Marie Wilkinson Scholarship Fund

Bill Wood Insurance Adjuster's Scholarship Fund

Wright, Shagley & Lowery Scholarship Fund

Thomas J. Wright Scholarship Fund

Kimberley Jeanne Fowler Wulf Scholarship Fund for Catholic Education

YWCA of Terre Haute Scholarship Fund

SPECIAL PROJECT & NONPERMANENT FUNDS

SULLIVAN COUNTY

Sullivan Central Plaza Project Fund

VIGO COUNTY

Bruce Anshutz - Chad Smith Memorial Plaza Fund

Art Spaces Preservation Fund

Birthplace of the Coca-Cola Bottle Committee Community Project Fund

Duke Energy Grants Fund

The Essence of Red Committee Fund

***Garfield High School Purple Eagle Plaza Community Project Fund**

Holiday Wish List

Janet S. Newman Helping Hand Fund

Scottish Rite of Wabash Valley Capital Project Fund

Terre Haute Parks Department Project Fund

Terre Haute Parks Department Project Fund - Brittlebank Pickleball Court Project

Terre Haute Parks Department Project Fund - Deming Park

Terre Haute Parks Department Project

Fund - Dobbs Park

Terre Haute Parks Department Project Fund - Gold Medal Plaza

Terre Haute Parks Department Project Fund - Hulman Links

Terre Haute Parks Department Project Fund - Maple Ave.

Terre Haute Parks Department Project Fund - Statue Vandalism

Terre Haute Parks Department Project Fund - Voorhees Skate Park

***Town of Riley Community Center Project Fund**

Veterans Memorial Plaza Project Fund

Vigo County Parks & Recreation Department Projects Fund

***Vigo County YMCA Pool Fund**

Wabash Valley Gives - Community Engagement Platform

***West Terre Haute Clinic Community Project Fund**



FINANCIAL

ASSETS	2019	2018
Cash	\$ 145,106	\$ 22,305
Investments	61,478,422	56,907,898
Other Assets	1,005	1,000
Cash Surrender Value of Life Insurance	105,230	102,529
Property and Equipment		
Building	905,319	905,319
Furniture and Equipment	247,894	194,772
	<u>1,153,213</u>	<u>1,100,091</u>
Less: Accumulated Depreciation	(263,315)	(192,063)
	<u>916,898</u>	<u>908,028</u>
Land	59,000	59,000
	<u>975,898</u>	<u>967,028</u>
TOTAL ASSETS	\$ 62,705,661	\$ 58,000,760

LIABILITIES & NET ASSETS		
Agency Endowments	\$ 3,449,009	\$ 3,447,343
Scholarships and Grants Payable	1,082,292	1,263,057
Deferred Revenue	515,987	-
Mortgage Payable	509,405	525,063
Annuity Liability	28,418	30,243
TOTAL LIABILITIES	5,585,111	5,265,706
Net Assets		
Without Donor Restrictions	54,067,286	49,604,898
With Donor Restrictions	3,053,264	3,130,156
Total Net Assets	<u>57,120,550</u>	<u>52,735,054</u>
TOTAL LIABILITIES AND NET ASSETS	\$ 62,705,661	\$ 58,000,760

TOTAL ASSETS
\$62,705,661



	UNRESTRICTED	TEMPORARY RESTRICTED	TOTAL
Public Support:			
TOTAL AMOUNTS RAISED	\$ 6,807,889	\$ 1,825	\$ 6,809,714
Less: Amounts Received as Agency Endowments	(105,936)	-	(105,936)
TOTAL CONTRIBUTIONS	6,701,953	1,825	6,703,778
Seminar Fees	2,400	-	2,400
Special Events, Net of Expenses	25,757	-	25,757
Other Fees	28,939	-	28,939
TOTAL PUBLIC SUPPORT	6,759,049	1,825	6,760,874
Revenues and Gains:			
Investment Income-Net of Custodial and Management Fees	199,329	(43,433)	155,896
Excess Management Fees from Agency Endowments	32,675	-	32,657
Net Assets Released from Restrictions:			
Satisfaction of Donor Restrictions	35,284	(35,284)	-
TOTAL REVENUES AND GAINS	267,270	(78,717)	188,553
TOTAL PUBLIC SUPPORT AND REVENUE & GAINS	7,026,319	(76,892)	6,949,427
Expenses:			
Program Services	1,972,546	-	1,972,546
Management & General	371,918	-	371,918
Fundraising	219,467	-	219,467
TOTAL EXPENSES	2,563,931	-	2,563,931
Change in Net Assets	4,462,388	(76,892)	4,385,496
Net Assets at Beginning of Year	49,604,898	3,130,156	52,735,054
Net Assets at End of Year	\$ 54,067,286	\$ 3,053,264	\$ 57,120,550

BOARD



Wabash Valley Community Foundation Board

Nancy Rogers, President	Andy Hendricks
Sally Zuel, Vice President	Mike McCullough
David Doti, Treasurer	Jean McMahan
Cindy Cox, Secretary	Becky Miller
Bob Brown	Santhana Naidu
Jim Conner	Chirag Patel
Brian Deakins	Dee Reed
Jo Einsteadig	Jon Scherle
Judy Harris	Gary Ulrich

Clay County Community Foundation Board

Larry Tempel, President	Martha Knox
Michael McCullough, Vice President	Anna Long
Jim Tribble, Secretary	Summer Long
Daryl Andrews	Vickie Mace
Henry Buell	Jerry Morgan
Brian Deakins	Fred Nevils
Jon Hendrich	Meghan Shidler



Sullivan County Community Foundation Board

Judy Harris, President	Tara Jenkins
Jean McMahan, Vice President	Janice Knotts
Patti Mayfield, Secretary	Bruce Marheine
Jim Conner	Malinda Medsker
Cynthia Cox	Susan Norris
Tim Garrett	Ally Orwig
Sarah Hannon	Neil Smith
Amber Hunt	Kay Weitekamp



COMMITTEES

DISTRIBUTION COMMITTEE

Sally Zuel, *Chair*
Jackie Lower
Rondrell Moore
Santhana Naidu
Chirag Patel
Dave Piker
Nancy Rogers
Katherine Utley

INVESTMENT COMMITTEE

Andy Hendricks, *Chair*
Bob Brown
Jim Conner
David Doti
Ward Hubbard
Brian Kooistra
Summer Long
Nancy Rogers
Earl Elliott, Sackrider & Company,
Consultant
James Ross, Mason Investment
Advisory Services, *Consultant*

GOVERNANCE & PLANNING COMMITTEE

Sally Zuel, *Chair*
Curt Brighton
Bob Brown
Jo Einsteadig
Mike McCullough
Nancy Rogers
Jon Scherle

MARKETING COMMITTEE

Dee Reed, *Chair*
Becky Miller
Santhana Naidu
David Piker

SCHOLARSHIP COMMITTEE - CLAY COUNTY

Martha Knox, *Chair*
Darenda Dyer
Jerry Morgan

SCHOLARSHIP COMMITTEE - SULLIVAN COUNTY

Jim Conner, *Chair*
Cynthia Cox
Neil Smith

SCHOLARSHIP COMMITTEE - VIGO COUNTY

Cindy Cox, *Chair*
Jared Farnsworth
Kim Ingalsbe

SPRING OUTING COMMITTEE

Richard Shagley, *Chair*
Julie Baesler
David Doti
Brian Dyer
Mike McCullough
Sandy Reece
Nancy Rogers
Rick Shagley

TERRE HAUTE DAY NURSERY COMMITTEE

Mary McLaughlin, *Chair*
Cindy Abel
Buddy Berry
Nancy Brentlinger
Jan Cutter
Jo Einsteadig
Susie Kersey
Jackie Lower
Tina Maher
Kathy Miller
Mary Lou Skinner
Joan Zaun

YOUTH GRANT COMMITTEE

Sydney Dunkin, *Chair*
Avery Cunningham
Carmen Dean
Kathryn Gauer
Matthew Hackett
Chloee Hurst
Samantha Hyde

Baylee Jackson
Krista Kane
Jackson Kensell
Ethan Kirsch
Quincey Klingerman
Dylan Lemon
Logan Lemon
Addie Moeller
Megan Pendergast
Bryce Statler
Zoe Trausch
Sarah Henman, *Volunteer Advisor*
Katelynn Liebermann,
Volunteer Advisor

GIVING CIRCLE STEERING COMMITTEES

100+ WOMEN WHO CARE VIGO COUNTY

PJ Whitney Aubin
Julie Baesler
Barbara Brugnoaux
Cindy Cox
Martha Crossen
Holden Davis
Tina Elliott
Teresa Exline
Brianna Gassert
Margot Gillespie
Kim LaGrange
Jackie Lower
Linda Lutz
Cindy Martin
Katelynn Moats
Jane Morse
Susan Powers
Eileen Prose
Sally Stewart
Beth Tevlin

100 WOMEN WHO CARE CLAY COUNTY

Mica Bonomo
Kim Emmert O'Dell

Michelle Engle
Susan French
Jennifer Jones
Leesa Nesty
Pat Redenbarger
Cara Ross
Renee Stewart
Sherri Turner
Cindy Watts
Roberta Weliever

100 WOMEN WHO CARE SULLIVAN COUNTY

Sue Chagnon
Kaylan DuPre
Kim Figg
Suzanne Gorgas
Patti Mayfield
Patty Morgan
Ally Orwig
Jen Petty
Michele Smith
Liz Trimble
Ellen Tucker

GUYS WHO GIVE CLAY COUNTY

Brian Deakins
John Moore
Chris Rodgers

GUYS WHO GIVE VIGO COUNTY

Cary Albin
Mike Eldred
Kent Harris
Will Hine
Randy Hutts
Dave Lotter
Tom Newlin
Al Perone
Curt Wilkinson

STAFF

STAFF

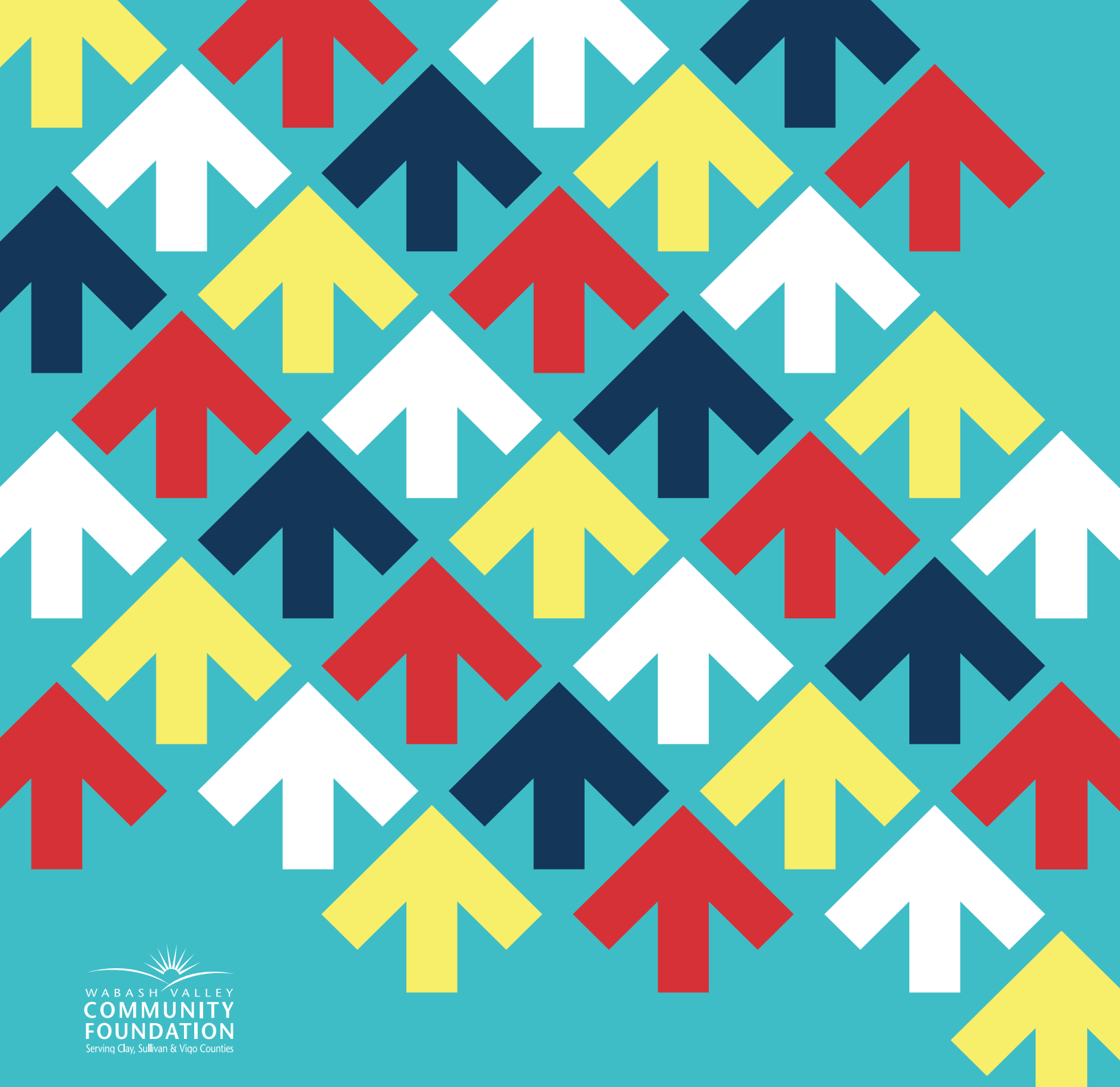
Beth Tevlin, *Executive Director*
Alaina Burton, *Marketing and Communications Associate*
Ruth Hallam, *Administrative Assistant*

Randy Hutts, *Director of Finance*
Kelli Miller, *Program Director*
Lisa Moseley, *Program Associate*
Emily Murray, *Affiliate Relations Coordinator*

INTERNS

Sami Ginoplos
Samantha Hyde
Nicole Nunez
Samantha Payne
Logan Steward
Braelyn Wence





200 SOUTH 8TH STREET | TERRE HAUTE, IN 47807 | WVCF.ORG | 812.232.2234

This annual report covers the Wabash Valley Community Foundation's 2019 Fiscal Year. October 1, 2018 - September 30, 2019.

If you have any questions or would like to discuss your gift plans, please contact us at 812.232.2234, toll free 877.232.2230, or via email at info@wvcf.org.

